



THE LANTERN

Irene Conole

1937



1942



THE FACULTY AND
SENIOR CLASS OF
NAZARETH ACADEMY
OF ROCHESTER, NEW
YORK PRESENT THE
THIRTIETH VOLUME OF

* *
*

T H E

* * *
* * *

J U N E I 9 4 2

* *



ALL CATHOLIC HONORS, 1936, 1938, 1939
FIRST HONORS, 1937, 1940, 1941

EDITOR - IN - CHIEF
JANE E. MULLIGAN
ASSISTANT EDITOR
RUTH M. FARRELL
BUSINESS EDITORS
MARY ESTHER DANEHY
MARY H. RUSSELL



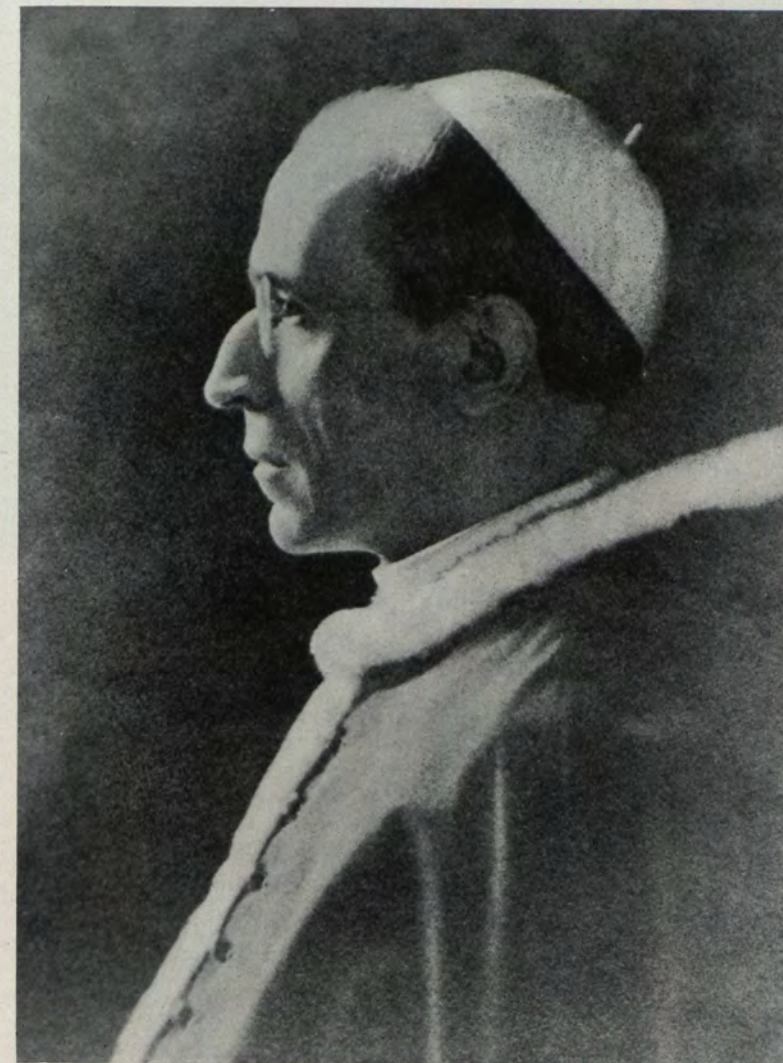
THE MOST REVEREND JAMES E. KEARNEY, D.D.
Bishop of Rochester



*In our hearts thy name, dear Nazareth,
E'er shall glow with holy light.*



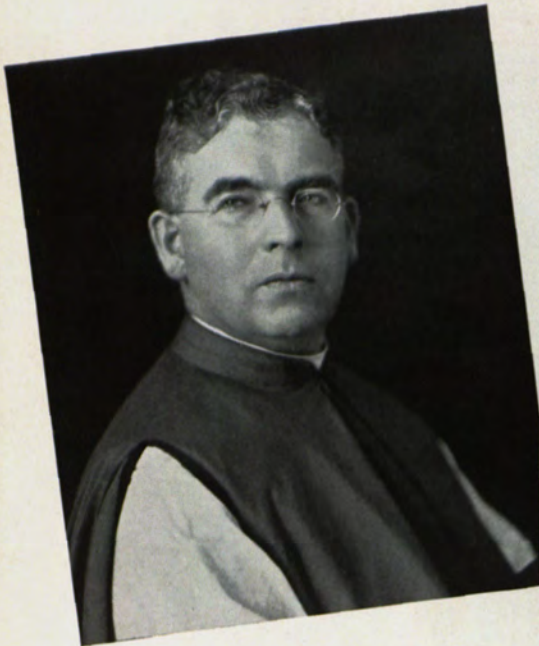
Nazareth



HIS HOLINESS, PIUS XII

YOUR HOLINESS:

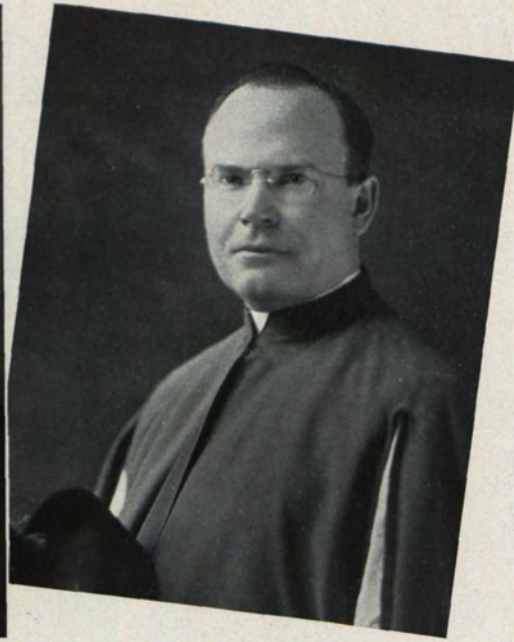
From your children at Nazareth, Rochester, wing loyal, filial greetings and prayerful felicitations to the Eternal City on the completion of silver years in the Episcopacy.



THE RIGHT REVEREND WILLIAM M. HART
Vicar-General



THE MOST REVEREND JAMES E. KEARNEY, D.D.
Our Bishop

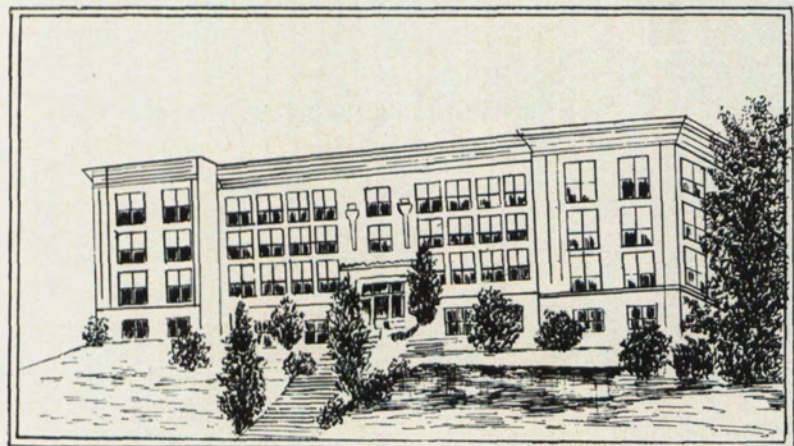


THE MOST REVEREND WILLIAM F. BERGAN
Chancellor



OUR DIOCESAN CURIA

*Guardians of
The Treasured Traditions of Nazareth*



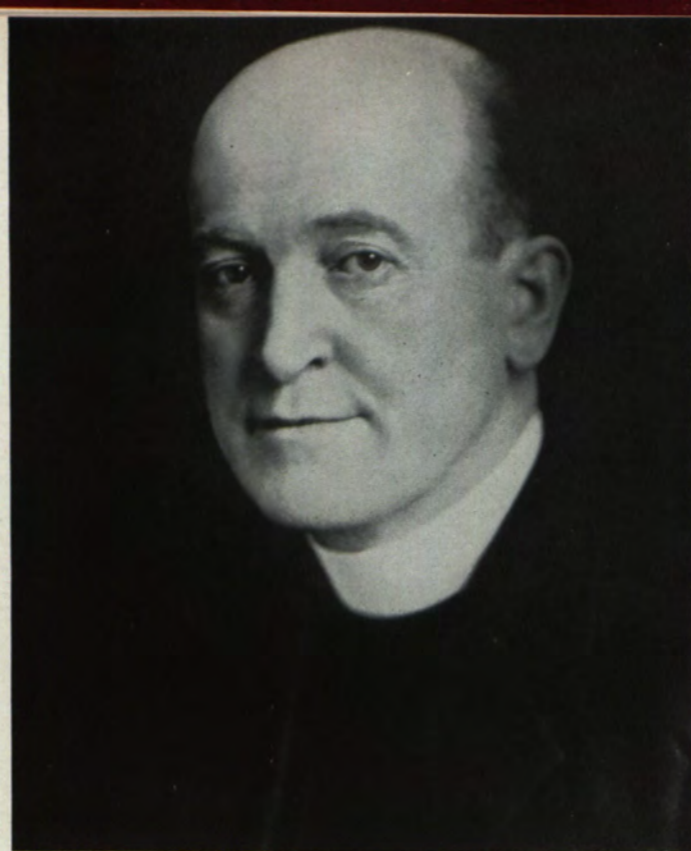
Superintendent of Catholic Education,
THE REVEREND JOHN DUFFY



Assistant Superintendent,
THE REVEREND CHARLES MAHONEY



THE REVEREND DANIEL O'ROURKE
Our First Year Religious Instructor
 Holy memories.



THE REVEREND MAYNARD CONNELL, Ph.D.
First Friday Chaplain

Doer of Countless Kind Deeds in behalf of Faculty,
 Student Body and Alumnae Association.



THE REVEREND JOSEPH O'CONNELL
Chaplain of Academy Convent
Teacher of Apologetics, 4
Religious Instructor 2, 3, 4
 Words cannot express our gratitude.

*God Bless you always, Irene,
 Father O'Connell,*

SISTER M. CLARISSA
Superior—Academy Convent;
Speech, Dramatics

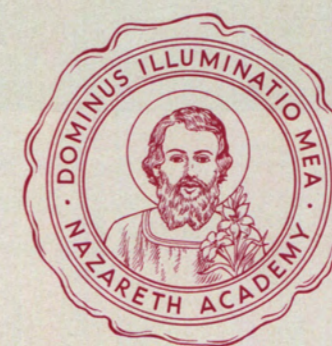


SISTER M. BEATRICE
Treasurer



SISTER M. HUBERTINE
Principal

Sister M. Hubertine





OUR BISHOP



DEDICATION

1937—1942

Dear Bishop Kearney

*You are rounding out your fifth year as Bishop of the
Diocese of Rochester*

In this short span

You have taught us the true purpose of life

*You have taught us to fondly cherish the sweet name,
Nazareth*

*You have stood at God's altar and begged Him at
Holy Mass to bless each school year with success*

*You have cheered our school life by your visits, your
words of counsel and encouragement*

*You have won for us days of recreation which you
alone could win*

For all that you have meant in our school days at Nazareth

*The Faculty and Class of 1942 of Nazareth Academy
dedicate to you this volume of *The Lanthorn* in token of
their devotion and gratitude.*



Graduates



SENIOR CLASS OFFICERS—*left to right:*

HELEN RAUBER, *Treasurer*
MARGARET LEWIS, *Vice-President*
HELEN MARY BAUMAN, *President*
BETTY RYAN, *Secretary*

SENIOR HOME ROOM PREFECTS

201—MARY RONAN
205—LOTTIE BOJARA
206—CATHERINE FOLEY
207—WILNA BEEMAN
208—ADELAIDE MIDNIGHT
210—ANN MCHENRY



Nazareth Academy

MARY ACKROYD

Quiet, intent, intelligent . . . graciously obliging . . . possessor of sympathetic nature . . . undercurrent of subtle humor and warming cheer.



CATHERINE AIELLO

Humorous, gay, poised . . . silver-toned . . . bearer of joy . . . decidedly witty . . . popular.



BERYL ANDRUS

Full of merriment . . . cue for humor . . . heart of gold . . . queen of kind words . . . studious and charming.



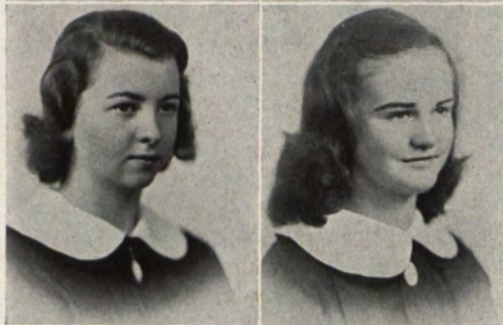
FLORENCE AUER

Petite . . . cheerful smile . . . frills and fancies . . . non-conformity . . . sparkling vitality . . . hidden talents.



MARY AULENBACHER

Elegant manner . . . peaking dimples . . . all kinds of intelligence . . . no day complete without her.



MARY LOUISE BARBATI

Small in stature . . . most delightful . . . pleasantry in manner . . . charming companion . . . lovely personality with everything that is nice.



JEANNE BARKER

Merry heart and true . . . nonchalant air . . . cooperative and capable . . . outstanding leadership . . . integrity—her signature.

ANNAMAY BARROW

Demure . . . helping hands . . . few rivals in gentleness . . . tranquil atmosphere . . . lady-like ever.

ARLENE BASCH

Beauty of voice and spirit . . . true friend . . . charming personality . . . scholarly . . . competent embodiment of cheer.

DIANA BATTAGLIA

Always good-natured . . . unworried . . . unburied . . . universal friend . . . deeply appreciative . . . worker in any project.

HELEN MARY BAUMAN

Laughing loveliness . . . lively and persuasive . . . abundance of school spirit . . . accepts any challenge . . . lo! our class President.

AUDREY BAUMANN

Mirthful light in beaming eyes . . . possessor of all the virtues attendant upon the good . . . strong mind . . . stronger heart.

WILNA BEEMAN

Thoughtful of others . . . disposition sweet as honey . . . conscientious worker . . . lady-like from head to toe.

BERNICE BEIRSCHMITT

Friendly words to everyone . . . hearty laughter . . . refreshing personality . . . able, willing, ready for fun.

JOSEPHINE BELLANCO

Tall and sprightly . . . deep dark eyes . . . doer of deeds . . . sincerity personified . . . high spirited.

PAULETTE BIELLE

Petite and demure . . . sweet shyness enshrouding true friendliness . . . smiling eyes revealing joy of soul.

RITA BIRECREE

Easy humor . . . shining countenance . . . endowed with ambition . . . pursuer of knowledge.

CLARE BLOCK

Bright blue eyes . . . hair like wheat glinting in the sun . . . earnest worker . . . true friend.

LILY MAY BLUM

Smiling countenance . . . success crowning her every effort . . . thoughtful . . . friendly . . . sincere.

LOTTIE BOJARA

Soft voiced . . . even disposition . . . cherubic sweetness . . . generous . . . unselfish.

HELEN BOPP

Laughter heralding her approach . . . excitement shining in her eyes . . . never sad or gloomy.

SALLY BRASSER

Mellow voiced . . . ever a worker . . . sunshine following her footsteps . . . mildly persuasive.

CHARLOTTE BROWN

Laughing eyes . . . enchanting voice . . . fun-loving . . . always a lady . . . leisurely walking through life in quest of beauty.

DOROTHY BURKARD

Animated mite . . . coaxing laughter . . . magnetic personality . . . sweet voiced . . . smiling eyes.

Nazareth Academy

WILMA BURKE

Gay, clever, vivacious . . . humor personified . . . capacity for enjoying life . . . helping others to its enjoyment.



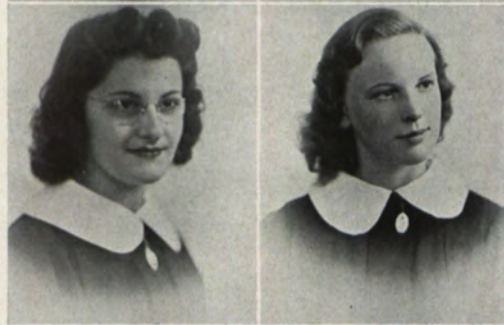
JESSIE ANN BUTLER

Capful of sparkling enthusiasm . . . neat, efficient . . . manner that pleases . . . apt student with persuasive personality.



LENA ZIMARINO

Genial disposition . . . cherry smile . . . light-hearted, studious . . . courteous . . . gentle, unassuming . . . exponent of good will.



PHYLLIS CAMPANELLA

Dark eyes burning with friendship's undying embers . . . cheerful outlook on life . . . consistently conscientious.



JEAN CANNAN

Merry laughter . . . gay, generous hearted . . . loyal, cooperative . . . athletic type . . . cherished by all who know her.



CLARA CAPOBIANCO

Jolly smile . . . cheerful disposition . . . personality plus . . . generosity . . . courage . . . heart of kindness, gladness.



MARY ELIZABETH CARCELLI

Earnest, successful seeker after friendship . . . poise . . . sincerity . . . ingenuity . . . spirit of true enthusiasm.



LORRAINE CASEY

Loyalty, friendliness—her watchwords . . . gentle, cooperative, poised . . . tiny figure everyone enjoys knowing.



LUCILLE CASPER

Twinkling eyes . . . voice a gay melody . . . pretty manners . . . true meaning of friendship dwelling in her smile.



DORIS CHRISTIE

Amiable, optimistic . . . lover of sports . . . always ready to lend a helping hand . . . accomplished, energetic . . . irresistibly cheery.



MARGARET CHRISTMAN

Pretty, courteous, gentle . . . "linnet in her throat" . . . poetry in her heart . . . filled with the spirit of jollity.



VIRGINIA COLBURN

Shy, quiet, serene . . . helpful, reliable . . . most courteous . . . always pleasant . . . bringing merriment along wherever she goes.



DORETTE COLLINS

Tiny yet mighty . . . spirited . . . studious . . . painstaking, capable . . . lovely personality . . . outstanding lady.



MADELINE COOK

Tall and willowy . . . raven hair . . . basketball—her forte . . . nonchalant . . . easy-going . . . accurately alive and alert.



MARY JANE CORCORAN

Powder-blue eyes . . . perpetual unruffled temper . . . happy nature . . . always busy . . . conscientious . . . clever.



FLORENCE CORNELIUS

Small and slight . . . piquant charm . . . cheerful and easy manner . . . true student . . . tranquil companion.



MARY ANN CROWLEY

Pixie face . . . full of pep and vim . . . never idle . . . never blue . . . preciseness and punctuality personified.



VICTORIA D'ALESSANDRO

Calm and cheery . . . alert but quiet . . . good student . . . mild manner . . . multum in parvo.



MARY ESTHER DANEHY

Intriguing natural curls . . . vivacious personality . . . intelligent . . . angelic voice . . . full of laughs and helps.



ELEANOR DEL VECCHIO

Tiny face . . . wondering eyes . . . accomplishes big tasks . . . sincere . . . lovable lady.



ELIZABETH DEL VECCHIO

Good natured . . . reserved . . . ready . . . willing . . . responsible . . . generous . . . courteous.



MARY DENNIS

Quiet . . . friendly . . . carefree . . . warm smile . . . admirably sensible . . . cheery . . . enthusiastic student.



ALBERTA DE RITIS

Cameo complexion . . . blue black hair . . . shining eyes . . . sparkling personality . . . brilliant student.



MARGARET DEVERELL

Efficient . . . refined . . . dutious . . . quiet . . . model sodality officer . . . generous . . . enjoying life.



Nazareth Academy

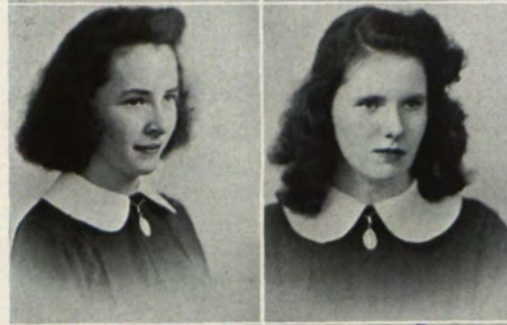
CATHERINE DIETRICH

Soft-voiced . . . twinkling eyes . . . unlimited sprightliness . . . courteous bearing . . . welcome personality.



HELEN DODD

Reserved . . . industrious . . . willing . . . ambitious worker . . . adroit scholar . . . hidden sense of humor . . . extremely thoughtful of others.



CATHERINE DONOVAN

Winning way and spontaneous repertoire . . . active and obliging . . . constant source of gaiety.



MARJORIE DONOVAN

Petite . . . earnest . . . active . . . cooperative . . . countenance expressing sweetness . . . host of friends . . . felicitous and jocular in conversation.



ANN DORAN

A smile and a cheery word for all . . . mild and sweet tempered . . . refreshingly harmonious . . . efforts wisely directed.



MARY DORAN

Bewitching red hair . . . impartial dispenser of fun and animation . . . persevering and energetic . . . her presence its own reward.



MARIAN DORKEY

Curly hair . . . cheerful disposition . . . manner quiet . . . jolly . . . truly lovable friend.

RITA DOWLING

Golden hair . . . misleading sign of harmonious disposition . . . distributor of sunshine even to the chance passer-by.

MARY DUGNAN

Paragon of patience . . . amicable and gentle . . . lover of beauty . . . intellectual . . . a kind word for all.

DOROTHY EIFFERT

Consistently pleasant . . . lively and exuberant . . . friendly and sincere . . . appreciates humor . . . cheerful and helping.

JEAN ENGLERT

Witty as the day is long . . . sportive . . . sincere . . . gay . . . happy . . . sunshine in dull moments.

AGNES ERBLAND

Ebon hair . . . blushing beauty . . . delightful candor . . . quietly going far . . . active and earnest.

ALICE ERBLAND

Twin to Agnes . . . dark curly hair . . . sweetness and freshness . . . friendliness . . . peaceful and calm . . . delightfully candid.

RUTH FALLIS

Heart of gold . . . voice of silver . . . dear to all her classmates . . . cheerful under every disappointment.

RUTH FARRELL

Disposition as bright as her hair . . . our recognized genius . . . personified goodness and energy . . . ready to help anyone.

THELMA FEENEY

Tiny . . . blush as red as hair is light . . . pleasant ways . . . peaceful paths . . . countless friends.

ANN FERKANIN

Delightful and faithful . . . likes everyone . . . is liked by everyone . . . enjoys dancing . . . cherished classmate.

PAULINE FILIPPONE

Enlivening air . . . carving every spoken word . . . master of the science of listening . . . admired by all.

ROSEMARY FINCH

Slight but so well liked . . . capable . . . enthusiastic . . . free from every care . . . a laugh and all laugh with her.

DORIS ANNE FLAHERTY

Blue eyes . . . hair of jet . . . fine musician . . . pleantry her style . . . skilled in every art . . . shining light.

MARY FLAHERTY

Bright eyes . . . special sense of humor . . . everyone's friend . . . neatness—her watchword . . . sympathy and gentleness—her companions.

EDNA FLEMING

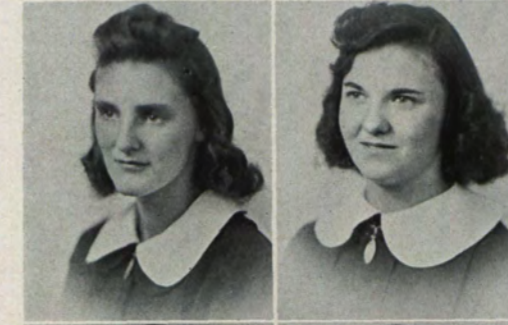
Small . . . loving and lovable . . . charming manner . . . personality plus . . . softness that matches her eyes of brown.

ANN FOLEY

Most agreeable companion . . . combination of common sense and winning ways . . . perfect as a pearl . . . knows no ill.

CATHERINE FOLEY

Conscientiously curled dark hair . . . unflinching finder of the silver lining . . . radiating personality . . . all-round good sport . . . cheered by us all.



Nazareth Academy

ROSEANNE FORWARD

Winning manner . . . calm . . . friendly . . . loyal classmate . . . intelligent . . . well-balanced . . . unquestionably a go-getter.

MARY LOUISE FRANK

Self-reliant . . . complaisant . . . outdoor girl . . . abounding in good will . . . interesting . . . interested.

ADELE FUCHS

Infectious smile . . . happy disposition . . . witty . . . comforting . . . true . . . cheerful.

JANE GAFFNEY

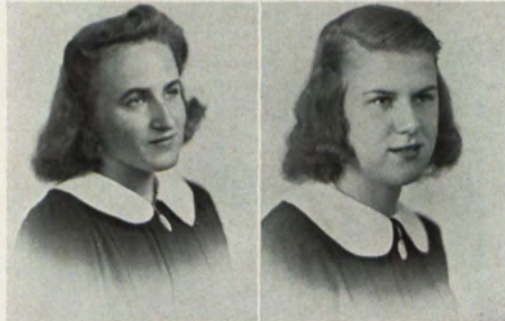
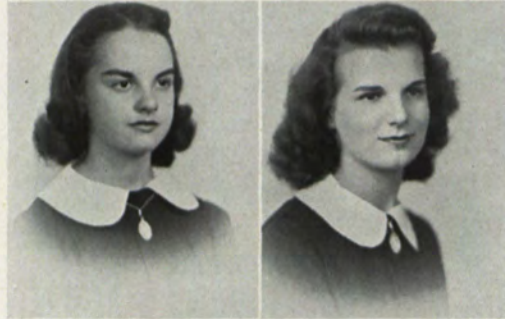
Benevolent . . . gay . . . heart conqueror . . . quiet . . . refined . . . persevering in difficulties.

RITA GANTERT

Twinkling eyes . . . graceful . . . serene . . . obliging . . . efficient . . . mirthful.

EDNA GESSNER

Gentle mannered . . . lily in our midst . . . serene . . . helpful . . . charming.



DORIS GIEBEL

Pleasant . . . quiet . . . willing . . . eager . . . talented . . . artist . . . appetite for real enjoyment.

ELEANOR GOSNELL

Carefree . . . fine sense of humor delightful . . . believer in golden silence.

JEANNE GRANGER

Delightfully kind . . . quiet . . . cooperative . . . quick smile . . . honest in her endeavors.

NORINE GRUE

Irresistible friendliness . . . tactful . . . light-hearted . . . gleam of sunshine . . . undaunted.

CORRINE HAERING

Jolly air . . . carefree . . . ardent . . . benignant . . . joyful in living.

JANE HANNA

Petite . . . twinkling eyes . . . sympathetic . . . understanding . . . fun loving . . . dear friend.

MARION HART

Personality radiating loveliness . . . heart warmed by friendship . . . capable . . . ambitious . . . indomitable . . . persuasive.

FRANCES HAYES

Smile that wins . . . words that only increase friendliness . . . voice that conquers . . . efficient . . . delightful . . . definitely witty.

FRANCES HEARNS

Ever amiable . . . sincere . . . studious . . . forbearance sowing gentility . . . baven in any turmoil.

KATHERINE HEFFERNAN

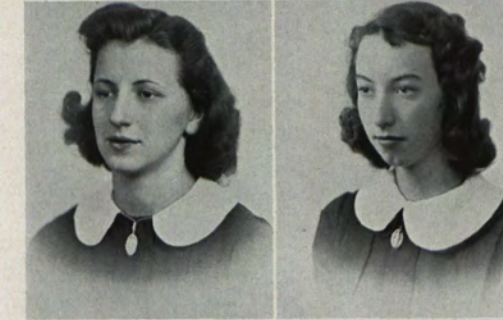
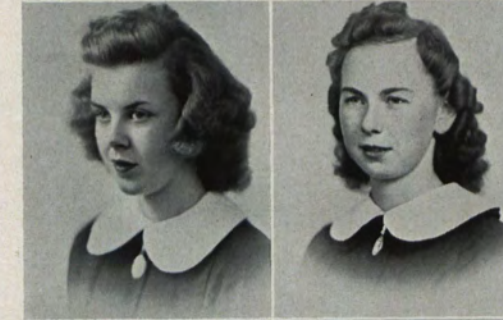
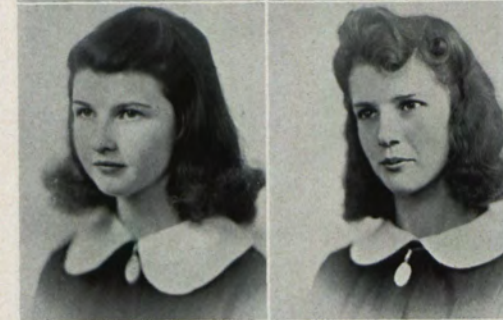
Sparkle of whimsical remarks . . . benevolent in her thought of others . . . truly outstanding . . . sympathetic . . . alert.

ELIZABETH HEISINGER

Winning charm . . . quiet persuasiveness . . . ability . . . unusual salesmanship . . . enshrouded in loyalty . . . goodness.

JEAN HENNESSY

Prize picture . . . happy-go-lucky . . . air mingled with seriousness . . . lover and maker of good times.



MARION HIGGINS

Soft-toned qualities . . . ever earnest . . . observing . . . unaffected . . . all the world held captive in her friendship.

RITA HILL

Lively brown eyes . . . cheerful . . . naturally kind . . . unassuming . . . generous to a fault . . . distinguished . . . popular.

KATHERINE HOGAN

Cameo loveliness . . . poised graciousness . . . gentle manners . . . wondrous charm . . . delight to all who know her.

MARJORIE HOFMANN

Well-balanced . . . jovial . . . never lost for words . . . good sport . . . eagerness—her stand-by.

FLORA HOSENFELD

Unusual bundle of energy . . . enthusiastic . . . ambitious . . . witty . . . more than welcome friend . . . bestower of pleasurable hours.

DOLORES HUETHER

Serious application to duty . . . gracious and pleasant manner . . . mildness personified . . . tranquility enwraps her.

Nazareth Academy

ROSEMARY HUNT

Quiet charm . . . glowing smile . . . gay nonchalance . . . quick sympathy . . . ambitiously content . . . portrait of a friend.



JEAN JACKSON

Smiling countenance . . . blond curly hair . . . undying wit . . . blithe heart . . . rollicking, frolicking fun . . . cheery and lively always.



MARY IRENE JOHNSON

Stately charm accompanied by gracious gladness . . . dramatic style . . . calm, cool . . . clever, care-free . . . a cooperative, willing helper.



JEANNE JOST

A mixture of true enthusiasm and healthful vigor . . . charm of sincerity . . . heart warmed with friendship . . . portrait of a lady.



LORRAINE KEADY

A little shy . . . very mild . . . model student . . . Our Lady's child . . . faith, hope, charity an hundred fold.



MARY KEENAN

Gay . . . talkative . . . bright, sunny disposition . . . indomitable energy . . . capacity for friendship . . . ability to win hearts.



MARY KEENAN

Laughing eyes . . . easy humor . . . stout heart . . . streak of kindness . . . sweet colleen . . . illustration of a friend.

ELEANOR KERN

"Light weight" of the senior class . . . vitality . . . great desire for knowledge . . . kind wand extended to all . . . true enthusiasm.

RITA KESTER

Firm and true . . . willingness together with ability to serve . . . subtle charm . . . heart abounding with sunshine . . . sympathetic friendship.

HELEN KLEM

Illuminating irresistibility . . . impetuosity . . . guardian of joy . . . essence of efficiency . . . friendly way of friendliness . . . pleasantry all her own.

GERALDINE KNAPP

Dark brown eyes . . . sparkling . . . twinkling . . . mischief without malice . . . vim, vigor, vitality . . . enthusiastic individualism . . . ever happy disposition.

KATHLEEN KOHLMAN

Gentle mirth . . . restless charm of sincerity . . . stalwart steadiness . . . voice of an angel . . . exemplary student . . . everybody's friend.

MARION KRAFT

Charm that captures our hearts . . . dimples that chase around a sunny smile . . . soft-voiced . . . earnest and bounteous.

JOSEPHINE LACAGNINA

Never lacking in conversation . . . tiny yet vivacious . . . carefree and fun-loving . . . her lively personality brightening many an hour.

BETTY LANDRY

A countenance of happiness . . . intelligent and submissive . . . fun-loving and jocular . . . seldom idle . . . an asset to any project.

MARY ANN LANE

Gay and happy . . . one of Virgil's enthusiasts . . . a whiz at history . . . a true friend and always the true "Nazareth Girl."

MARY LANZALACO

As generous as her eyes are smiling . . . ambitious . . . enthusiastic . . . an intelligent user of time and of ability.

PATRICIA LARAGY

Charming, gay and debonair . . . thoughtful of others . . . willingness embodies her actions . . . ever cheering those she meets.

LOIS LEGG

Ready, willing and able to cheer drooping spirits . . . sympathetic and fun-loving . . . an enthusiastic friend . . . unaffected and true.

MARY LEONE

Quiet humor in her large brown eyes . . . sweetness combined with a bit of shyness . . . loyalty . . . winning ways.

MARGARET LEWIS

Laughing eyes . . . full of fun . . . "spark plug" of our class . . . jolly and unaffected . . . energetic and impromptu.

ARLENE LINK

Quiet in a friendly way . . . a sense of humor that chases pessimism . . . a silver toned speaking voice . . . patient in perseverance.

RITA MARIE LOCKWOOD

A dimpled doll . . . captivating characteristics . . . ever considerate of other's wishes . . . in constant conquest of new books.

JOAN LOEWENGUTH

Mild and sweet-tempered . . . tranquil is the air about her . . . kindness flavors her words and actions . . . sensibility and intelligence.

MARY LOMBARDO

Dark eyes of shiny luster . . . ever happy . . . entertaining, intelligent conversationalist . . . willing worker . . . true scholar and maiden.



MICHAELA LOMEDICO

Graceful, flowing, ebony locks . . . spritely fairy ever gay . . . sweet condescension . . . bright, cheery atmosphere lingers with her.



KATHERINE LOWER

Tiny . . . trim . . . gay as spring . . . cosmopolite humorist . . . all-round "lady of Nazareth."



MARJORIE LYNCH

Fair-haired complacency neath universal smile . . . aspirant to greater heights . . . understanding nature . . . faithful friend.



SHIRLEY MALLET

Interesting, pleasant conversationalist . . . easy to get along with . . . benevolent . . . vivacious . . . star in basketball and in life.



MARGARET MARY MALOY

Golden hair . . . rollicking good humor . . . magnetic personality wrapped in charm . . . enlivening . . . entertaining.



BETTY MARCHNER

Seen rather than heard . . . bright-eyed . . . friendly . . . charitable . . . cheerful . . . true possessor of regal solitude . . . a friend worth knowing and having.

JOANNE MARCILLE

Glowing spark of vitality gleaming in her eyes . . . rambling loquaciousness . . . generous sharer in her happiness . . . modest, fine classmate.

DARINA MARINUCCI

Attractive appearance . . . winning personality . . . gracious manner . . . demure smile . . . captivating . . . natural born artist.

YOLANDA MASI

Radiating friendliness . . . pleasing company . . . ever true and benevolent . . . happy beam of youthful light.

JEANNE McCABE

Sparkling eyes . . . slender image of voice mid radiant loveliness . . . ingenuity and capability combined . . . business mixed with pleasure.

MARY McCARTHY

Countenance bright with beaming happiness . . . truly amiable nature . . . studious . . . industrious . . . ever seeking to console.

NORMA McCARTHY

Quiet . . . demure . . . willingly does what is assigned to her and more . . . even disposition . . . loves to read.

RUTH McCARTHY

Full of pep and energy . . . enjoys dancing . . . diligent worker . . . neat and orderly . . . unsurpassed in her delightful disposition.

BEVERLY McCONNELL

Womanly . . . dignified . . . serene countenance . . . ever loyal . . . loves study periods but not for their purpose . . . "Music hath charm" for her.

WILMA McCORMICK

Well-modulated voice . . . most obliging . . . slender and fair . . . good sport . . . not easily troubled . . . all in all, a fine girl.

KATHLEEN McDONALD

Sparkling happy girl . . . complacent and gentle . . . talented in dramatics . . . tall . . . graceful . . . loves a good time . . . is liked by all.

MARY McGrATH

Gracious ways . . . winning smile . . . sincere . . . affable . . . gay . . . delightful and true friend . . . apt . . . conversation that wins everyone.

ROBERTA McGrATH

Full of witty remarks . . . cooperative . . . interested . . . always ready to help someone . . . "Ber" is a fine remedy for loneliness.

ANNE McHENRY

Personification of exemplary qualities . . . everyone's friend . . . generous . . . gracious . . . "I lost it" her by-word . . . portrait of happy girlhood.

PATRICIA McKENNA

Small . . . peppy . . . always attired attractively . . . capacity for mirth . . . blithe . . . carefree . . . kind-hearted . . . that's our "Pat."

MARY McMAHON

Sincere . . . thoughtful . . . not moved by circumstances . . . efficient . . . scholarly . . . an inquisitive look . . . spirited . . . undaunted.

MARGARET McWHINNEY

Quiet and unobtrusive in appearance . . . sweetness and simplicity . . . ever-sunny countenance . . . in her we have a true friend.

ROSA MARIE MEHR

Refined in manner . . . poised in action . . . highly ambitious . . . pleasingly loquacious . . . addition of a cheerful "something" to any group.

MARGUERITE MENSING

Undaunted, friendly . . . loyal . . . cheerful . . . earnest endeavor . . . perseverance her motto . . . good-natured.



ENES MERCURY

Effervescent redhead . . . friendly . . . charming . . . delightful . . . lovable . . . kind . . . a general favorite.



RUTH MEYERING

A blonde halo on her head . . . melancholy smile . . . delightfully charming . . . good chum to all.



JEANNE MARIE MICHAUD

Helpful spirit . . . courts responsibility . . . cheery smile for everyone . . . vivacious . . . diminutive . . . kind.



ADELAIDE MIDNIGHT

Meticulous . . . cleanliness . . . Godliness . . . voice like an angel's . . . graceful . . . sweet . . . lovely.



ELIZABETH MILLER

Captivating merriment . . . a comrade blithe . . . full of glee . . . wisely resourceful.



FLORENCE MILLER

Brown curly hair . . . life of the party . . . oblivious to all care but conscientious . . . warranted to wear well in our memories.

MARGARET MILLER

Shy, quiet . . . a glowing example of simplicity . . . beautiful smile . . . a friend well-worth knowing.

RUTH MILLER

Light-hearted . . . gay . . . clever . . . sagacious . . . seldom tastes defeat . . . refreshingly good-natured . . . amiable.

VIRGINIA MINOIA

Grave demeanor . . . eager sincerity . . . liberal-mindedness . . . frequent "punning" . . . deep, dark eyes . . . loyal friend . . . gracious lady.

JANE MULLIGAN

Calmly gracious . . . living example of how-to-win-friends-and-influence-people . . . a delightful laugh . . . persistently good natured.

MARY CATHERINE MURPHY

Short, dark hair . . . rosy complexion . . . a whiz at history . . . friendly . . . ready and willing helper.

LORAIN MYERS

Thrilling laughter . . . modern as tomorrow's headlines . . . lovable heart . . . earnest perseverance.

MARIAN NOLL

Golden hair . . . serenely tall . . . charming companion for any diversion . . . lover of poetry, conversation and friends.

FRANCES O'BRIEN

Rare brilliance . . . Irish humor . . . gleams of practicality . . . breath of friendship . . . cheery words in any situation.

JEANNE MARIE O'BRIEN

"Gladest thing under the sun" . . . delicious spray of laughter . . . very resourceful . . . best of everything.

MARGARET MARY O'CONNOR

Easy humor . . . dreamer of great dreams . . . sense and nonsense happily combined . . . always has many friends.

MILDRED OKOLOWICZ

Carrier of sunshine . . . smile and twinkle for all . . . a born diplomat . . . acme of poise.



MARY OLIVER

Preview of achievement . . . bewitchingly humble . . . "hint of mischief, hint of life" . . . radiant . . . rosy.

MARGARET O'NEIL

Whole-souled honesty . . . character a'la carte . . . "endearing young charms" . . . merry, cheery tilt in her nature.

PALMA PALOZZI

Talented hands of an artist . . . mischievously gay . . . activity and ambition . . . "nicely natural, naturally nice."

VIOLA PAVIA

Gracious listener . . . charm of silence . . . intellectual accomplishments . . . all the womanly graces . . . example worth following.

ROSEMARY PEARTREE

Debonair . . . personality tipped with mirth . . . calmly capable . . . smile that shines through tears . . . vigor in her words

CONCETTA PETIX

Gentle lady . . . very serene . . . angel's mirth . . . promise of beautiful years to come.

Nazareth Academy

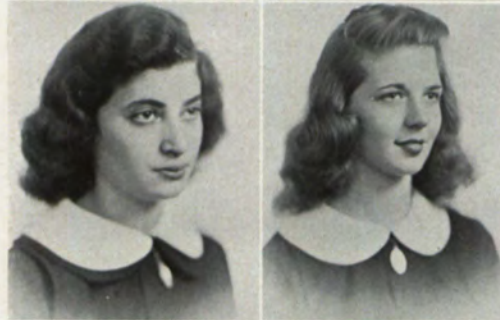
JEAN PIXLEY

Straightforward . . . dependable . . . conscientious . . . ambitious . . . twinkling smile . . . always good-natured nymph on basketball court.



NANCY PONTARELLI

Wavering "will-o-the-wisp" . . . ember eyes of sweet complacency . . . mistress of propriety . . . really enjoyable companion.



NORMA PREDMORE

Jovial . . . unobtrusive . . . well-mannered . . . imbued with ever enthusiastic smile . . . heart of gold . . . inventiveness . . . popularity.



ALICE PRESNAL

Quiet . . . reserved . . . decorous . . . fastidious . . . competent . . . equipped with flashing countenance . . . ability to win friends.



MARGARET PRITCHARD

Proficient . . . persevering . . . enthusiastic . . . refreshing . . . leader in basketball . . . ever seeking to console . . . true lady.



ELVIRA PUCILLA

Amiable . . . unpretending . . . sociable . . . earnest . . . gentle . . . through these she has acquired many friends.



CHRISTINE RADTKE

Calm . . . carefree . . . unassuming . . . true . . . nothing ever worries "Chris" . . . accomplished personality . . . lovely voice.

DOROTHY RAKOWSKI

Ambitious . . . strong of purpose . . . gifted with magnetic personality . . . animated spirit . . . unique sense of humor.

HELEN RAUBER

Refined . . . well-mannered . . . fabulously full of fun . . . everyone's friend . . . reliable . . . resourceful . . . truly individualistic.

KATHLEEN RIDLEY

Genuine . . . auspicious . . . endowed with unequalled sense of humor . . . ease of making friends . . . refined qualities.

JOSEPHINE RIEDMAN

Loves to create beauty . . . obliging . . . faithful . . . dexterous . . . studious . . . intellectual . . . complacent . . . good-natured.

MARION ROCHE

Unruffled dreamer . . . unassuming manner . . . ready to bestow sunshine . . . good-willed . . . really pleasant friend.

MARY RONAN

Always dispelling the gloomy clouds with a smile . . . eager enthusiast of basketball . . . ardor and industry combined . . . vivacious nature.

WILMA ROTH

Perfect sense of humor . . . brilliant in sports as well as in her studies . . . thoroughly enjoys good times . . . furnisher of fun.

VIRGINIA ROUSE

Lover of all things, artistic, musical, dramatic . . . pleasing personality . . . Ginny's sense of humor relieves many a trying situation.

DORIS RUFF

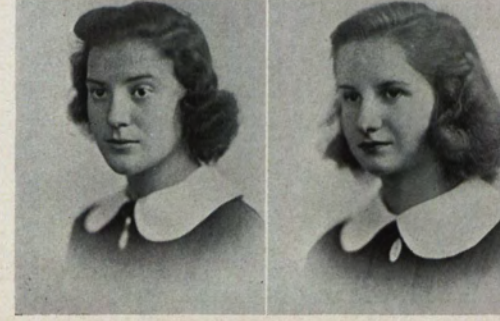
Eyes alive with merriment . . . dynamic personality . . . fine singing voice . . . electric sense of humor.

MARY RUSSELL

Angelic grace . . . mild and lovable . . . enchanting voice . . . effervescent laughter . . . sincerity combined with blushing charm.

CLARE RUSSEY

Laughable and lovable . . . rooter for missions . . . modest and shy . . . always a joke for every occasion.



BETTY ANN RYAN

Gaiety—her mode of life . . . smile for all . . . love of good time . . . conscientious attention to duty.

MARY E. RYAN

Serene and lovely . . . undaunted by obstacles . . . interests ranging from dramatics to sports . . . speech full of enthusiasm.

MARY JANE RYAN

Formula for a perfect prefect . . . capability+deep sincerity coupled with a fine sense of humor=p petite Mary Jane.

MADELINE SACCO

Ready for anything with those challenging eyes . . . small bundle of joy . . . always ready with an answer . . . well-liked.

MARGARET SALBER

Haven from turmoil . . . fair of face and full of grace . . . graciousness her by-word . . . music enthusiast.

VIRGINIA SCHAEFFER

Her blonde beauty a delight to all . . . her simplicity radiates loveliness and charm . . . an outstanding leader.

Nazareth Academy

MARIE SCHEIBLE

Dry wit . . . smiling outlook on life . . . unfeigned friendliness . . . ever on the watch for things to do . . . upright . . . courteous.



JEANETTE SCHMERBECK

An ardent student . . . harmonious friend . . . fine musical ability . . . disperser of pessimistic gloom . . . truly pleasing asset.



VERONICA SCHMIDT

Small in stature . . . quick of movement . . . pleasing laughter . . . humorous . . . optimistic in her outlook . . . captivating zest.



ELIZABETH SCHOEPS

Consideration for others . . . grave attitude that accomplishes its goal . . . bundle of good fun . . . blissful tranquility.



DOROTHY SCHREIBER

Eyes like marigolds . . . contagious smile . . . integrity . . . formula for delightful companionship . . . all good things come in small packages.



FRANCES SHANNON

Merry eyes . . . lover of excitement . . . naturally impulsive . . . rich in vivacity . . . "Why?" . . . a bit of an accent . . . terpsichorean artist.



LORRAINE SHANNON

Dreamy brown eyes . . . winsome smile . . . cheerful disposition . . . tranquility . . . sincerity . . . always on the go . . . delights in fun.

DOROTHY SHEIL

Pretty jet hair . . . quiet composure . . . conscientious student . . . serious manner offset by a decided sweetness.

RITA SKELLY

Typically "Irish" . . . smiling eyes . . . laughing lips . . . sparkling wit . . . cheerful cooperation . . . bubbling over with refreshing and easy going humor.

BARBARA SMITH

Admittedly intellectual . . . easy going . . . tall . . . languid . . . ever present sense of humor always in use . . . carefree disposition.

MARGARET SMITH

Red hair with matching freckles . . . animated brown eyes . . . inviting smile to welcome all . . . unconquerable spirit of eagerness.

MARJORIE SPRINGER

Sweetness that captures hearts . . . dimples that enhance a sunny smile . . . sincerity . . . generosity . . . unselfish giver of time.

MARY SWEENEY

Unselfish, gracious listener . . . incapable of being perturbed . . . gentle speaker . . . friendly toward all.

ANNA TARTAGLIA

Loyal, loveable . . . generous, industrious . . . always ready to help . . . perpetually smiling . . . sunny disposition.

JANE THURSTON

Charming, spontaneous, frank . . . artistic, talented . . . original . . . ever smiling . . . willing to help all.

BLANCHE TIBERIO

Dark brown eyes, cheerful smile . . . active . . . light-hearted, gay . . . fond of dancing . . . smiling disposition.

SYLVIA TIERNAN

Gay, friendly . . . pursuer of sports, especially basketball . . . easy mannered . . . capable . . . cooperative.

MARY TIERNEY

Carefree . . . vibrant . . . quick . . . endowed with wealth of dry humor . . . serious . . . shy . . . always happy.

DORIS TOOMEY

Shy, friendly . . . dancing dark eyes . . . low-voiced . . . loyal . . . quiet . . . cooperative . . . cheery smile.

EUNICE VAY

Ambitious . . . cheerful . . . energetic, industrious . . . combination of common sense, comedy . . . model sodality officer.

ELIZABETH VENTURA

Friendly, conscientious . . . source of cheer . . . winning smile . . . definition of happiness.

MILDRED VOELKL

Dainty, delightful . . . willing worker . . . cheery disposition . . . earnestness personified . . . pep, personality.

DORIS WACHTER

Active, gay . . . alert, agreeable . . . dancing . . . friendly . . . cheerful . . . smile for all.

ROSEMARY WAGNER

Soft-spoken . . . pleasing . . . real student . . . lover of books . . . fluent in speech . . . true friend of all.

MARGARET MARY WALSH

Blessed with congeniality . . . well versed in the science of winning friends . . . likable characteristics . . . good and complacent worker.



MARY LOUISE WALSH

"Airy moodiness" . . . lover of the beautiful . . . deep soft eyes . . . gracious . . . tranquil . . . charming . . . incomparable cheeriness.



BETTE WARK

Gaiety and gladness . . . enchanting as a cookie jar . . . ready for difficulty . . . eager for the delightful . . . guardian of joy.



HELEN WEBER

Dark mysterious eyes . . . slow wondering motion . . . clever . . . considerate . . . essence of mirthfulness . . . ever and always pleasant characteristically friendly.



DOROTHY WEHNER

"In manner cordially sedate" . . . seasoned knowledge . . . art of using every ability to the best advantage . . . consistently kind.



MARY WELCH

Alert and gracious companion . . . unexcelled sense of humor . . . enthusiastic and mission-minded . . . reverent and loving.



RUTH WERNER

Quiet in manner but brimming in jollity . . . intellectually inclined . . . sprig of perseverance . . . promptness in all things . . . unforgettable friend.

JEAN WHELEHAN

Music lover's guide to happy melodies . . . score of capabilities . . . smiling sermon . . . largeness of view . . . richness of thought.

MARY WHITE

Kind and generous . . . carefree and gaily inviting . . . cheery and smiling . . . aspirant to higher things . . . reflection of perfect tranquility.

VIRGINIA WHITEHOUSE

"Much wisdom often goes with fewest words" . . . delicacy and delight . . . "her very frowns are fairer far than smiles of other maidens are."

MARY WINTERROTH

Provocative gaiety . . . conscientious nature . . . serene quietness about her . . . artistic soul . . . skillful hand . . . happiness personified.

ELIZABETH YEOMAN

Willing smile . . . sparkling eyes . . . ever happy disposition . . . always keeps busy . . . ready, willing and capable.



TRYST

*I love Thee; Thou art mine,
My Bread of Life and Love.
O Sacrament, I thank Thee—
Thou hast given me Thyself.*

*O Host of Love, enflame me
To sacrifice for Thee;
O Sacrament, enlighten me
Thy holy Will to see.*

*O Glorious Food, renew me,
Make good my work and play;
Eternal Peace, O grant me
To rest in Thee one day.*





Juniors



JUNIOR CLASS OFFICERS—*left to right:*

SHIRLEY JACKMAN, *Treasurer*
FRANCES ENNIS, *President*
ADELAIDE GUNDELL, *Secretary*
ANN GANTERT, *Vice-President*

JUNIOR HOME ROOM PREFECTS

112—MARY DEDIE
301—MARJORIE COLEBECK
302—JEANNETTE FARRELL
303—FLORENCE HETZLER
304—MARJORIE COLOPIETRO
306—MARY CARR
307—SHIRLEY JACKMAN





JUNIOR GROUP — HOME ROOM 112

1ST ROW—left to right:

Grace Dimino, Eileen Scharr, Jean Arndt, Katherine Christoff, Jean King, Frances Galvin, Virginia Carpenter, Kathleen Temmerman.

2nd ROW:

Barbara Porter, Marie Lawson, Marjorie Fischer, Loyola Schults, Marion Heffer, Mary Louise Buckley, Mary Cousins.

3rd ROW:

Margaret Wilson, Betty Rake, Frances Ennis, Myra Wahl, Virginia O'Brien, Sheila Hanley, Helen Sweeney.

4th ROW:

Ida Fortino, Beatrice Malone, Rita Bettner, Rosemary Bell, Alice Madden, Margaret Julian, Rosemary Drumm.

5th ROW:

Marian Grosser, Virginia Hogan, Eileen Spillane, Mary Giustino, Mary Dedie, Helen Ann McCarthy.



Sister Marie Aimee, Moderator
Latin



JUNIOR GROUP — HOME ROOM 301

1ST ROW—left to right:

Anne Harper, Ruth Heberger, Genevieve Ricciardo, Marjorie Colebeck, Dorothy Masseth, Flavia Lobene, Betty Schaffer, Elsie Dangler.

2nd ROW:

Kathleen Wachter, Anna Porceddu, Jean Burke, Mary Gysel, Margaret Hill, Marie Weissinger, Eileen O'Neill, Eleanor Kruse.

3rd ROW:

Charlotte Flick, Irene Read, Marie Van Dierendonck, Priscilla Booth, Rosemary Samyn, Lorraine Miller, Josephine Yahn.

4th ROW:

Elizabeth McDonnell, Kathryn Fetzner, Dorothy Jeffery, Virginia Dominiak, Antoinette Bartholomeo, Ruth Stevenson, Frances Rossner.



Sister M. Anacletus, Moderator
Spanish, Business Subjects





JUNIOR GROUP — HOME ROOM 302

1ST ROW—left to right:

Jane Moak, Alice Toole, Florence Cometa, Michelina Bovenzi, Margaret De-Meyer, Elizabeth Watson, Audrey Goodwin.

2nd ROW:

Marion Martin, Dorothy Doescher, Mary Jane Allen, Elizabeth Strickland, Mary Ann McGavern, Doris Fritsch, Mary Abby Lane.

3rd ROW:

Marjorie Baker, Mildred Fischer, Doris Schmitt, Dolores Kirby, Rita Panzica, Adelaide Gundell, Ethel Bohrer.

4th ROW:

Eileen Jamieson, Elizabeth Hayes, Adele Carpenter, Marjorie Quinn, Maureen Henry, Winifred Ehmman, Jeanette Farrell.

5th ROW:

Arlene Geck, Elizabeth Reid, Cynthia Smith, Patricia Culhane, Jeanne Russell, Helen Murer.



Sister M. Consuela, Moderator
English, Faculty Adviser: The Gabriel



JUNIOR GROUP — HOME ROOM 303

1ST ROW—left to right:

Helene Meyers, Marian Boland, Marina Maccalleni, Mildred Finzer, Helen Klisz, Georgia Wellman, Mary Emmerich, Rose Di Gregorio.

2nd ROW:

Emily Pappani, Margaret Hammill, Norma Laragy, Geraldine Gilligan, Patricia Ryan, Betty Grant, Jane Rogan, Norma Smith.

3rd ROW:

Florence O'Neill, Marion Catalona, Evelyn Driver, Jean Jephson, Ruth Costich, Margaret Briceland, Jeanne Davis.

4th ROW:

Shirley Hayes, Marian Piehler, Antoinette Andreano, Mary Kelly, Marilyn Mattern, Betty Resch.

5th ROW:

Rosemary Weinmann, Elenore Mockevicius, Florence Hetzler, Alice Foley, Geraldine McMahon.



Sister M. Hilda, Moderator
Latin



JUNIOR GROUP — HOME ROOM 304

1ST ROW—left to right:

Dorothy Tiberio, Louise Zimarino, Bernadine Brooks, Dorothy Kupski, Norma Dentinger, Margaret Fleming, Bernice Mattes, Florence Buttaccio.

2nd ROW:

Marie Reitze, Anna Iezoni, Katherine Laudisi, Lucille Sadler, Evelyn Radel.

3rd ROW:

Ruth McNamara, Marjorie Colopietro, Betty Boehmer, Ruth Hart, Ruth Farrell, Elizabeth Williams, Marion Simami.

4th ROW:

Rita Long, Helen Schaeffer, Dorothy Koen, Lois Volkmar, Ruth Gysel, Rose Pastiglia.



Sister Marie Ann, Moderator
Business Subjects



JUNIOR GROUP — HOME ROOM 306

1ST ROW—left to right:

Mary Plant, Margaret Metcalfe, Beverly Groth, Ann Gantert, Marcella Rehberg, Corinne Frank, Rita Kress, Mary Riordan, Jeanne Boehm, Lois Bolton.

2nd ROW:

Marjorie Martin, Mary Mills, Joan Listman, Dorothy Housel, Lorraine Kress, Jean O'Halloran, Patricia Mahoney, Jeanne Kirby, Margaret Doran, Elizabeth Sweeney.

3rd ROW:

Dorothy Carcelli, Jane Eber, Vivian Scherer, Marjorie Fischer, Lois Erdle, Rita Powers, Marjorie Coyle, Anita Otero, Orene Jacobs, Phyllis Walsh.

4th ROW:

Yolanda Romano, Mary Carr, Philomena Marinucci, Janet Murphy, Margaret Owen, Mary Brophy, Elaine McAvoy, Jean Golding, Mary Alexander, Mary Morgan.

5th ROW:

Carol Baker, Clare Kane, Jeanne Cochran, Jessie Lutz, Jane Hasselwander, Isabelle Keenan, Rosemary Heilman, Kathryn McNaughton, Helen Heyer, Laura Skakuj, Marjorie McCormick.



Sister M. Annunciata, Moderator
French, Italian



JUNIOR GROUP — HOME ROOM 307

1ST ROW—left to right:

Elizabeth Cassick, Dorothy Ritz, Mary O'Keefe, Rosemary Meagher, Marie May, Margaret Frank, Eugenia Boguslaw.

2nd ROW:

Ruth Hiebler, Grace Ritz, Mary Jane Ribstein, Angeline Alesso, Mary Catherine Ragan, Wilma St. Peter.

3rd ROW:

Johanna Di Lella, Marjorie Leinen, Dorothy Scheil, Doris Cotter, Doris Kraft, Jean Lafferty.

4th ROW:

Patricia Buelte, Pauline Polcyn, Geraldine Feltz, June Fischer, Shirley Jackman.



Sister Rosemary, Moderator
Spanish



STUDENTS ABSENT ON PHOTOGRAPHY DAY

1ST ROW—left to right:

Doris Andrews, Shirley Mostyn, Norma St. Peter, Therese Russer, Marguerite Morton, Dorothy Schropp, Joanne Osier, Elaine Schmitt, Jane Resch, Margaret Deegan.

2nd ROW:

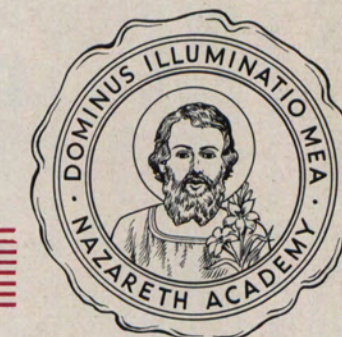
Alice Flaherty, Margaret O'Connor, Doris Linfoot, Teresa Healy, Teresa Kortchak, Shirley O'Brien, Eleanor Boland, Lena Caponetti.

3rd ROW:

Bernadine Ross, Florence Tobin, Geraldine Keller, Betty Pearson, Jacqueline Miller, Joan Hayes, Madeleine Savary.

4th ROW:

June Healy, Dolores Passero, Eileen O'Neill, Monica Bonn.



Sophomores



SOPHOMORE CLASS OFFICERS—*left to right:*

BERNICE KUNZER, *Vice-President*
JEANNETTE GEORGER, *President*
MARGARET HART, *Treasurer*
AGNES MEYERING, *Secretary*

SOPHOMORE HOME ROOM PREFECTS

216—MARY VAIL
217—LORRAINE REIF
218—LILLIAN CASPER
219—MARIE COLLINS
317—JEAN DEVERELL
319—AGNES MEYERING





SOPHOMORE GROUP — HOME ROOM 216

1ST ROW—left to right:

Patricia Dennis, Betty Dunne, Theresa Hallatt, Janet Mallon, Clare Vroman, Mary Ann Lewis, Patricia Gallagher, Maureen Langton, Joan Greenwood.

2nd ROW:

Mary Elizabeth McBride, Grace Mitrano, Betty Jane Gardner, Marie Sherry, Patricia Taylert, Rita Meisenzahl, Theresa Seaton, Betty Camella, Jane McDonald.

3rd ROW:

Alice Normile, Mary Jane Heindrich, Irene Cullen, Marion O'Connor, Ruth Donoghue, Mary Jane Schleich, Frances Romagnola, Gemma Baccaro, Pauline Cattalani.

4th ROW:

Helen Neary, Colleen Di Stasio, Monica Hunt, Mary Vail, Marion Richardson, Barbara Russer, Beverly Booth, Louise Miller.



Sister M. Florentine, Moderator
Geometry



SOPHOMORE GROUP — HOME ROOM 217

1ST ROW—left to right:

Bernice Terhaar, Mary Jane Richardson, Helen Karvelis, Bernardine Kraff, Melania Pryhoda, Mary Jane Wallensach, Eleanor Frederich, Eleanor Donals, Barbara Burns, Ruth Gordier.

2nd ROW:

Rita Flanagan, Rose Pretzold, Dorothy Kastner, Jane Davis, Mary Pelligra, Florence Pisarczyh, Carmela Niger, Marjorie Maxwell, Mildred Holland, Janet Cooper.

3rd ROW:

Shirley Kellman, Mary Spaziano, Rosemary Schlaffer, Alice Rutan, Gertrude Palulonis, Betty Brannan, Marie Zimmer, Ruth Magin, Lorraine Reif, Lillian Kolb.

4th ROW:

Audrey O'Connell, Dorothy Memmel, Anne Wittman, Dorothy Walter, Marie McGuire, Dorothy Glossner, Edna Brown, Mary Tremamonde, Florence Gatte-meier.

5th ROW:

Mary Ellen Berkes, Rita Yahn, Gretel Mehr, Ruth Birecree, Audrey Pixley, Marie Zwach, Celeste Ronche, Mary Ellen Flanagan, Mary Wall, Lily McBride.

Sister Raymond



Sister M. Raymonda, Moderator
Mathematics, Science, Spanish



SOPHOMORE GROUP — HOME ROOM 218

1ST ROW—left to right:

Norma Hefter, Catherine Johnson, Marie Kelly, Louise Coppens, Ruth Flanagan, Joan Englert, Jane Keady, Corinne Lorenz, Loretta Gurney.

2nd ROW:

Betty Wurtz, Dolores Kohler, Mary Bonsignore, Elizabeth Richardson, Agnes Gefell, Frances Moran, Bernice Vay, Irene Kelly, Rose Marie Blure.

3rd ROW:

Jean Wirley, Florence McCarthy, Mary Riedel, Gloria Galvin, Arlene Rump, Teresa Nourse, Eileen Stiner, Jane Klein, Margaret Quigley.

4th ROW:

Gertrude Nusz, Lucille Brady, Bernice Kunzer, Rosemary Sullivan, Florence Schantz, Mary Margaret Wacker, Jeanette Petrosino, Marcella Grimm.

5th ROW:

Edith Dittman, Luella Sprague, Lillian Casper, Margaret Arundel, Harriet Zimbrick, Anna Romeo, Ruth Downs, Margaret Hart.



Sister M. Evelyn, Moderator
English, Speech



SOPHOMORE GROUP — HOME ROOM 219

1ST ROW—left to right:

Marilyn Klein, Dorothy Graham, Helen McDonald, Hildegard Heinrich, Marion Reynolds, Mary LaFrance, Shirley Maid, Concetta Rizzo.

2nd ROW:

Rosina Tallarida, Barbara Miles, Alma Mattia, Betty Schiller, Irene DeClerck, Jeanne Block, Mary Catherine Shay, Elsie Keirsbilck.

3rd ROW:

Marie Collins, Eleanor Adams, Helen Mischia, Nora Mae Croston, Mary Anne Doyle, Eileen Noonan, Mary Venturelli.

4th ROW:

Teresa McNulty, Betty Miller, Janet Arlidge, Jean Krenzer, Loretta Levis, Joan Gutberlet, Olga Voss.

5th ROW:

Margery Vaeth, Marion Gallipeau, Shirley Tirpaeck, Shirley Yantz, Audrey Scottebo, Rose DiSalvo.



Sister M. Lourdes, Moderator
Religion



SOPHOMORE GROUP — HOME ROOM 317

1ST ROW—left to right:

Margaret Donoghue, June Schedlin, Betty Treacy, Catherine Foos, Aileen O'Dea, Marie Christman, Agnes Brown, Angelina Vella, Dena Masciarelli.

2nd ROW:

Joween Russi, Lorraine Cook, Marjorie Esterheld, Jean Seidewand, Ruth Nelson, Bernice McCall, Doris Incavo, Nancy Riggs.

3rd ROW:

Dorothy Modzelewski, Kathleen Lark, Alice Keenan, Josephine Canzano, Frances Camera, Jean Deverell, Ruth Hasselberg, Anne Schnapier.

4th ROW:

Claire O'Brien, Nancy Ward, Marjorie Kolh, Patricia Curtis, Mary Terese Quigley, Cecilia Slowe, Muriel Meyer, Jeanette Georger.

5th ROW:

Mary Lou Thaney, Joan McGuire, Jacqueline Miller, Mary Maloy, Ruth Barry Helen Lingl.



Sister M. Matthew, Moderator
Religion



SOPHOMORE GROUP — HOME ROOM 319

1ST ROW—left to right:

Edith Giangreco, Laura Mae Syzmore, Mary Elizabeth Milne, Bernadette Nolan, Patricia Gundell, Marjorie Russell, Geraldine Heintz, Nancy Vogt, Frances McDonald.

2nd ROW:

Dorothy O'Brien, Patricia Lorenz, Patricia Murray, Joan Lynch, Jeanne Clark, Jeanne Marie Kelly, Jean Russell, Josephine DiPonzio.

3rd ROW:

Mary Kay Fritz, Rose Marie Senz, Rose Matthews, Rosemary Damia, Dorothy Carducci, Marie Anne Quinlan, Alice Ryan, Jane Marie Jones.

4th ROW:

Ann Usher, Elaine Ringelstein, Margaret Orlado, Dolores Bryant, Sylvane Bement, Antoinette Fazio, Alice Kolanski, Della Winkler.

5th ROW:

Margaret Schoepfel, Pauline Alderman, Joy McNamara, Fawn Scheffel, Eleanor Coughlin, Agnes Meyering, Rita Mae Lerch.



Sister Grace Regina, Moderator
French

Freshmen



FRESHMEN CLASS OFFICERS—left to right:

EILEEN EMBURY, *Treasurer*
 ALMA TSCHETTER, *President*
 CHERYL VAUGHAN, *Secretary*
 SHIRLEY SNOW, *Vice-President*

FRESHMEN HOME ROOM PREFECTS

103—SALLY SHIPTON
 104—KATHERINE POWOWICH
 105—THERESE RUSSE
 106—ESTELLE JACKMAN
 107—SHIRLEY SNOW
 108—ALMA TSCHETTER
 114—DOROTHY CASPER





FRESHMEN GROUP — HOME ROOM 103

1ST ROW—left to right:

Ruth Turner, Sally Lou Bemish, Josephine Cimino, Mary Jean Meyering, Mary Lou Werner, Agnes Edwards, Sally Shipton, Antoinette Altavena.

2nd ROW:

Arline Pixley, Mildred Bates, Isabell Chambers, Virginia Howell, Joyce Goodwin, Eileen O'Connell, Joan Lochner, Josephine Girardi.

3rd ROW:

Marion Elter, Joan Quigley, Mary Lou Casey, Ruth Anne Healy, Dorothy O'Neill, Grace Trovato, Ellen Van Atta.

4th ROW:

Patricia Lang, Mary Kircher, Patricia Schmitz, Dolores McGahn, Gloria Rosen-
Sister John Mary
 een, Mary Schiller, Kathleen Flanagan.

5th ROW:

Rosemary Hart, Betty O'Keefe, Mary Crowley, Ruth Donegan, Kathleen Beattie, Carol Mykins, Jane Mahler.



Sister John Mary, Moderator
Religion



FRESHMEN GROUP — HOME ROOM 104

1ST ROW—left to right:

Rosemary Skeffington, Eileen Tuite, Ida Fiore, Evelyn Hiller, Eleanor Hiller, Mary Alice Ruffino, Lorraine Nolawalski, Katherine Popowich.

2nd ROW:

Concetta Miccichi, Joline Hughes, Eileen Embury, Helen O'Neil, Lois Smith, Nancy Cleere, Felicia Woloszyn, Mary E. Crowley.

3rd ROW:

Shirley Schoenherr, Patricia Latimer, Rose Marie Hartz, Lorraine Kirchoff, Hedwig Mueller, Mary Peartree, Kathleen Maginn.

4th ROW:

Margaret Beeman, Jean Innocenzi, Rosemary Bogner, Carmela D'Onofrio, Muriel McGrady, June Radel, Florence Springett.

5th ROW:

Loretta Florack, Katherine Schirmer, Margaret Goetz, Rita Birdsey, Eleanor Karp.



Sister Anna Joseph



Sister Anna Joseph, Moderator
Social Studies, Moderator, Our Lady's Sodality



FRESHMEN GROUP — HOME ROOM 105

1ST ROW—left to right:

Lauretta Tette, Jean Marie Wahl, Mary Louis, Arlene Chase, Erma Boehmer, Geraldine Vay, Jeanne Martin, Bessie Iezzoni.

2nd ROW:

Theresa Redmond, Margaret Tette, Anne McGrath, Kathleen McDonald, Eleanor Hayden, Catherine Fallon, Jean Hofmann, Shirley Siebert.

3rd ROW:

Ann Stuart, Dorothy Kolb, Celine Kausch, Shirley Dean, Mary Ann Muller, Evelyn Blocchi, Margaret Greene.

4th ROW:

Geraldine Miles, Mary Jane Frawley, Jean Zapf, Margaret O'Connor, Ruth Hoffner, Helen Stock.

5th ROW:

Viola Cooper, Virginia Allen, Dorothy Osterman, Mildred Eberhard, Mary Louise Flaherty.



Sister M. Carlina



Sister M. Carlina, Moderator
Algebra



FRESHMEN GROUP — HOME ROOM 106

1ST ROW—left to right:

Mary Delehanty, Shirley Miller, Jane Ryan, Margaret Raetz, Evelyn Schmitt, Rita Cottom, Marion McGuire, Helen Mandell.

2nd ROW:

Ann Brown, Ellen Holland, Bernadette Slater, Marian Frederick, Gilda Maccellini, Mary Koneski, Bernadette Fenlon.

3rd ROW:

Janet Schweitzer, Elvera Antonelli, Betty Ambrose, Estelle Jackman, Marie Pastiglia, Dorothea Wagner, Althea Helmbold.

4th ROW:

Kathryn Kanka, Eleanor Yockel, Beverly Duffy, Barbara Christoph, Joan Bieber, Teresa Haney, Marie Musson.

5th ROW:

Mary Loewenguth, Joan Keenan, Dorothy Guerinot, Marjorie Sullivan, Helen Sweeney, Aileen Nealon, Elsie Reiss.



Sr. M. Callista



Sister M. Callista, Moderator
Latin



FRESHMEN GROUP — HOME ROOM 107

1ST ROW—left to right:

Marilyn Baker, Jean Meisenzahl, Lorraine Tormey, Cecelia Moker, Rose Romagnola, Marilyn White, Elizabeth Heinrich, Catherine Borreggine.

2nd ROW:

Vera Dentinger, Antoinette Branca, Eileen Janowski, Rose Del Vecchio, Lorraine Herman, Virginia Pike, Margaret Hoss.

3rd ROW:

Marion Kiessel, Mary Sellmayer, Marjorie McNulty, Shirley Snow, Dolores Wegman, Mary Callemeyn, Patricia Chatterton.

4th ROW:

Melvina Schmitt, Mary Ryan, Rose Marie O'Brien, Lenore Fess, Teresa Krenzer, Dolores Zimmer, Joyce Frey.

5th ROW:

Margaret Normile, Mary Taylert, Janice Martin, Jean Lussier, Lorna Roberts, Jeannine Guillier.



Sister M. Clementia, Moderator
Social Studies

Sister M. Clementia

FRESHMEN GROUP — HOME ROOM 108

1ST ROW—left to right:

Marie Heyer, Elsie O'Connell, Jane Gurney, Peggy Rogers, Edna Cannarella, Bernice Kraft, Jane Finch, Clarice Casey.

2nd ROW:

Louise Molella, Vrene Conole, Dorothy Bartlett, Mary Lou Egan, Jeannette De Meyer, Jean Reinhardt, Mary Sauer, Barbara King.

3rd ROW:

Betty Kramer, Marie Hess, Jane Dunn, Ida Lynch, Helen Wolter, Joan Kunz, Agnes Kuchman.

4th ROW:

Cheryl Vaughan, Ruth Welch, Alma Tschetter, Dorothy Plunkett, Connie Mika, Ann Fitzgibbons.

5th ROW:

Betty Messe, Philomena Campana, Bernice Senkala, Rosemarie O'Hara, Marilyn Mogenhan, Betty Donovan.



Sister Marie Catherine

Sister Marie Catherine, Moderator
English





FRESHMEN GROUP — HOME ROOM 114

1ST ROW—left to right:

Leah Cioffi, Marilyn Peer, Jean O'Brien, Mary Ellen Roland, Geraldine Fitzpatrick, Ann Shirley Ehrstein, Margaret Seward, Jeanne Hallatt.

2nd ROW:

Anna Zimarino, Anita Incavo, Patricia Gantert, Doris Metzger, Claire Darby, Juanita Torruella, Joyce Corcoran.

3rd ROW:

Geraldine Bartylak, Dorothy Magner, Mary Rosalind Sommer, Jean Kinsella, Barbara Olmstead, Marguerite McDonald.

4th ROW:

Mary Ann Higbie, Dorothy Casper, Phyllis Yeckel, Hilda Di Giulio.



Sister M. Bernardine, Moderator
Religion, English

Sister M. Bernardine



FRESHMEN GROUP — HOME ROOM 211

1ST ROW—left to right:

Marion Houston, Angela Roncone, Ann Shanhart, Melina Cutali, Gloria Fracassi, Patricia Waddell.

2nd ROW:

Mary Marinucci, Verna Quetchenbach, Irene Makowiecki, Mary Mogenhan, Eileen Maloy.

3rd ROW:

Elizabeth Johnson, Genevieve Spallina, Geraldine Schwartz, Loretta Di Crisci, Jane McCarthy.

4th ROW:

Evelyn Spall, Arlene Voellinger, Rosemary Beach, Rita Tirpaeck.



Sister Marie José, Moderator
German, Physics, Geometry



MARY

*O Mary, gowned in gold,
O Mother, gentle, mild,
Show me thy treasured child.*

*Tell me again, O Mother,
O Mary, gowned in blue,
"My child, He died for you."*



SAINT JOSEPH

*O Carpenter of Nazareth
Build
Virtue standing strong and firm.*

*O guardian of virginity
Keep us
Wrapped in grace and purity.*





EIGHTH GRADE

1st Row—left to right:

Aileen Wisner, Francine Wickes, Clarice Beikirch, Mildred Chistolini, Anne Meisenzahl, Joanne Fulreader, Mary Jane Haigh, Lena Lacagnina, Anne Burke, Veronica Brandt.

2nd Row:

Marie Amico, Joanne D'Aprile, Shirley Oster, Roberta Brown, Jacqueline Burgess, Rosemary Rauber, Joan Hallett, Jeanne Roche, Shirley Archibald, Mary Margaret Bradley.



SISTER M.
JOSEPHINE
*Teacher,
Eighth Grade*



SISTER MARIE
BERNARD
*Teacher,
Sixth and
Seventh Grades*



At the top—SEVENTH GRADE—left to right:

Joanne Christie, Jean Gurnes, Remigia Rauber, Nancy Owen, Katherine Ann Fleck, Bernice DeMarse, Cecilia Agnes Wohlrab, Alice Sayer, Geraldine Gaffney.

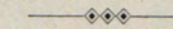
Below—SIXTH GRADE:

Marilyn McDonald, Eleanor Fazio, Sheila O'Grady, Janet Jewett, Ruth Ayen, Nancy Myles.



“KATHLEEN”
The Maid of Killarney

Presented by
NAZARETH GRAMMAR DEPARTMENT



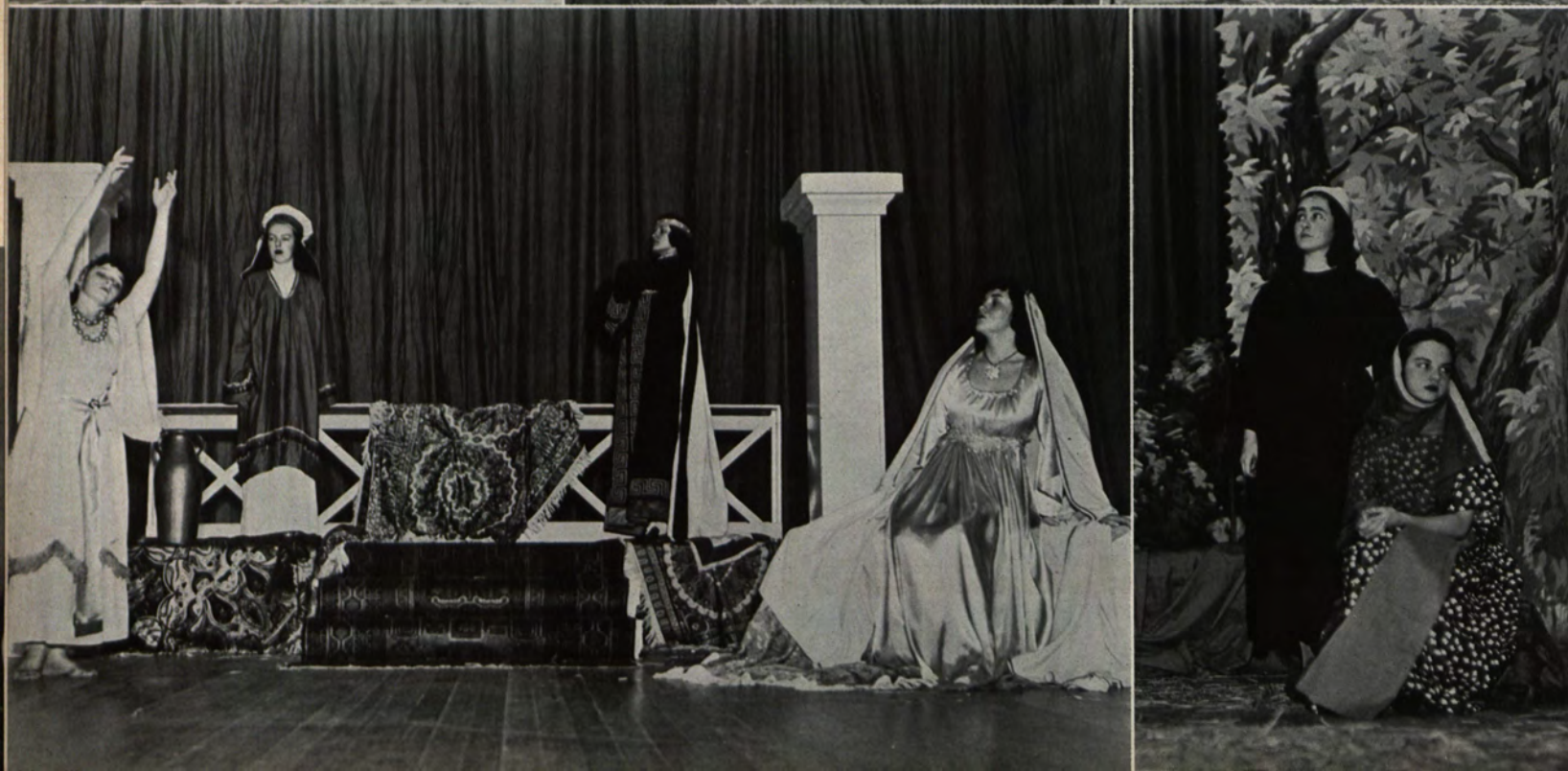
CHARACTERS

Bridget—Kathleen's devoted nurse	MARY M. BRADLEY
Larry	NANCY OWEN
Biddy	ANNE BURKE
Kathleen	MARY JANE HAIGH
Herald	SHEILA O'GRADY
O'Toole	SHIRLEY OSTER
Paddy, Biddy's brother	NANCY MYLES
Old Man	ROSEMARY RAUBER
Old Woman	JEANNE ROCHE
Peter	GERALDINE GAFFNEY
Mary	REMIGIA RAUBER
Solo Dance	JANE DAVIS '44

FAIRIES: Lena Lacagnina, Janet Jewett, Aileen Wisner, Mildred Chistolini, Joan D'Aprile, Cecilia Wohlrab, Jean Byrnes, Marilyn McDonald, Joanne Christie, Clarice Beikirch.

IRISH REEL: Nancy Owen, Mary Jane Haigh, Francine Wickes, Katherine Fleck, Veronica Brandt, Marie Amico, Jacqueline Burgess, Roberta Brown, Nancy Myles, Anne Burke.

VILLAGERS: Joanne Fulreader, Anne Meisenzahl, Joan Hallett, Bernice DeMarse, Alice Sayer, Ruth Ayen, Geraldine Gaffney, Eleanor Fazio.



"And Joseph also went up from Galilee, out of the city of Nazareth, into Judea, to that city of David, which is called Bethlehem."



"THE BETHLEHEM ROAD"

ANNUAL NATIVITY PLAY

PRESENTED

BY THE MEMBERS OF THE SPEECH CLASSES

AND

THE MEMBERS OF THE PEROSIAN CHOIR



"Glory to God in the highest; and on earth peace to men of good will."



Scenes from
"The Chimes of Normandy"

Opera

presented by the
Perosian Choir,
the Aquinas Glee Club and
Nazareth Orchestra

THE CAST

- Serpolette . . . Mary Esther Danehy
 Germaine Arlene Basch
 Henri Charles Lewis
 Jean Grenichieux . . . George Sophie
 Gaspard Charles Carroll
 The Bailli Donald Smith
 Registrar Robert Hennessy
 Assessor William Long
 Notary John Davis

—assisted by singing village
maidens, peasant girls, vil-
lagers, men servants, chorus
maidens, and dancers.



Senior Members
of the
Perosian Choir



A group of gypsy chor-
isters who sang in the
Fall recital.



"Song brings of itself a cheerfulness that
wakes the heart to joy."



SISTER M. IRMINA
Vocal Music; Perosian Choir





*The Senior
Class presents
"Jessica's Journey"
on
the evening
of
April 20 and 21*

Top picture—The Cast of April 21

Below—The Cast of April 20

professional presentation

—sparkling spontaneity

—enchanting entertainment

Members of Nazareth Music Department



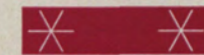
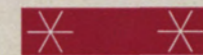
SISTER THOMAS MARIE
Instrumental



SISTER ROSE TERESA
*Instrumental and
Vocal*



SISTER GRACE CLARE
Instrumental



MR. KENNETH WAIDE, B. Mus.
Orchestra



PERCUSSION

SHEILA HANLEY
WILMA BURKE
MARY COUSINS

PIANO

FRANCES ENNIS



WOOD WINDS

Flute

JEANNETTE GEORGER

Clarinets

DOROTHY BARTLETT
MARILYN MOGENHAN
JOAN HAYES

BRASSES

Horns

JEAN DEVERELL
GERALDINE McMAHON

Trumpets

JEANNETTE SCHMERBECK
CATHERINE FOOS
MARGARET DORAN

Trombones

VIRGINIA HOGAN
RUTH McNAMARA

STRINGS

Basses

CORINNE HAERING
BEVERLY McCONNELL

Violas

EVELYN DRIVER
BETTY CASSICK

Cellos

ELEANOR COUGHLIN
MARIE SCHEIBLE
VERONICA BRANDT



Violins

DOROTHY CARCELLI
MARJORIE FREAR
JOAN McGUIRE
YOLANDA ROMANO

HILDA DiGIULIO
ANN DORAN
MARY MALOY
SHIRLEY KELLMAN
RUTH MEYERING

MILDRED FINZER
ELAINE SCHMITT
JANE RESCH
ROSEMARY RYAN

Sister Marcella at her desk.



Mrs. Mary Wright Gallagher, President of the Alumnae Association, presents the public address system to the school through Helen Rauber, Treasurer, of the Senior Class.

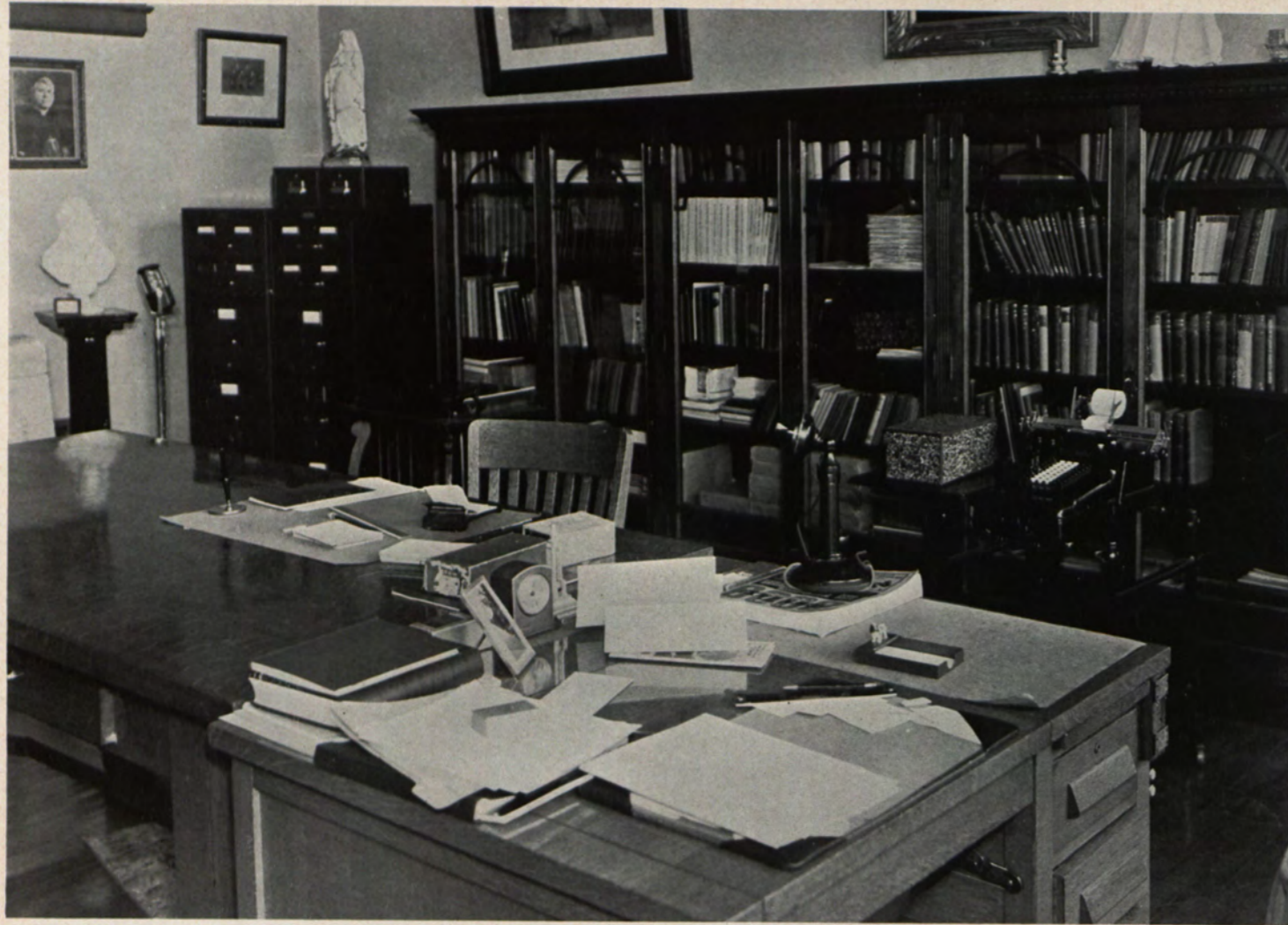


The Shrine of Our Lady of Lourdes on the opposite page, which is the Faculty and Student body's memorial and the public address system, gift of the Alumnae Association, attest the deep regard in which all at Nazareth hold their deceased Principal and friend. Through future years they will serve to remind other Nazareth students of her whose life will ever be the soul and inspiration of Nazareth Academy.



"I am the Immaculate Conception."





MAIN OFFICE



SISTER AGNES GERTRUDE
Secretary

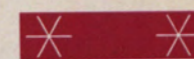


SISTER TERESA ANN
Secretary

Your record? One moment, please.

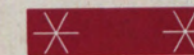


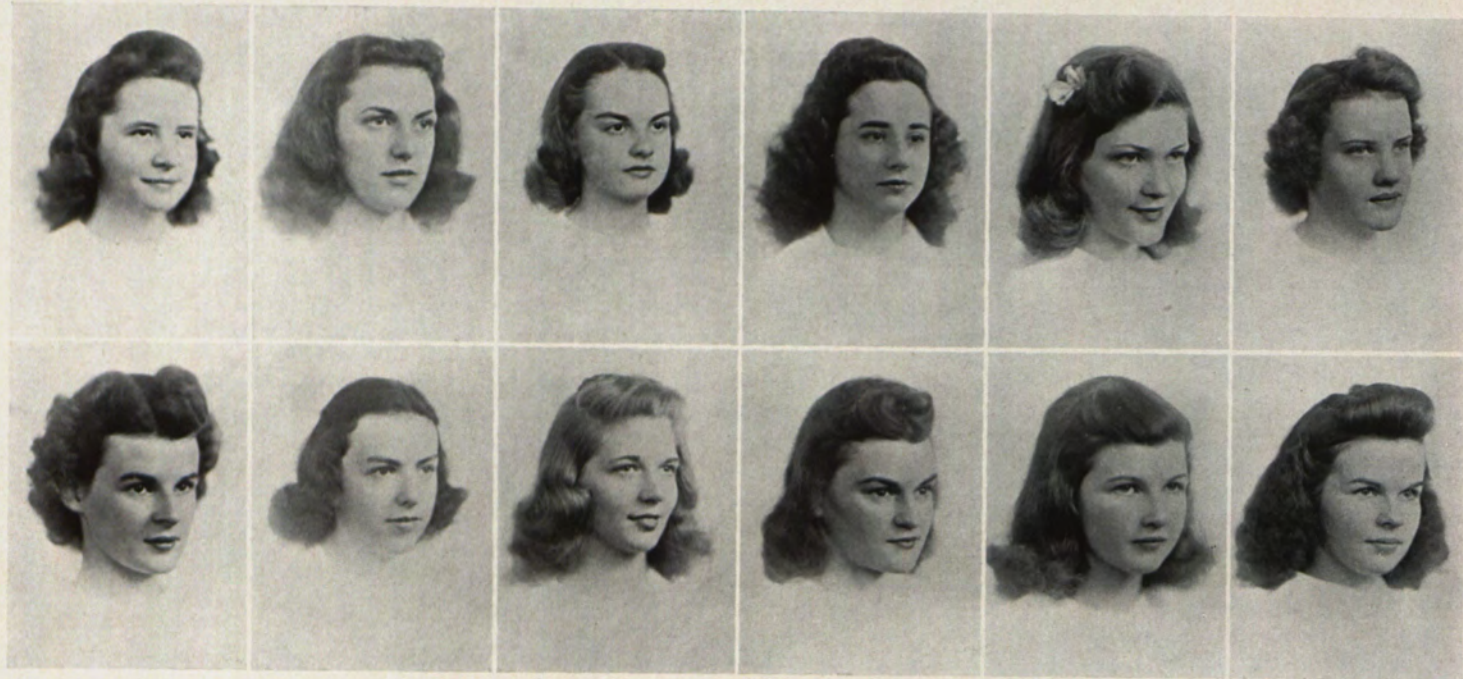
Our Bishop, our Chaplain and our Retreat Master, the Reverend Thomas J. Tapp, C.S.S.R., with the Lanthorn editors at the close of retreat.



His Excellency presents a \$100 Defense Bond to Patricia Latimer, winner of first prize in the Catholic Courier subscription campaign.

Patricia secured seventy-five subscriptions.





Ann McHenry
Virginia Rouse

Alberta DeRitis
Catherine Foley

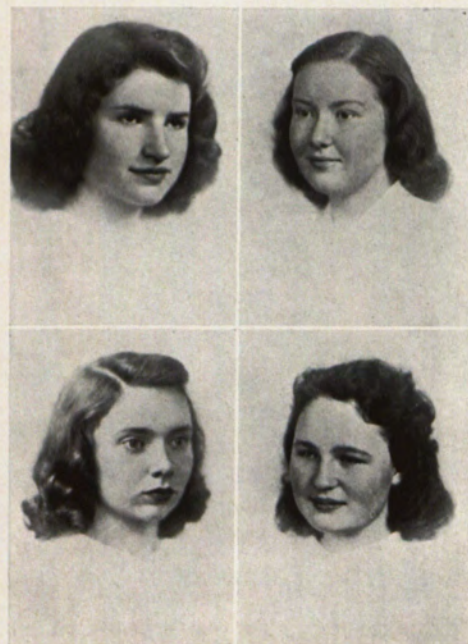
Jane Gaffney
Dorothy Rakowski

Mary Lou Walsh
Geraldine Knapp

Doris Giebel
Frances Hayes

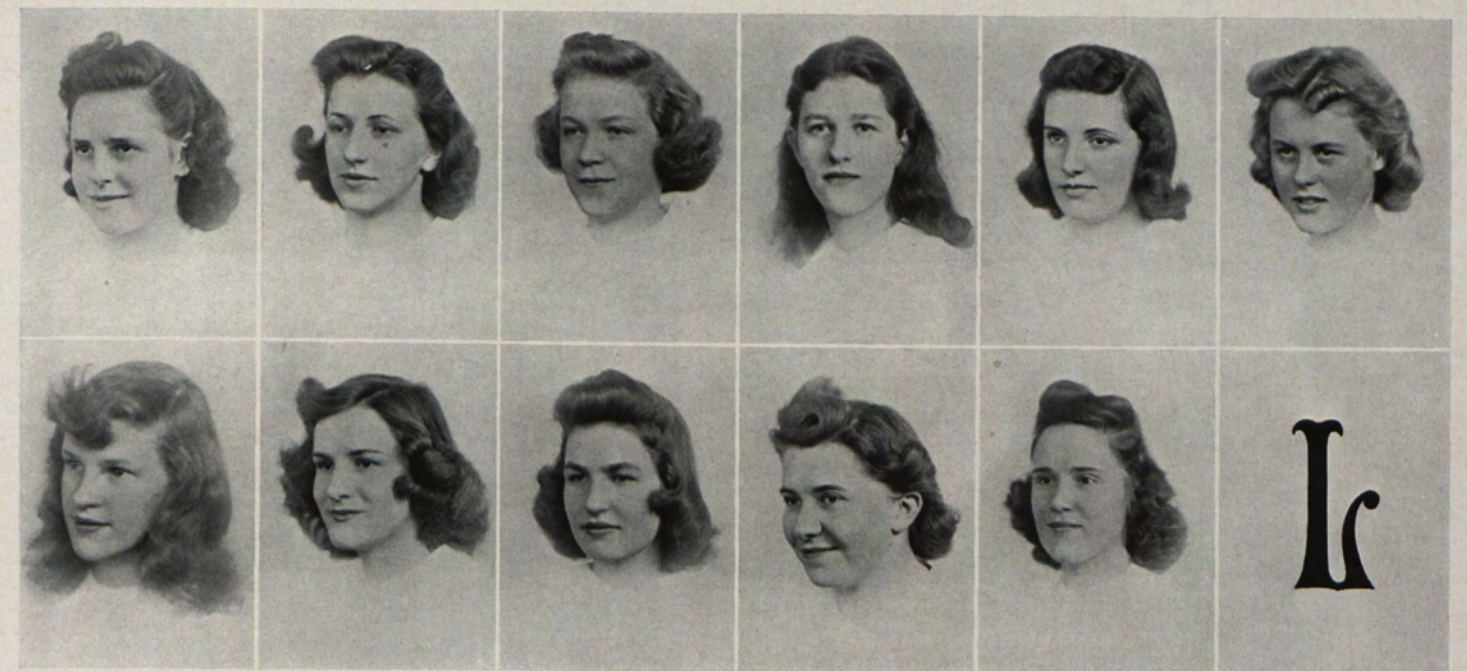
Mary Winterroth
Ann Doran

THE LANTHORN STAFF



JANE E. MULLIGAN—*Editor-in-chief*
RUTH M. FARRELL—*Associate Editor*

MARY ESTHER DANEHY—*Business Editor*
MARY H. RUSSELL, *Assistant Business Editor*



Mary Lombardo
Jane Thurston

Elizabeth Heisinger
Florence Miller

Jessie Ann Butler
Jean Jost

Josephine Riedman
Thelma Feeny

Mary Sweeney
Mary McMahan

Ruth Meyering

THE LANTHORN STAFF



SISTER M. PAULINE
Faculty Adviser—The Lanthorn;
Mathematics; Supervisor of Studies



Seniors Who Assumed the Financial

Left to right:

1ST ROW: Eleanor DelVecchio, Kathleen Kohlman, Betty Marchner, Ann Doran, Wilma Burke, Jane Thurston.

2ND ROW: Palma Palozzi, Ann Tartaglia, Doris Ann Flaherty, Alberta DeRitis, Virginia Rouse, Lena Zimarino.

3RD ROW: Mary Lanzalaco, Virginia Schaefer, Ruth Meyering, Elizabeth Heisinger, Clara Capobianco, Mary Winterroth.

4TH ROW: Ruth Farrell, Virginia Minoia, Geraldine Knapp, Rita Dowling, Joan Loewenguth.



Responsibility of the Lanthorn

Left to right:

1ST ROW: Eunice Vay, Marjorie Springer, Dorothy Burkard, Mary Russell, Mary Esther Danehy, Helen Mary Baumann.

2ND ROW: Helen Dodd, Phyllis Campamella, Margaret Deverell, Jessie Ann Butler, Pauline Filippone, Jane Mulligan.

3RD ROW: Mary McGrath, Ann McHenry, Betty Ryan, Loraine Myers, Rosemary Hunt, Wilna Beeman.

4TH ROW: Helen Rauber, Mildred Okolowicz, Jane Gaffney, Catherine Foley, Edna Gessner, Mary Lou Walsh.

Absent: Mary Sweeney, Helen Bopp, Mary McGrath, Enes Mercury.



MARY K. MURPHY, *Editor-in-Chief*

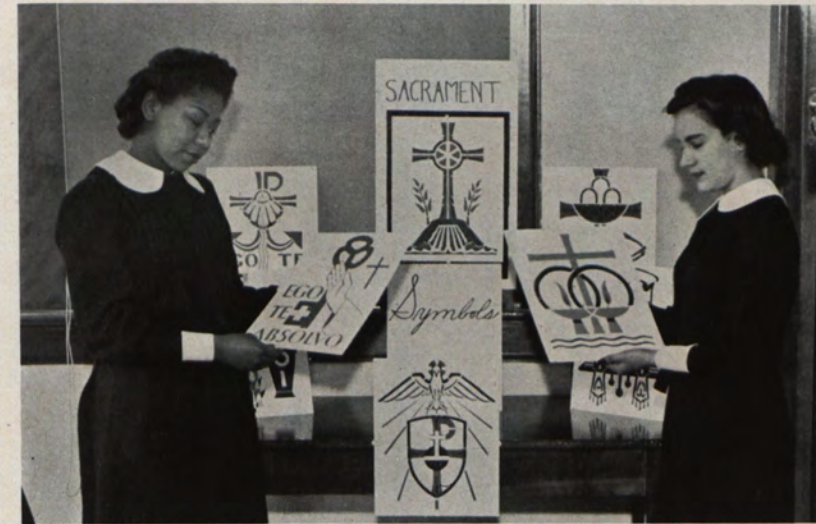
Gabriel, Bearer of Glad Tidings, all hail!

We'll have you fulfilled the prophetic title so fittingly bestowed on Nazareth's news sheet.

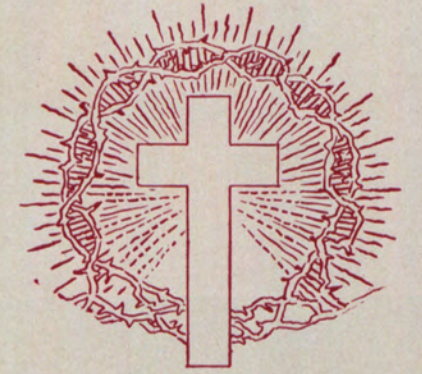
Each month you have been awaited with eager anticipation and not once have you failed to measure up to the highest expectations of the members of the faculty and student body.

May you ever preserve your cultural tone and your high literary level for which you have already received unstinted praise both from within and from without!

To Nazareth's Gabriel, to its Editor-in-Chief, to its Board and to its Faculty Staff, congratulations from the members of the Lanthorn Board.



Margaret and Agnes interpret symbols in Religion class.



Religion—bulwark of society

Symbolism—teacher of religious truths

SISTER ANNA CECILIA
Religion

SISTER ST. DOROTHY
Religion

SISTER M. ANTONINA
Supervision

Sister Anna Cecilia

Sister M. Antonina





Opposite:

Nazareth Academy students help to win the war by: Prayer, First Aid Courses, Red Cross work, Sale of Defense Stamps, Keeping Fit. They also assist on Draft Boards and Sugar Rationing.



*Then conquer we must when our cause it is just
 And this be our motto: "In God is our trust."
 And the Star Spangled Banner in triumph shall wave
 O'er the Land of the Free and the Home of the Brave.*



SISTER M. ROBERTA
Librarian



SISTER FRANCES TERESA
Home Room Moderator—206
English

SISTER ROSE EILEEN
Home Room Moderator—210
English



THE LIBRARY

"Wardrobe of Literature"





Students at work in one of Nazareth's three typing rooms wherein are trained many of Rochester's outstanding typists.



This newly equipped office practice room provides for instruction and practice in the use of all the office equipment required by the University of the State of New York for the Regents approved course in office practice.



A GROUP FROM THE
COMMERCIAL HONOR CLUB

Left to right: Virginia Schaefer, Alice Presnal, Mary Ronan, Betty Yeoman, Wilma Roth.



Instructors in Business Subjects



SISTER WILLIAM MARIE
Home Room Moderator—201

SISTER M. JOAN



SISTER HELEN CONCEPTA

SISTER MARY REGIS

SISTER M. URSULA



Josephine and Doris plan a sketch for the Lanthorn.

The Study of Art is of high value in the Growth of the Intellect.



SISTER ST. MARGARET
Home Room Moderator—207
Art, English



Jeanne and Jean in an attempt to grasp the limits of history.

"Though mingled with the discords of warring cannon and dying men there is a Divine melody running through this great epic of hope and halcyon days to come."

SISTER MIRIAM
Home Room Moderator—208
Social Studies

SISTER ROSE ANGELA
Home Room Moderator—205
Social Studies





SAINT JOSEPH'S WORKSHOP

HOME ECONOMICS DEPARTMENT

"The strength of a nation is in the intelligent and well-ordered homes of its people."

On opposite page:

Food students at work in the four-unit kitchen.
 Busy groups in the clothing department.

Above:

The living room, dining room and bedroom.



SISTER MARIA GRATIA
 Cafeteria



SISTER MARIE ANTHONY
 Food, Home Management
 Cafeteria



SISTER TERESA EDWARD
 Director—Home
 Economics Department
 and Cafeteria;
 Clothing

Sister Marie Anthony



SCHOOL KITCHEN AND CAFETERIA
Where tempting dishes are prepared and enjoyed.

SILVER YEARS

1917 - 1942

On Tuesday, June ninth, the Right Reverend William F. Bergan, Chancellor and Pastor of Saint Monica's Parish; the Reverend Harry J. Doerbecker, Pastor of St. Mary's Church, Geneseo; The Reverend George M. Kalb, Pastor of Holy Trinity Church, Webster and the Reverend Francis W. Luddy, Pastor of Our Lady of Lourdes Parish will complete twenty-five years in the service of the King.

We at Nazareth congratulate these four priests on their splendid contribution to religion through the years and we pray for them many added years of fruitful service.

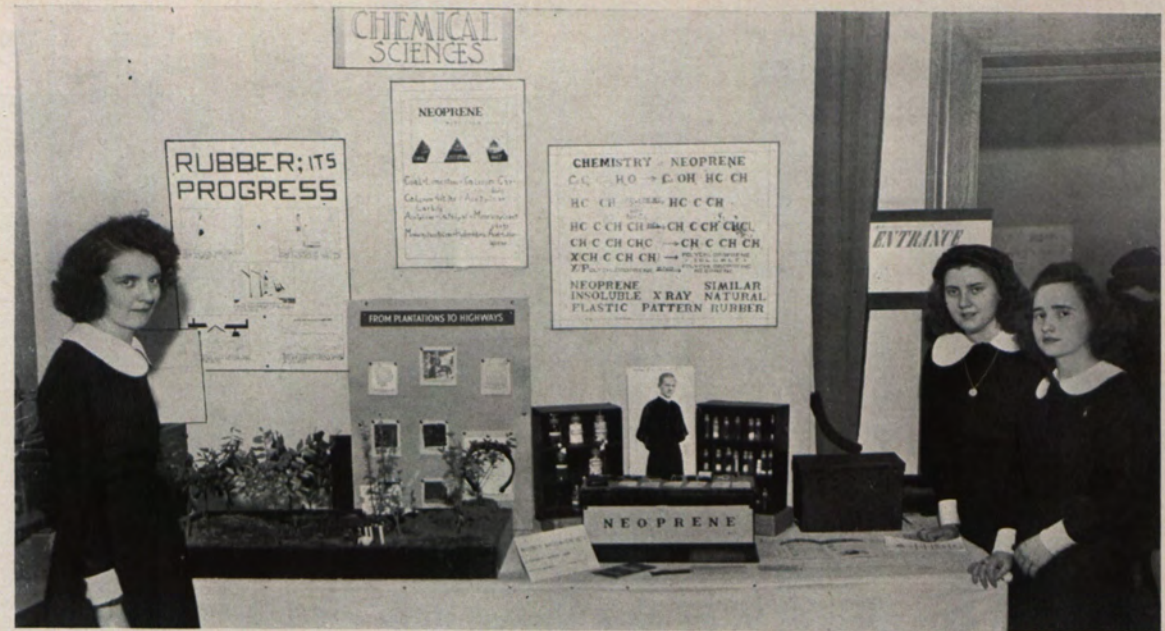
For our Chancellor, Monsignor Bergan, we voice special appreciation. Quietly and consistently he has aided us by his advice, his sincere commendation; his deep interest in Nazareth's ever project. His presence at our various programs throughout the years has lent no small amount of encouragement to performers as well as to those behind the scenes. For all that he has done to gladden the days at Nazareth we are heartily grateful.

*To our four Jubilarians, Friends of Nazareth,
Ad Multos Annos!*



Above: A corner of the Chemistry Laboratory.

Below: A view of the Biology Lecture Room.



The Nieuwland Chemistry Club won second prize in the chemistry section of the Third Annual Science Fair. It developed the story of rubber, and fitly featured the Reverend Julius Nieuwland, C.S.C. and his invention of Neoprene, synthetic rubber. Father Nieuwland was in charge of the School of Chemistry at Notre Dame when Sister Geraldine, moderator of the Club, was taking graduate work in Chemistry at the University.

Science—Handmaid of Religion

SISTER MARTINA MARIE
*General Biology,
General Science*

SISTER M. GERALDINE
*Chemistry,
General Science*



Nazareth Academy Adds Instruction in Dancing to its Curriculum



Miss Heinrich gives a lesson in foot position while the students look on in deep interest.



A student demonstration of the above lesson.

"The purpose of dancing is to secure perfect grace of motion."

Miss Nan Heinrich joined the Faculty of Nazareth Academy this year and has given two lessons each week in ballroom dancing. The classes are composed of young ladies of Nazareth Academy and young men of Aquinas Institute. The progress made in its first year commends the continuance of dancing as a study.



Nazareth Academy Varsity Basketball Team, 1941-1942

Left to right:

1ST ROW: Mildred Okolowicz, Manager; Jean Pixley, Mary Doran, Dorothy Burkard, Claire Block, Sylvia Tiernan, Rita Birecree, Score Keeper.
 2ND ROW: Shirley Mallet, Madeline Cook, Catherine Foley, Elizabeth Heisinger, Helen Mary Bauman, Margaret Pritchard, Geraldine McMahon.

FORWARDS

CLAIRE BLOCK '42
 MADELINE COOK '42
 MARY DORAN '42
 BETTY HEISINGER '42
 JEAN PIXLEY '42
 SYLVIA TIERNAN '42

GUARDS

HELEN MARY BAUMAN '42
 DOROTHY BURKARD '42
 CATHERINE FOLEY '42
 SHIRLEY MALLET '42
 GERALDINE MCMAHON '43
 MARGARET PRITCHARD '42

GAMES PLAYED

Jan. 16	Academy	14	Alumnae, N. A.	38
Jan. 23	Academy	25	Nazareth College Freshmen	20
Jan. 29	Academy	23	Harley	19
Jan. 30	Academy	34	St. Jerome's, East Rochester	32
Feb. 7	Academy	34	Alumnae, N. A.	28
Feb. 13	Academy	48	St. Jerome's, East Rochester	8
Feb. 19	Academy	52	Sequoia	19
Feb. 25	Academy	22	Harley	14
Mar. 4	Academy	34	Sacred Heart	30
Mar. 13	Academy	26	Mercy High	15
Mar. 18	Academy	17	Sacred Heart	18
Apr. 24	Academy	25	Alumnae, N. A.	24
May 1	Academy	25	Mercy High	18

Total games played—13; Wins—11; Losses—2



MRS. MARION BAPTISTE BENSON—Physical Education

MRS. TERESA BLOCK—Pianist, Physical Education

GRADUATE DIRECTORY

NAME	ADDRESS	PARISH	ACTIVITIES
MARY G. ACKROYD	20 Oscar St.	Our Lady of Perpetual Help	Dramusical; Perosian Choir 1, 2, 3, 4; Bellarmine Club; Red Cross; Sodality.
CATHERINE D. AIELLO	180 Empire Blvd.	St. Ambrose	Le Cercle Français 3, 4; Perosian Choir 1, 2, 3; Bellarmine Club; Dramusical 2, 3; Sodality.
BERYL E. ANDRUS	109 Macbeth St.	Blessed Sacrament	Mendel Club 3; Bellarmine Club; Nieuwland Club; Sodality.
FLORENCE R. AUER	100 Rau St.	St. Margaret Mary	Science Club 1, 2, 3; Perosian Choir 1, 2; Bellarmine Club 3, 4; Sodality.
MARY A. AULENBACHER	462 Clay Ave.	Sacred Heart	Bellarmine Club; Science Club 1; Sodality.
MARY LOUISE BARBATI	26 Saratoga Ave.	St. Patrick	Louis Pasteur Club; Le Cercle Français; Bellarmine Club; Sodality.
JEANNE L. BARKER	175 Lehigh Ave.	Our Lady of Good Counsel	Le Cercle Français 3; Nieuwland Club 3; Mendel Club 4; Bellarmine Club; Gabriel Staff; Circulation Manager 4; Louis Pasteur Club 1; Sodality.
ANNAMAY H. BARROW	782 Norton St.	Our Lady of Perpetual Help	Christmas Play 3; Der Deutsche Verein 3, 4; Bellarmine Club; Watch Parade Winner; Sodality; Senior Play.
ARLENE M. BASCH	East Main St., Webster, N. Y.	Holy Trinity	Perosian Choir 1, 2, 3, 4; Christmas Play 2; Dramusical 4; Sodality.
DIANA C. BATTAGLIA	189 Allen St.	St. Patrick	Bellarmine Club 3, 4; Louis Pasteur Club; Sodality.
HELEN MARY BAUMAN	316 Lake View Pk.	Holy Rosary	Perosian Choir 1, 2, 3, 4; Dramusical 2, 3, 4; Basketball; Nieuwland Club; Bellarmine Club; President of Senior Class; Sodality.
AUDREY M. BAUMANN	941 Dewey Ave.	Holy Rosary	Junior Red Cross; Bellarmine Club; Science Club; Sodality.
WILNA M. BEEMAN	43 Hermitage Rd.	St. Thomas	Perosian Choir 1, 2, 3, 4; Le Cercle Français 3, 4; Dramusical 3, 4; Nieuwland Club 3; Bellarmine Club; Christmas Play 3; Sodality.
BERNICE E. BEIERSCHMITT	129 Wetmore Pk.	Holy Apostles	Bellarmine Club; Commercial Honor Society; Sodality.
JOSEPHINE J. BELLANCA	303 Allen St.	SS. Peter & Paul	Science Club; Bellarmine Club; Sodality.
PAULETTE P. BIELLE	21 Rowley St.	Blessed Sacrament	Le Cercle Français; Bellarmine Club; Sodality.
RITA H. BIRECREE	507 Augustine St.	Holy Rosary	Bellarmine Club; Basketball Manager; Sodality.
CLAIRE T. BLOCK	131 Curtice Rd.	St. Margaret Mary	Bellarmine Club; Basketball; Sodality.
LILY MAY BLUM	R. D. 1, Atlantic Ave. East Rochester	St. John Evangelist	Bellarmine Club; Sodality.
LOTTIE A. BOJARA	1456 North St.	St. Stanislaus	Louis Pasteur Club; Le Cercle Français; Mendel Club; Nieuwland Club; Bellarmine Club; Sodality.

GRADUATE DIRECTORY

NAME	ADDRESS	PARISH	ACTIVITIES
HELEN M. BOPP	41 Herald St.	Holy Redeemer	Louis Pasteur Club; Mendel Club; Senior Play; Nieuwland Club; Perosian Choir 1, 2; Dramusical 1; Bellarmine Club; Sodality.
SARAH E. BRASSER	275 Titus Ave.	St. Margaret Mary	Perosian Choir 1; Dramusical 1; Nieuwland Club 3; Bellarmine Club; Sodality; Chairman, Our Lady's Committee.
CHARLOTTE M. BROWN	230 Sherwood Ave.	St. Augustine	Bellarmine Club; Louis Pasteur Club; Junior Red Cross; Sodality.
DOROTHY C. BURKARD	708 Frost Ave.	SS. Peter & Paul	Science Club; Louis Pasteur Club; Basketball; Bellarmine Club; Commercial Honor Society 3, 4; Sodality.
WILMA R. BURKE	1 Eldorado Pl.	Sacred Heart	Orchestra; Bellarmine Club; Sodality.
JESSIE ANN BUTLER	697 Post Ave.	Our Lady of Good Counsel	Le Cercle Français 3, 4; Christmas Play 3; Nieuwland Club 3; Lanthorn Board 4; Bellarmine Club; Sodality.
PHYLLIS CAMPANELLA	1086 Clifford Ave.	Holy Redeemer	Bellarmine Club; Nieuwland Club; Sodality.
JEAN LOIS CANNAN	167 Burrows St.	Holy Apostles	Perosian Choir 1, 2; Christmas Play 3, 4; Louis Pasteur Club; Bellarmine Club; Dramusical 2; Senior Play; Sodality.
CLARA M. CAPOBIANCO	456 Emerson St.	Holy Rosary	Bellarmine Club; Louis Pasteur Club; Sodality.
MARY ELIZABETH CARCELLI	495 Electric Ave.	Sacred Heart	Christmas Play 3; Bellarmine Club; Mendel Club; Nieuwland Club; Senior Play; Sodality.
LORRAINE A. CASEY	96 Curtis St.	Holy Rosary	Bellarmine Club; Sodality.
LUCILLE CASPER	21 Prescott St.	St. Augustine	Bellarmine Club; Sodality.
DORIS CHRISTIE	93 Glendale Pk.	Holy Rosary	Commercial Honor Society; Sodality.
MARGARET H. CHRISTMAN	113 Parkside Cres.	St. Margaret Mary	German Club 2, 3; Bellarmine Club; Perosian Choir 1, 2, 3, 4; Dramusical 1, 2; Mendel Club 3; Sodality.
VIRGINIA A. COLBURN	78 Campbell Pk.	Holy Apostles	Mendel Club; Dramusical 2; Red Cross; Perosian Choir 1, 2, 3, 4; Bellarmine Club; Sodality.
DORETTE J. COLLINS	87 Montaine Pk.	St. Thomas	Bellarmine Club; Commercial Honor Society; Sodality.
MADÉLINE T. COOK	4 Broezel St.	Holy Rosary	Basketball 3, 4; Bellarmine Club; Red Cross; Louis Pasteur Club; Sodality.
MARY JANE CORCORAN	805 Ridgeway Ave.	Sacred Heart	Le Cercle Français 3; Bellarmine Club; Sodality.
FLORENCE M. CORNELIUS	246 Springfield Ave.	St. Ambrose	Bellarmine Club; Gabriel Staff; Sodality.
MARY ANN CROWLEY	80 Belleclaire Dr.	St. Thomas	Bellarmine Club; Louis Pasteur Club; Sodality.
VICTORIA D'ALESSANDRO	595 Smith St.	St. Anthony	Le Cercle Français; Bellarmine Club; Red Cross; Sodality.
MARY ESTHER DANEHY	911 Dewey Ave.	Holy Rosary	Christmas Play 1, 2, 3, 4; Perosian Choir 1, 2, 3, 4; Lanthorn Board; Le Cercle Français 3, 4; Dramusical 1, 2, 3, 4; Sodality.

GRADUATE DIRECTORY

NAME	ADDRESS	PARISH	ACTIVITIES
ELEANOR R. DEL VECCHIO	415 Jay St.	SS. Peter & Paul	Perosian Choir 1, 2, 3, 4; Le Cercle Français 3, 4; Bellarmine Club 3, 4; Dramusical 2; Sodality.
ELIZABETH A. DEL VECCHIO	251 Parkway	St. Anthony	Bellarmino Club; Science Club; Sodality.
MARY E. DENNIS	130 Goodwill St.	Sacred Heart	Bellarmino Club; Sodality.
ALBERTA T. DE RITIS	201 Rugby Ave.	St. Augustine	Le Cercle Français; Louis Pasteur Club; Perosian Choir; Dramusical; Bellarmine Club; Sodality.
MARGARET H. DEVERELL	78 Devon Rd.	Our Lady of Good Counsel	Louis Pasteur Club; Le Cercle Français 3; Nieuwland Club; Bellarmine Club; Mendel Club; Sodality Apostolic Committee, Chairman.
CATHERINE R. DIETRICH	3033 Ridge Rd.	St. John	Bellarmino Club; Orchestra 2, 3; Mantuan Club 4; Le Cercle Français 3; Science Club; Senior Play; Sodality.
HELEN A. DODD	107 Burlington Ave.	Our Lady of Good Counsel	Bellarmino Club; Red Cross; Mendel Club; Louis Pasteur Club; Nieuwland Club; Sodality.
CATHERINE R. DONOVAN	662 Seward St.	St. Monica	Bellarmino Club; Mantuan Club; Red Cross; Senior Play; Le Cercle Français; Sodality.
MARJORIE M. DONOVAN	191 Thorncliffe Dr.	St. Thomas	Bellarmino Club; Science Club; Sodality.
ANNE M. DORAN	510 Electric Ave.	Sacred Heart	Orchestra 1, 2, 3, 4; Le Cercle Français 3, 4; Bellarmine Club; Sodality; Lanthorn Staff; Christmas Play 3; Senior Play.
MARY R. DORAN	129 Hoover Rd.	St. Margaret Mary	Basketball; Bellarmine Club; Freshman Science Club; Biology Club; Choir and Dramusical 2, 3.
MARION G. DORKEY	226 Curtis St.	Holy Rosary	Bellarmino Club; Handmaid of the Blessed Sacrament; Sodality.
RITA G. DOWLING	182 Sherwood Ave.	St. Augustine	Bellarmino Club; Mendel Club; Nieuwland Club; Sodality.
MARY J. DUIGNAN	15 Lakeview Ter.	Holy Rosary	Bellarmino Club; Sodality.
DOROTHY F. EIFFERT	195 Aberdeen St.	St. Monica	Louis Pasteur Club; Perosian Choir; Der Deutsche Verein; Mendel Club 3; Bellarmine Club; Nieuwland Club; Sodality.
JEAN R. ENGLERT	28 Rialto St.	Our Lady of Perpetual Help	Bellarmino Club; Sodality.
AGNES G. ERBLAND	311 Pierpont St.	Holy Rosary	German Club; Bellarmine Club; Nieuwland Club; Choir and Dramusical 2, 3; Sodality.
ALICE C. ERBLAND	311 Pierpont St.	Holy Rosary	Perosian Choir; Bellarmine Club; German Club; Nieuwland Club; Dramusical 3; Sodality.
RUTH M. FALLIS	9 Payne St.	St. Bridget	Bellarmino Club; Sodality; Choir, Dramusical 2, 3.
RUTH M. FARRELL	386 Portland Ave.	Holy Redeemer	Bellarmino Club 3, 4; Lanthorn Board; Perosian Choir; Dramusical 3, 4; Christmas Play 3; Sodality.

GRADUATE DIRECTORY

NAME	ADDRESS	PARISH	ACTIVITIES
THELMA M. FEENEY	215 Chalford Rd.	Holy Cross	Perosian Choir 1, 2, 3, 4; Dramusical 2, 4; Bellarmine Club; Lanthorn Board; Sodality.
ANN A. FERKANIN	488 Colvin St.	Holy Family	Bellarmino Club; Sodality.
PAULINE A. FILIPPONE	1257 Lexington Ave.	Holy Rosary	Louis Pasteur Club; Nieuwland Club; Mendel Club; Le Cercle Français; Dramusical 3; Perosian Choir 1, 2, 3; Bellarmine Club; Sodality.
ROSEMARY H. FINCH	249 Longacre Rd.	St. Margaret Mary	Le Cercle Français; Louis Pasteur Club; Mendel Club; Nieuwland Club; Sodality; Bellarmine Club.
DORIS ANNE FLAHERTY	3430 Culver Rd.	St. Margaret Mary	Bellarmino Club; Le Cercle Français 3, 4; Louis Pasteur Club; Mendel Club; Christmas Play 3, 4; Sodality, Catholic Literature Committee, Chairman.
MARY E. FLAHERTY	56 Pomeroy St.	St. Andrew	Mendel Club; Bellarmine Club; Der Deutsche Verein; Nieuwland Club; Sodality.
EDNA MAE FLEMING	42 Evergreen St.	St. Bridget	Commercial Honor Society; Bellarmine Club; Louis Pasteur Club; Sodality.
ANN P. FOLEY	443 Flower City Pk.	Sacred Heart	Bellarmino Club; Sodality.
CATHERINE FOLEY	595 Wellington Ave.	St. Monica	Basketball Team; Christmas Play 4; Lanthorn Staff; Bellarmine Club; Sodality; Senior Play.
ROSEANNE B. FORWARD	57 Presque St.	St. John the Evangelist	Le Cercle Français; Bellarmine Club; Red Cross; Sodality.
MARY LOUISE FRANK	28 Lee Pl.	Immaculate Conception	Bellarmino Club; Sodality.
ADELE M. FUCHS	164 Inglewood Dr.	St. Augustine	Bellarmino Club; Sodality.
JANE A. GAFFNEY	141 Thorndyke Rd.	St. Margaret Mary	Christmas Play 4; Bellarmine Club; Lanthorn Staff; Red Cross; Sodality.
RITA M. GANTERT	310 Winona Blvd.	St. Margaret Mary	Bellarmino Club; Sodality.
EDNA G. GESSNER	195 West Ave.	Holy Family	Science Club; Red Cross; Bellarmine Club; Louis Pasteur Club; Sodality.
DORIS ROSE GIEBEL	460 Avenue A	St. Michael	Bellarmino Club; Le Cercle Français; Lanthorn Staff; Sodality.
ELEANOR M. GOSNELL	101 Milton St.	Our Lady of Good Counsel	Bellarmino Club; Nieuwland Club; Sodality.
JEANNE R. GRANGER	169 Penhurst St.	St. Augustine	Bellarmino Club; Perosian Choir; Sodality; Dramusical 3.
NORINE GRUE	149 Barton St.	St. Monica	Le Cercle Français 2; Mendel Club, President, Perosian Choir; Bellarmine Club; Sodality, Social Committee, Chairman.
CORINNE R. HAERING	226 Linden St.	St. Boniface	German Club; Bellarmine Club; Nieuwland Club; Sodality; Orchestra.
JANE F. HANNA	767 Frost Ave.	St. Augustine	Perosian Choir 2, 3; Nieuwland Club; Mendel Club; Dramusical 3; Gabriel Staff; Louis Pasteur Club; Sodality.

GRADUATE DIRECTORY

NAME	ADDRESS	PARISH	ACTIVITIES
MARION P. HART	210 Rugby Ave.	St. Augustine	Christmas Play 3, 4; Bellarmine Club; Sodality Committee Chairman.
FRANCES H. HAYES	124 Burlington Ave.	Our Lady of Good Counsel	Christmas Play; Sodality Play; Nieuwland Club; Bellarmine Club; Lanthorn Staff; Le Cercle Français; Dramusical 2, 3, 4; Perosian Choir 1, 2, 3, 4; Sodality; Senior Play.
FRANCES J. HEARNS	143 Glendale Pk.	Holy Rosary	Nieuwland Club; Le Cercle Français; Mendel Club; Bellarmine Club; Sodality.
KATHERINE M. HEFFERNAN	1077 Bay St.	St. Ambrose	Bellarmino Club; Nieuwland Club; Le Cercle Français; Perosian Choir 1, 2, 3; Senior Play Reading Committee; Sodality.
ELIZABETH ANN HEISINGER	3542 St. Paul Blvd.	St. Margaret Mary	Basketball Team; Red Cross; Lanthorn Staff; Sodality; Bellarmine Club.
JEAN M. HENNESSY	468 Hayward Ave.	Corpus Christi	Bellarmino Club; Dramusical; Perosian Choir; Sodality.
MARION C. HIGGINS	501 Ravenwood Ave.	St. Augustine	Perosian Choir 1, 2, 3, 4; Dramusical 2, 3, 4; Bellarmine Club; Nieuwland Club; Louis Pasteur Club; Sodality.
RITA M. HILL	42 Sherwood Ave.	St. Augustine	Sodality; Bellarmine Club.
MARJORIE H. HOFMANN	25 Canton St.	Holy Trinity	Sodality; Dramusical 3; Perosian Choir 3, 4; Bellarmine Club.
KATHERINE R. HOGAN	45 Pollard Ave.	Holy Cross	Sodality; Bellarmine Club.
FLORA HOSENFELD	42 Washburn Pk.	St. Boniface	Bellarmino Club; Sodality.
DOLORES B. HUETHER	1239 Lexington Ave.	Holy Rosary	Bellarmino Club; Commercial Honor Society; Sodality.
ROSEMARY C. HUNT	498 Emerson St.	Holy Apostles	Sodality; Perosian Choir; Dramusical 2, 3; Bellarmine Club; Red Cross 4; Louis Pasteur Club.
JEAN JACKSON	69 Cheltenham Rd.	Sacred Heart	Christmas Play 3; German Club 1; Perosian Choir 2; Bellarmine Club; Sodality Play 2.
MARY IRENE JOHNSON	1873 Stone Rd.	St. John the Evangelist	Sodality; Bellarmine Club; Red Cross.
JEANNE M. JOST	140 Oriole St.	Holy Rosary	Sodality; Lanthorn Staff; French Club 3, 4.
LORRAINE M. KEADY	245 Curtis St.	Holy Rosary	Sodality; Bellarmine Club; First Aid.
MARY M. KEENAN	215 Fulton Ave.	Sacred Heart	Christmas Play 3; Commercial Honor Club; Bellarmine Club.
MARY M. KEENAN	126 Mulberry St.	St. Boniface	Sodality; German Club; Bellarmine Club; Mendel Club.
ELEANOR M. KERN	111 Vermont St.	St. Ambrose	Sodality; Bellarmine Club; Perosian Choir.
RITA J. KESTER	16 Columbia Ave.	Immaculate Conception	Sodality; Bellarmine Club; Commercial Honor Society.
HELEN M. KLEM	2213 Ridge Rd. West	St. John the Evangelist	Bellarmino Club; Commercial Honor Society; Christmas Play 4; Sodality; Choir; Dramusical 3.

GRADUATE DIRECTORY

NAME	ADDRESS	PARISH	ACTIVITIES
GERALDINE A. KNAPP	51 Trafalgar St.	St. Monica	Perosian Choir; Lanthorn Staff; French Club 3, 4; Bellarmine Club; Sodality.
KATHLEEN M. KOHLMAN	479 Birr St.	Holy Rosary	Choir 1, 2, 3; Sodality; News Editor, Gabriel; French Club 3, 4.
MARIAN A. KRAFT	177 Willis Ave.	St. Charles	Sodality; Newman Club; Bellarmine Club; Mantuan Circle; Christmas Play 3.
JOSEPHINE M. LACAGNINA	12 Siebert Pl.	St. Michael	Bellarmino Club; Sodality.
BETTY L. LANDRY	244 Denver St.	St. Ambrose	Sodality; Bellarmine Club; Commercial Honor Society.
MARY ANNE LANE	118 Gregory Hill Dr.	Old St. Mary's	Sodality; French Club 3, 4; Bellarmine Club; Mantuan Circle 3; Christmas Play 3, 4; Senior Play Committee.
MARY A. LANZALACO	120 Stenson St.	Most Precious Blood	French Club; Bellarmine Club; Sodality; First Aid.
PATRICIA M. LARAGY	15 Milbank St.	St. Monica	Sodality; Bellarmine Club; First Aid.
LOIS L. LEGG	80 Flower St.	St. Michael	Bellarmino Club; Nieuwland Club; Mendel Club; Sodality.
MARY J. LEONE	2625 Dewey Ave.	St. Charles	Bellarmino Club; Sodality.
MARGARET A. LEWIS	102 Ravenwood Ave.	Our Lady of Good Counsel	Sodality; Sodality Play; Nieuwland Club; Bellarmine Club; Vice-President, Senior Class; Mendel Club; Perosian Choir; Dramusical 1; Christmas Play 3.
ARLENE G. LINK	24 Turner St.	St. Augustine	Sodality; Bellarmine Club; Junior Red Cross.
RITA MARIE LOCKWOOD	2367 St. Paul Blvd.	St. Margaret Mary	Sodality; Bellarmine Club.
JOAN LOEWENGUTH	62 Alliance Ave.	Blessed Sacrament	Christmas Play 4; Bellarmine Club; Sodality.
MARY LOMBARDO	6 Eighth St.	St. Francis Xavier	Sodality; Mantuan Club; French Club; Bellarmine Club; Christmas Play 3, 4.
MICHAELA A. LOMEDICO	142 Verona St.	St. Patrick	Bellarmino Club; Commercial Honor Society.
KATHERINE J. LOWER	569 Sawyer St.	Our Lady of Good Counsel	Bellarmino Club; Sodality; Junior Red Cross.
MARJORIE J. LYNCH	104 Albemarle St.	Sacred Heart	Perosian Choir; Sodality; Basketball; Bellarmine Club; Dramusical 3.
SHIRLEY A. MALLET	2330 Clinton Ave. N.	St. Margaret Mary	Dramatics; Basketball; Red Cross; French Club.
MARGARET MARY MALOY	50 Irvington Rd.	St. Anne	Christmas Play 3; Dramatic 2, 3; Bellarmine Club; Red Cross; Sodality.
BETTY M. MARCHNER	93 Somershire Dr.	St. Margaret Mary	Mendel Club; Sodality; Bellarmine Club.
JOANNE M. MARCILLE	75 Glasgow St.	Immaculate Conception	Bellarmino Club; French Club 3; Sodality.
DARINA G. MARINUCCI	83 Lakeland Ave.	Holy Cross	Bellarmino Club; Sodality.
YOLANDA A. MASI	498 St. Paul St.	St. Michael	Sodality; Mendel Club; Bellarmine Club.

GRADUATE DIRECTORY

NAME	ADDRESS	PARISH	ACTIVITIES
JEANNE F. McCABE	45 South Main St.	St. Louis	Sodality; French Club 3, 4; Bellarmine Club; Perosian Choir 1, 2, 3, 4; Nieuwland Club 3; Dramusical 2, 3.
MARY C. McCARTHY	102 Elba St.	St. Monica	Perosian Choir 1, 2, 3, 4; Dramusical 2, 3, 4; Bellarmine Club; Sodality.
NORMA T. McCARTHY	317 Birr St.	Holy Rosary	Bellarmino Club; Basketball 3; Sodality.
RUTH M. McCARTHY	317 Birr St.	Holy Rosary	Sodality; Bellarmine Club; Commercial Honor Society; Basketball 3.
BEVERLY J. McCONNELL	711 Flower City Pk.	Sacred Heart	Orchestra; Bellarmine Club; Perosian Choir; French Club; Sodality.
WILMA M. McCORMICK	45 Cameron St.	Holy Apostles	Sodality; French Club 3; Bellarmine Club 3, 4; Chemistry Club 4.
KATHLEEN A. McDONALD	633 Post Ave.	Our Lady of Good Counsel	Bellarmino Club; Senior Play; Sodality.
MARY T. McGRATH	88 Prince St.	Corpus Christi	Sodality; Bellarmine Club.
ROBERTA H. McGRATH	205 Flower City Pk.	Sacred Heart	Sodality; Perosian Choir 1, 2, 3; Mendel Club; Nieuwland Club; Bellarmine Club; German Club 2, 3.
ANNE M. McHENRY	27 Champlain St.	Immaculate Conception	Sodality; Mendel Club; Bellarmine Club; Lanthorn Staff; Nieuwland Club; Red Cross.
PATRICIA J. McKENNA	183 Barton St.	St. Monica	Bellarmino Club; Sodality.
MARY MARGARET McMAHON	144 Maxwell Ave.	St. Monica	Sodality; French Club 3; Nieuwland Club; Mendel Club; Bellarmine Club; Lanthorn Staff.
MARGARET J. McWHINNEY	351 Augustine St.	Holy Rosary	Sodality; Bellarmine Club.
ROSA MARIE MEHR	307 Driving Park Ave.	Holy Rosary	Choir; German Club; French Club; Bellarmine Club; Vice-President of German Club.
MARGUERITE M. MENSING	25 Virginia Ave.	Our Lady of Good Counsel	French Club 3; Bellarmine Club; Sodality.
ENES M. MERCURY	91 Arnett Blvd.	St. Monica	Sodality; Bellarmine Club.
RUTH A. MEYERING	245 Norton St.	Our Lady of Perpetual Help	German Club 2, 3; Bellarmine Club; Mantuan Club 4; Mendel Club 3; Orchestra 4; Nieuwland Club 4; Sodality.
JEANNE MARIE MICHAUD	143 Lincoln St.	Holy Redeemer	Sodality; French Club; Bellarmine Club 3, 4; Christmas Play 3, 4; Senior Play.
ADELAIDE R. MIDNIGHT	85 Roseview Ave.	St. Ambrose	Sodality; Dramusical 2, 3; Choir 1, 2, 3, 4; French Club; Bellarmine Club; Mendel Club; Nieuwland Club; Christmas Play 2, 3; Red Cross.
BETTY E. MILLER	202 Flower City Pk.	Sacred Heart	Sodality; French Club; Bellarmine Club.
FLORENCE R. MILLER	375 Raines Pk.	Sacred Heart	Lanthorn Staff; Bellarmine Club; French Club.
MARGARET M. MILLER	55 Grover St.	St. Augustine	Sodality; Bellarmine Club.
VIRGINIA A. MINOIA	1092 Clifford Ave.	Holy Redeemer	Sodality; Bellarmine Club; Mendel Club.

GRADUATE DIRECTORY

NAME	ADDRESS	PARISH	ACTIVITIES
JANE E. MULLIGAN	123 Aberdeen St.	St. Monica	Sodality; French Club, Treasurer; Choir 3, 4; Dramusical 4; Nieuwland Club; Bellarmine Club; Lanthorn, Editor-in-Chief.
MARY K. MURPHY	235 Bryan St.	Holy Rosary	Sodality; Editor of Gabriel; Bellarmine Club; Red Cross; Senior Play 4.
LORAIN M. MYERS	1057 Winona Blvd.	St. Thomas	Sodality; Nieuwland Club 3; Bellarmine Club.
MARIAN A. NOLL	994 Clifford Ave.	Holy Redeemer	Sodality; Commercial Honor Society; Bellarmine Club; Editor, "Gabriel."
FRANCES E. O'BRIEN	289 Flower City Pk.	Sacred Heart	Sodality; Mendel Club; Nieuwland Club; Bellarmine Club; Choir 1, 2, 3, 4; Christmas Play 2, 3; Dramusical 2, 3, 4.
JEANNE M. O'BRIEN	86 Clay Ave.	Sacred Heart	Bellarmino Club; Le Cercle Français; Sodality.
MARGARET MARY O'CONNOR	37 Nelson St.	Blessed Sacrament	Sodality; Mendell Club; Bellarmine Club; Dramusical 1, 2, 3, 4; Choir 1, 2, 3, 4.
MILDRED F. OKOLOWICZ	214 Weaver St.	St. Stanislaus	Senior Play; Chairman of Dramatic Committee; Bellarmine Club; Sodality Play 2; Nieuwland Club; Christmas Play 3, 4; Scorekeeper, Basketball team, 3, 4.
MARY T. OLIVER	166 Milburn St.	Blessed Sacrament	Sodality; Bellarmine Club; Le Cercle Français; Nieuwland Club.
MARGARET C. O'NEILL	199 Wellington Ave.	St. Augustine	Sodality; Choir 2; Dramusical; Nieuwland Club; Mendel Club; Bellarmine Club; Louis Pasteur Club.
PALMA D. PALOZZI	112 Stenson St.	Precious Blood	Le Cercle Français; Mendel Club; Bellarmine Club; Nieuwland Club; Sodality.
VIOLA J. PAVIA	153 Myrtle St.	Holy Apostle	Science Club; French Club 2; Nieuwland Club; Bellarmine Club; Mendel Club; Red Cross.
ROSEMARY N. PEARTREE	86 Elmtree Rd.	Sacred Heart	Sodality; Mendel Club; Red Cross; Nieuwland Club; Bellarmine Club; Christmas Play; Dramusical 2, 3, 4; Choir 1, 2, 3, 4.
CONCETTA L. PETIX	31 Bismark Ter.	St. Michael	Sodality; Le Cercle Français; First Aid; Bellarmine Club; Louis Pasteur Club.
JEAN M. PIXLEY	6 Finch St.	Holy Rosary	Basketball; Bellarmine Club; Perosian Choir; Dramusical; Sodality; Commercial Club; Senior Play 4.
NANCY A. PONTARELLI	78 Bartlett St.	Immaculate Conception	Sodality; Louis Pasteur Club; Bellarmine Club.
NORMA A. PREDMORE	596 Birr St.	Holy Rosary	Choir 1, 2, 3; Dramusical 1, 2, 3; Louis Pasteur Club; Mendel Club; Nieuwland Club.
ALICE M. PRESNAL	450 Carter St.	St. Stanislaus	Bellarmino Club; Choir 2, 3, 4; Dramusical 2, 3, 4; Sodality; Commercial Honor Society.

GRADUATE DIRECTORY

NAME	ADDRESS	PARISH	ACTIVITIES
MARGARET H. PRITCHARD	616 Seneca Rd.	St. Salome	Louis Pasteur Club; Le Cercle Français; Bellarmine Club; Christmas Play 3, 4; Gabriel Staff; Basketball; Red Cross; Sodality.
ELVIRA T. PUCILLO	198 Dewey Ave.	St. Anthony	Bellarmino Club; Sodality; Commercial Club.
CHRISTINA T. RADTKE	34 Cheltenham Rd.	Sacred Heart	Choir 3, 4; Dramusical 3, 4; Commercial Honor Society; German Club; Sodality.
DOROTHY A. RAKOWSKI	98 Atkinson St.	Immaculate Conception	Sodality; German Club; Mantuan Club; Bellarmine Club; Senior Play.
HELEN C. RAUBER	19 Tyler St.	St. Margaret Mary	Sodality; Louis Pasteur Club; Choir 1, 2; Nieuwland Club; Red Cross; Choir and Dramusical 3; Treasurer of Senior Class; Senior Play 4.
KATHLEEN G. RIDLEY	34 Moulson St.	Our Lady of Perpetual Help	Sodality; Nieuwland Club; Mendel Club; Le Cercle Français; Red Cross; Bellarmine Club; Senior Play; Christmas Play 3.
JOSEPHINE M. RIEDMAN	13 King St.	SS. Peter & Paul	Sodality; German Club; Bellarmine Club; Lanthorn Artist.
MARION E. ROCHE	112 Northview Ter.	Our Lady of Perpetual Help	Sodality; Nieuwland Club; Bellarmine Club; Louis Pasteur Club; Le Cercle Français; Christmas Play 3.
MARY HELEN RONAN	74 Parkdale Ter.	Sacred Heart	Bellarmino Club; Commercial Honor Society; Sodality.
WILMA I. ROTH	537 Lexington Ave.	Holy Rosary	Sodality; Treasurer of Commercial Club 3; President of Commercial Club 4; Exchange Editor of Gabriel.
MARY VIRGINIA ROUSE	3 Birch Cres.	Corpus Christi	Christmas Play 3; Choir; Sodality; Operetta; Nieuwland Club; Bellarmine Club; Science Club; Sodality Play 2; Lanthorn Staff.
DORIS M. RUFF	145 Masseth St.	Holy Family	Bellarmino Club; Commercial Honor Society; Sodality; Choir and Dramusical 2, 3, 4.
MARY H. RUSSELL	201 Scottsville Rd.	St. Monica	Sodality; Lanthorn Staff; Le Cercle Français; Bellarmine Club; Christmas Play 3, 4; Choir.
CLAIRE E. RUSSER	59 Appleton St.	St. Augustine	Bellarmino Club; Sodality; Chairman of Mission Committee.
BETTY ANNE RYAN	85 Charlton Rd.	St. Margaret Mary	Senior Play; Bellarmine Club; Mantuan Club; Sodality; Choir; Christmas Play 3, 4; Senior Class Secretary.
MARY E. RYAN	567 Flower City Pk.	Sacred Heart	Bellarmino Club; Sodality; Louis Pasteur Club; Nieuwland Club; Senior Play.
MARY JANE RYAN	85 Charlton Rd.	St. Margaret Mary	Bellarmino Club; Prefect of Sodality; Choir 1.
MADELINE A. SACCO	345 Avenue B	St. Michael	Sodality; Louis Pasteur Club; Bellarmine Club; Gabriel Staff; First Aid.
MARGARET A. SALBER	289 Remington St.	Our Lady of Perpetual Help	Sodality; Louis Pasteur Club; Bellarmine Club; Choir and Dramusical 2, 3, 4.

GRADUATE DIRECTORY

NAME	ADDRESS	PARISH	ACTIVITIES
VIRGINIA M. SCHAEFFER	398 Lake View Pk.	Holy Rosary	Sodality; Bellarmine Club; Choir 2, 3, 4; Commercial Honor Society; Dramusical 3, 4.
MARIE C. SCHIEBLE	31 Cayuga St.	St. Boniface	Mendel Club; Nieuwland Club; Bellarmine Club; Orchestra 2, 3, 4; Sodality; Chairman of Eucharistic Committee.
JEANETTE E. SCHMERBECK	1047 Clinton Ave. N.	St. Michael	Sodality; Choir 1, 2, 3; Dramusical; Bellarmine Club; Commercial Club; Orchestra 1, 2, 3, 4.
VERONICA A. SCHMIDT	66 Agnes St.	Our Lady of Victory	Bellarmino Club; Choir 2, 3; Science Club; Dramusical; Sodality.
ELIZABETH M. SCHOEPS	168 Merlin St.	Holy Rosary	Sodality; Choir 3, 4; Bellarmine Club.
DOROTHY E. SCHREIBER	127 Evergreen St.	St. Michaels	Sodality of Our Lady; Bellarmine Club.
FRANCES SHANNON	78 Brookdale Ave.	Our Lady of Good Counsel	Bellarmino Club; Choir; Sodality; Biology Club.
LORRAINE M. SHANNON	75 Sawyer St.	St. Monica	Bellarmino Club; Louis Pasteur Club; Sodality; Senior Play.
DOROTHY A. SHEIL	626 Magee Ave.	Sacred Heart	Sodality; Bellarmine Club; Louis Pasteur Club.
RITA M. SKELLY	68 Ellicott St.	St. Monica	Sodality; Bellarmine Club; First Aid; Louis Pasteur Club; Sodality Play 2; Christmas Play 3, 4.
BARBARA M. SMITH	22 Gregory St.	St. Boniface	German Club; Nieuwland Club; Louis Pasteur Club; Christmas Play 3; Sodality; Bellarmine Club.
MARGARET E. SMITH	186 Edinburgh St.	Immaculate Conception	Sodality; Dramusical 3; Nieuwland Club; Bellarmine Club; Le Cercle Français; Mendel Club.
MARJORIE A. SPRINGER	49 Cedar St.	Holy Family	Bellarmino Club; Sodality; Red Cross; First Aid; Louis Pasteur Club.
MARY C. SWEENEY	221 Weldon St.	St. Monica	Bellarmino Club; Sodality; Lanthorn Staff.
ANNA M. TARTAGLIA	460 Cottage St.	St. Monica	Choir 2, 3, 4; Sodality; Bellarmine Club; Mendel Club; Dramusical 3, 4.
JANE A. THURSTON	48 Biltmore Dr.	St. Margaret Mary	Senior Play; Sodality; Bellarmine Club; Nieuwland Club; Red Cross; Louis Pasteur Club; Le Cercle Français; Mantuan Club; Lanthorn Staff.
BLANCHE M. TIBERIO	175 Spencer St.	St. Anthony	Sodality; Bellarmine Club; Gabriel Staff; Choir; Dramusical 3; Commercial Honor Society.
SYLVIA A. TIERNAN	3562 Lake Ave.	Holy Cross	Sodality Play 2; Basketball; Bellarmine Club; Sodality.
MARY TIERNEY	202 Crosman Ter.	Blessed Sacrament	Sodality; Bellarmine Club; Treasurer of Nieuwland Club; Louis Pasteur Club.
DORIS MARIE TOOMEY	273 Sherwood Ave.	St. Augustine	Biology Club; Bellarmine Club 3, 4; Home Economics Club; Sodality.
EUNICE M. VAY	26 O'Neil St.	Holy Family	French Club 3; Perosian Choir 1, 2, 3, 4; Dramusical 3; Christmas Play 3, 4; Senior Play 4; Bellarmine Club 4; Gabriel Staff; Basketball 3; Sodality.

GRADUATE DIRECTORY

NAME	ADDRESS	PARISH	ACTIVITIES
ELIZABETH J. VENTURA	450 Lyell Ave.	Holy Apostles	Sodality; Choir and Dramusical 3; Bellarmine Club; Louis Pasteur Club.
MILDRED C. VOELKL	19 Sherman St.	Holy Apostles	Bellarmino Club; Choir and Dramusical 2, 3, 4; Gabriel Staff; Sodality; Louis Pasteur Club.
DORIS M. WACHTER	317 Sherman St.	Holy Apostles	Bellarmino Club 2, 3, 4; Home Economics Club; Sodality.
ROSEMARY A. WAGNER	260 Clifford Ave.	St. Michaels	Bellarmino Club.
MARGARET M. WALSH	555 Magee Ave.	Sacred Heart	Sodality; Le Cercle Français.
MARY L. WALSH	47 Normandy Ave.	St. Augustine	Bellarmino Club; Louis Pasteur Club; Le Cercle Français; Sodality; Lanthorn Staff.
BETTE A. WARK	45 Brookdale Ave.	Our Lady of Good Counsel	Mendel Club; Bellarmine Club.
HELEN J. WEBER	41 St. Jacob St.	Holy Redeemer	Bellarmino Club; Le Cercle Français; Sodality.
DOROTHY M. WEHNER	223 Pullman Ave.	Sacred Heart	Sodality; Louis Pasteur Club; Mendel Club; German Club; Nieuwland Club; Mantuan Circle; Bellarmine Club.
MARY L. WELCH	326 Denise Rd.	Holy Cross	Sodality; Dramusical; Bellarmine Club; Mendel Club; Louis Pasteur Club.
RUTH K. WERNER	61 St. Jacob St.	Holy Redeemer	Bellarmino Club; Sodality.
JEAN A. WHELEHAN	61 St. John's Pk.	Holy Cross	Christmas Play 3; Choir 2, 3, 4; Operetta 3, 4; Bellarmine Club; First Aid; Biology Club; Senior Play.
MARY M. WHITE	1501 Lexington Ave.	Holy Rosary	Sodality; Bellarmine Club; Basketball.
VIRGINIA M. WHITEHOUSE	1881 East Ave.	Our Lady of Lourdes	Mendel Club; Bellarmine Club; Nieuwland Club; Sodality.
MARY E. WINTERROTH	101 Charlton Rd.	St. Margaret Mary	Choir; Bellarmine Club; Dramusical 4; Sodality.
BETTY M. YEOMAN	97 Oriole St.	Holy Rosary	Sodality; Bellarmine Club; Commercial Club; Chairman of Testing Committee.
LENA M. ZIMARINO	215 Ravine Ave.	Holy Rosary	Bellarmino Club; Commercial Honor Society; Louis Pasteur Club; Sodality.



Where are you from?

From the gray hills of Nazareth.

Why are you so poorly clad?

I am but poor.

Why your lined face?

Why your bent shoulders?

Pain knew I well.

Long care did endure.

Why your stout pilgrim's rod?

Knew I long wandering.

Why your calm peacefulness?

I lived with God.

Will you but help me, I am care-laden?

Come, I am Joseph.

Come, I'll take you to God.

SISTER MARIE FRANCES FOLEY '28



SAINT JOSEPH




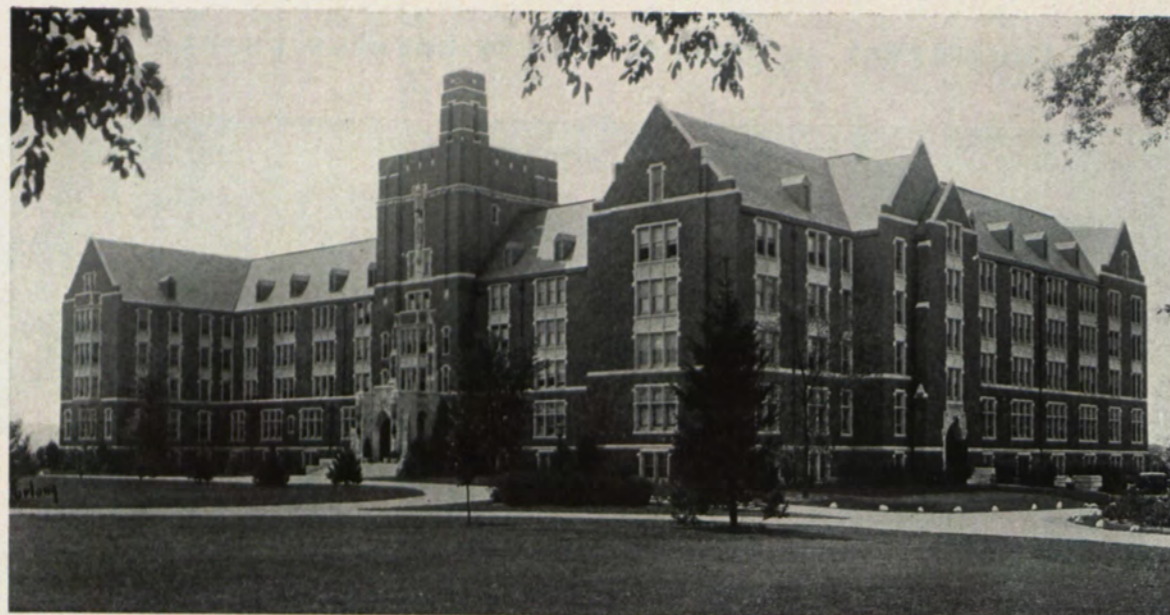
Our Advertisers Deserve
Your Patronage and will
Appreciate It.

YOUR STORY IN PICTURE LEAVES NOTHING UNTOLD



A SENSE OF ART VALUES, CRAFTSMANSHIP and YEARS OF
EXPERIENCE CONSTITUTE the ESSENTIALS
of OUR SERVICE

 ARTISTS AND PHOTO ENGRAVERS
CULVER ENGRAVING COMPANY, INCORPORATED
HERALD D. & C. BUILDING, 59 E. MAIN ST., ROCHESTER, N. Y.



THE SISTERS OF SAINT JOSEPH OF THE DIOCESE OF ROCHESTER
CONDUCT

NAZARETH NORMAL SCHOOL, East Avenue, Pittsford, New York, an institution empowered by the Regents of the University of the State of New York to accredit religious teachers. It is affiliated with Nazareth College which confers the degree of B. S. in Education on the Normal graduates on the completion of an additional year of academic work.

SAINT JOSEPH'S HOSPITAL, Market Street, Elmira, New York, is fully accredited by the University of the State of New York; approved by the American College of Surgeons and registered by the American Medical Association. It is affiliated with the Catholic University of America, Providence Retreat.

SAINT AGNES INSTITUTE, 876 East Main Street, Rochester, New York, offers pre-, grammar, and high school courses to girls; music and art; board and room for students; select rooms for adult boarders. Telephone Stone 6719.

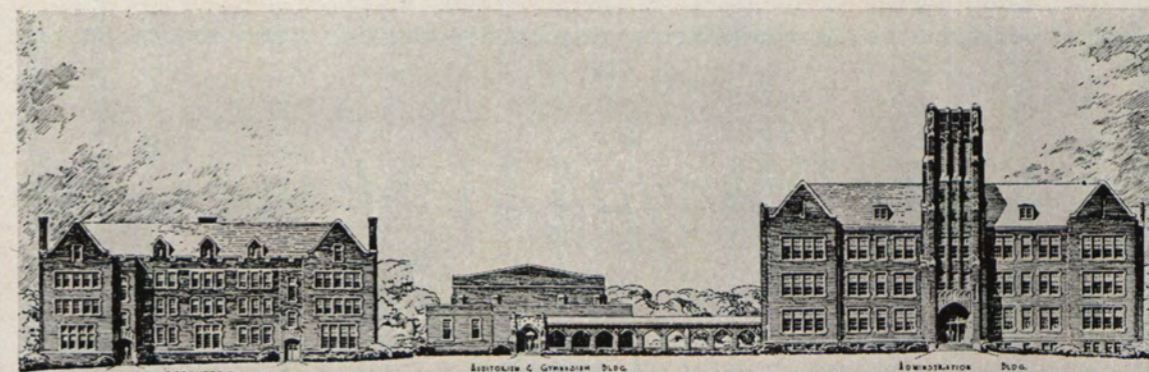
NAZARETH HALL, Raines Park and Alameda Street, Rochester, New York, is a select day and boarding school for boys of primary, intermediate and grammar grades. Religion, speech, dramatics, music and physical development are stressed. When desired, transportation and a hot noonday meal are provided. Glenwood 711.

NAZARETH MODEL SCHOOL, Jefferson and Sutherland Roads, Pittsford, New York, will open its fourth scholastic year on Monday, September fourteenth, when it will offer complete training for boys and girls of nursery and kindergarten ages and for those of grammar school grades 1, 2, 3, 4, 5, 6. The curriculum includes: Religion, Speech, Fundamentals of simple French conversation, nature study, aesthetic dancing, rhythmic exercises, directed play, instrumental music and creative art.

At the supervised luncheon proper habits of eating and table manners are acquired; a permanent dormitory provides beneficial rest periods under supervision; taxi service may be had on request. A registered nurse is in attendance.

Terms: \$10 per month without taxi service.

\$15 per month with taxi service.



THE NEW NAZARETH COLLEGE : EAST AVENUE : DIOCESE OF ROCHESTER

NAZARETH COLLEGE

*announces the opening of the nineteenth scholastic
year in its new and spacious quarters on*

EAST AVENUE, PITTSFORD

Nazareth College . . .

founded by the Sisters of St. Joseph, was incorporated by the New York State Legislature in 1924. The College is accredited by the University of the State of New York, the Association of Colleges of the Middle States, and the National Catholic Educational Association.

Nazareth College . . .

through its high standards and its excellent faculty, is rated as one of the leading women's Colleges of the country. The College aims to provide opportunities for Catholic young women, of a high Christian culture and excellent educational facilities.

Nazareth College . . .

offers courses leading to the following degrees: Bachelor of Arts, Bachelor of Science, Bachelor of Science with major in Business, in Public School Music, in Speech and in Nursing. For the duration of the war it is affiliated with Providence Hospital, Washington. The Department of Sociology gives courses preparatory for the field of Social Service. A course of Fine Arts is offered, also a pre-medical course. The College prepares in every department for teaching in the public schools.

A very beautiful dormitory for resident students is one of the new buildings.

Catalog on request.

To Nazareth Academy
and
Its Faculty

For the Past:

Felicitations!

For the Present:

Unending Gratitude!

For the Future:

A Continuation of Inculcating the Principles
and Lessons of the first Nazareth under the
Inspiration and Loving Guidance of its glor-
ious Trinity—

JESUS, *Model Teacher*

MARY, *Model Woman*

JOSEPH, *Patron of the Universal
Church*

T H E S E N I O R S

NOISE QUIETING

ACOUSTICAL CORRECTION

COLLUM ACOUSTICAL COMPANY, INC.

Acoustical Engineers and Contractors

CELOTEX ACOUSTICAL PRODUCTS

135 Spring Street

Other offices in:—Syracuse, Buffalo, Albany

Main 6406

SHEET METAL WORK
ROOFING

HOME INSULATING

FLESCH & SCHMITT, INC.

118 BROWN STREET

MAIN 5234

ROCHESTER BOOK BINDERY

★ ★ ★

LIBRARY *and* MAGAZINE BINDING

★ ★ ★

165 - 173 ST. PAUL STREET

Gold Stamping

Book Binding

A. W. HOPEMAN & SONS COMPANY

BUILDERS

ROCHESTER, NEW YORK

FURLONG STUDIO

★ ★ ★

Photographers for
"THE LANTHORN"

★ ★ ★

27 CLINTON AVENUE SOUTH

EDUCATE YOURSELF . . .

in the best of Catholic thought and Catholic Action by reading the news and views of things Catholic in your own diocesan newspaper . . . published weekly for the Catholic people of the entire Rochester Diocese. Read the

Catholic  Courier

The Influential Newspaper of the Rochester Diocese

FRED J. HINES

2750 MONROE AVENUE

★ ★ ★

GENERAL CONTRACTOR

★ ★ ★

Office Phone

Hillside 2425

Residence Phone

Monroe 5690

Meat Builds You Up for the Battle of Life

Meat is fuel for endurance, for fun, for strength.
It helps the child to grow, the man to work, the
woman to be at her best.

★ ★ ★

Do and Keep Doing with

ARPEAKO MEAT PRODUCTS

Rochester Packing Co., Inc. Rochester, New York

Compliments of

FRANK M. QUINLAN

ARCHITECT

406 WILDER BUILDING

Compliments of a Friend



Coca-Cola

TRADE-MARK REG. U. S. PAT. OFF.

ROCHESTER COCA-COLA BOTTLING CORP.
A. L. ANDERSON & SONS
190 BERLIN STREET ROCHESTER, N. Y.

FRANK H. DENNIS STORES, INC.

C. D. STREETER, PRES.

37 Centennial Street Phone Genesee 6710
Wholesale Distributors

CANDIES
COCA-COLA - FOUNTAIN SUPPLIES - PAPER BAGS
Daggett's Chocolates

Compliments of
SAINT MONICA'S PARISH

Eyesight Is
A Priceless Possession

Tired eyes mean headache, eyestrain and possible nervous disorders. If your eyes bother you—have them examined. If it is a question of inadequate or improper light—try an I. E. S. Lamp.

I. E. S. Lamps provide scientifically correct light and safeguard your sight and health. Every student should have an I. E. S. Lamp for homework and other reading tasks.

"Better Light Means Better Sight"
ROCHESTER GAS & ELECTRIC

BUSES FOR CHARTER

Consider the Advantages of Chartering a Bus
from the standpoint of
Sociability, Economy, Convenience, and Safety

ROCHESTER TRANSIT CORPORATION
PASSENGER DEPARTMENT

Phone Main 4200 267 State Street Rochester, N. Y.



Compliments of
16 FRONT STREET

RED & WHITE
FOOD STORE

429 MERCHANTS ROAD J. E. WEEGAR
Groceries . . . Meats . . . Vegetables
Frosted Foods

We Deliver Culver 4947 - 4948



\$1.00 WEEK
NEW
ROYAL - CORONA - REMINGTON
UNDERWOOD - PORTABLES
RENTALS—*Special Rate to Students*
CITY TYPEWRITER

160 CLINTON AVE. SOUTH STONE 3424

Compliments of

DWYER ELECTRIC COMPANY

225 TREMONT STREET

COMAC BUILDER'S SUPPLY CORP.

ALDEN C. MCGUIRE, *President*

SAND and CINDER BLOCKS

MASON SUPPLIES - REFRACTORIES

16 NORMAN STREET ROCHESTER, N. Y.
GLENWOOD 1010

Hits that Thirsty Spot
Pasteurized Not Carbonated

GREEN SPOT
FRUITS - ADES

- * Orange
- * Grape
- * Pineapple
- * Tomato Cocktail
- * Plymco Chocolate Chill

Call
Genesee 762
Culver 308-R

WM. J. WOERNER AND SONS

Manufacturers of

CHURCH FURNITURE AND EQUIPMENT

485 HAGUE STREET

ROCHESTER, NEW YORK

SUCCESS TO THE CLASS OF 1942

TENTH WARD REPUBLICAN ORGANIZATION

To the Future Home Makers

CLASS OF 1942

Congratulations and Best Wishes

SCHWALB COAL & OIL CO., INC.

BEST IN FUEL FOR NEARLY 80 YEARS

92 PORTLAND AVENUE

STONE 770

Compliments of
RYAN AND RYAN INC.
BUILDERS



NIAGARA UNIVERSITY
COLLEGE OF BUSINESS ADMINISTRATION
AT ROCHESTER

Registered College Degree Courses preparing for:
C. P. A. Examinations - Entrance to Law Schools

Executive Positions in Business - Teaching Commercial Subjects in High Schools

For information write the Registrar Niagara University

50 CHESTNUT STREET

TELEPHONE MAIN 1124

WILLIAM F. PREDMORE

SCHOOL SUPPLIES, RELIGIOUS
ARTICLES, CHURCH GOODS

93 STATE STREET

BALCRON COAL CO., INC.

TERMINAL BUILDING

★ ★ ★

Phones: Main 7580 - 7581

BITUMINOUS—ANTHRACITE—COKE—FUEL OIL

Compliments of
DI PAOLO BAKING COMPANY
598 NORTH PLYMOUTH AVENUE
Rochester, New York

Compliments of the
ATLANTIC STAMPING COMPANY

★ ★ ★

156 AMES STREET

ROCHESTER, NEW YORK

Congratulations to the

CLASS OF 1942

from

FATHER O'ROURKE

THE YATES COAL CO.

ANTHRACITE AND BITUMINOUS
ALSO COKE

Orders solicited for private residences, apartments and buildings.
Deliveries made under the personal supervision of Superintendent.

Boards and Canvas used for protection.

Phones: Stone 450, Stone 451

612 Lincoln-Alliance Bank Building General Office, 183 Main St. E.

LUCAS & DAKE CO., INC.
INSURANCE

•
234 Granite Building
MAIN 938 - 939

130 Main Street East

Rochester, New York

N. E. OWEN SERVICE STORE

1640 LAKE AVE., OPP. KODAK PARK
GLENWOOD 233

MOHAWK TIRES

EXIDE BATTERIES

George C. Schaefer

Charles G. Schaefer

Edward Bauman

GEORGE C. SCHAEFER COMPANY

Formerly Schaefer & Hartel
8 MAIN STREET EAST

WATCHES, DIAMONDS, JEWELRY AND SILVERWARE

Phone: MAIN 6746

Exclusive Agents for Nazareth Rings

MASLINE RADIO PARTS

•
Wholesale Distributors

RADIO PARTS - LIST EQUIPMENT - RECORDERS
MICROPHONES - SPEAKERS - P. A. SYSTEMS
R. C. A. EXCLUSIVE DISTRIBUTOR

293 CENTRAL AVENUE

STONE 4437

"Good Morning Judge"

MERCURY *Ford* LINCOLN

SALES AND SERVICE
JUDGE'S

81 LAKE AVE.

ALWAYS OPEN

FUEL OIL - COKE - COAL
OIL BURNERS - STOKERS

•
LANGIE
FUEL SERVICE, INC.

Stone 4000

Ask for

ROCHESTER QUALITY SCHOOL SUPPLIES

"VALUE FIRST"

★ ★ ★

Manufactured by

ROCHESTER STATIONERY CO.

Compliments of a friend

PIANO
Masterpieces
EXCLUSIVELY



JOSEPH SHALE
ONE FORTY EAST AVENUE

Prepare for your Career at
**THE
SCHOOL
OF
COMMERCE**
362 EAST AVE. ROCHESTER, N. Y.

*The first Business Institute
in Western New York to offer
officially recognized courses of*

ADVANCED GRADE
in
*Secretarial Science
Medical Secretaryship
Accountancy
Business Administration*

•
**ASSOCIATE MEMBER
AMERICAN ASSOCIATION OF
JUNIOR COLLEGES**



CAREERS
start at
R.B.I.

NEW TERMS
begin
**JULY 6
SEPT. 8**

*Train for Victory
at R. B. I.*
MEDICAL SECRETARIAL
SECRETARIAL SCIENCE
BUSINESS ADMINISTRATION
and ACCOUNTANCY
STENOGRAPHIC and OFFICE MACHINES

other VICTORY courses
CIVILIAN PILOT TRAINING
U. S. NAVY V-1 ACCREDITED
COLLEGE PROGRAM
ARMY AND NAVY OFFICE
ADMINISTRATION

Write for full details
**REGISTER
NOW!**

**ROCHESTER
BUSINESS
INSTITUTE**
172 CLINTON AVENUE SOUTH

Compliments

of

a friend

of

Jean Marie O'Brien

Compliments of

W. B. COON CO.

MAKERS OF WOMEN'S SHOES

37 Canal Street

Rochester, N. Y.

THE EGGLESTON

E. A. DENTINGER

J. J. WARD

Air Conditioned

★ ★ ★

THE FINEST THINGS TO EAT

★ ★ ★

47 CLINTON AVENUE SOUTH

ROCHESTER, N. Y.

T. H. GREEN ELECTRIC CO.

31 NORTH WATER STREET

Rochester, New York

Telephone: Main 555

RYAN CARTING CO.

RYAN BROTHERS

MOVING - STORAGE

JOSEPH A. RONCONE
UNDERTAKER

859 PLYMOUTH AVENUE NORTH
Glenwood: 340

For Certified Heating
See Me First

MORTIMER DONOVAN

★ ★ ★

99 EARL STREET GENESEE 6363

WILLIAM C. SCHWAB
HIGH-CLASS PRINTING

289 Campbell St. Genesee 2159-J

COAL - COKE - FUEL OIL
DOMESTIC FUEL SERVICE
JOHN DiGAETANO
196 LYELL AVE. GLEN. 1093

Compliments of

WALTER WOJTCZAK
990 HUDSON AVENUE

DENGLER BUTTER & EGG CO.
Rochester's Finest Butter
CLEAR VALLEY
*Reputation for fine fresh New York State
Eggs Year Around*
113 ARDMORE STREET GENESEE 658

THE AMERICAN SPECIALTY CO.
Rochester's Leading Supply House

★ ★ ★

FOOD SERVICE EQUIPMENT
AND SUPPLIES

★ ★ ★

283 - 291 CENTRAL AVENUE

Compliments of

SHANNON SUPPLY CO.

★

CAFETERIA AND
DINING ROOM
EQUIPMENT

Congratulations to the
CLASS OF 1942

★ ★ ★

EDWARD R. CLARK
Funeral Home

Compliments of

J. A. TRZECIAK
1043 ST. PAUL STREET

TROMPETER BROS. CO. INC.
741 HIGHLAND AVENUE

GEORGE J. MARCHNER
LIFE INSURANCE

★ ★ ★

Phone: Charlotte 2588-R
93 SOMERSHIRE DRIVE

B. T. FLANNERY
FUNERAL HOME

17 PHELPS AVENUE
Glenwood 4251

STAUB & SON
Dry Cleaners—Launderers—Furriers

Plant—951 Main St. E., Opp. the Armory
Branch Store—1760 East Ave.

*One stop by our routeman takes care
of your Laundry and Dry Cleaning.*

CUTALI'S
SPAGHETTI RESTAURANT

★

Italian Dinners by Appointment

★

Rochester, N. Y.
107 NORTH ST. 25 BROAD ST.
Main 8485 Main 8204

Compliments of
HOLY ROSARY PARISH

ZWEIGLE'S

Tasty Sausage Products

50 Varieties
Sold at ALL Food Stores
or call
Zweigle's - Stone 6944

Rochester's Finest
GIRLS' SHOP

AT THE
NATIONAL

EAST MAIN AT STONE

HAUBNER & STALLKNECHT
FUNERAL HOME

★

828 JAY STREET
Genesee 300

★

Edward E. Haubner Sarto W. Stallknecht

H. O. WAUGH HARDWARE

★ ★ ★

FURNACES and TINSMITHING
PAINT, OILS and GLASS

★ ★ ★

773 LAKE AVE. COR. LEXINGTON
Glenwood 261

Compliments of

C. F. SCHEUERMAN SONS

FUNERAL DIRECTORS

412 BROWN STREET

ALPHONSO RICCIARDO

Dealer in

GROCERIES - MEATS
FRUIT AND VEGETABLES
CIGARS AND TOBACCO

★ ★ ★

PHONE MAIN 8027 28 PROSPECT ST.

EMERSON FUEL CO.

Red Star Brand

COAL, COKE and CHARCOAL

Telephone: Glenwood 800 - 801

Yard at
549 LYELL AVENUE

License No. 176

For your
TEAS, PARTIES, LUNCHEONS
... serve ...

CLUB CRACKERS

★ ★ ★

ONTARIO BISCUIT COMPANY

"Supreme Bakers"

Compliments of

FARRELL BROTHERS
COLONIAL FUNERAL HOME

Compliments of

BARTOLOMEO GIORDANO

Compliments of

STEPHENS
210 EAST MAIN STREET

Compliments of

WILLIAM J. HICKEY

PRESCRIPTION OPTICIAN

277 ALEXANDER STREET

Compliments of

VINCENT F. BARKER

PHOTOGRAPHER

17 GIBBS STREET

STONE 247

Best Wishes to the

CLASS OF 1942

of

NAZARETH ACADEMY

THE REV. BERNARD KUCHMAN

BERT L. PAULUS

PLUMBING - HEATING
HARDWARE

459 LYELL AVENUE

Glenwood 3126

Compliments of

THE PERRY FLOWER SHOP

441 CHILI AVENUE

GENESEE 117

•
SENECA HOTEL ARCADE

MAIN 8447

Compliments of

THE CURTIN AGENCY

•
GENERAL INSURANCE

•
GRANITE BUILDING

Stone 3519

Congratulations

to the

GRADUATES

TEKAKWITHA CLUB

HOLY FAMILY CHURCH

•
EIFFERT AND FISHER

SERVICE STATION

•
47 THURSTON ROAD

Genesee 7871

MILLER BROTHERS

FUNERAL DIRECTORS

474 LYELL AVENUE

Compliments of

HENNER'S LIQUOR STORE

554 CHILI AVENUE

RED & WHITE FOOD STORE

1056 DEWEY AVENUE

Prompt Delivery

Telephone: Glenwood 6981

Compliments of

GORDON A. HOWE

Greece Supervisor

At All Leading Dealers . . .

PHILCO

**RADIOS - REFRIGERATORS
AIR CONDITIONERS**

Distributed by

BEUCAIRE, INC.

228 Broadway

Stone 5694

RYAN & McINTEE

FUNERAL SERVICE
is the best and costs no more

★

CALL STONE 1464 B. LEO McINTEE
207 CHESTNUT STREET

★

The Funeral Home — Non-Sectarian

SIBLEY, LINDSAY & CURR CO.

Western New York's

SHOPPING HEADQUARTERS

Yes! For almost three-quarters of a century Sibley's has been the shopping headquarters of people throughout all Western New York. "Fine quality merchandise at lowest possible cost" . . . a principle upon which this store was founded, is a great Sibley tradition today. A tradition which will be ever ours to merit the confidence of those whom we serve.

Congratulations to the

CLASS OF 1942

of Nazareth Academy

THE SODALITY

of

HOLY ROSARY PARISH

L. W. MAIER'S SONS

Funeral Directors Since 1872

RUFUS MAIER, *Mgr.*

870 CLINTON AVENUE NORTH

Rochester, New York

HOWE & BASSETT CO.

Established 1885

PLUMBING - HEATING
AUTOMATIC SPRINKLERS
PERMOTIT WATER SOFTENERS

840 UNIVERSITY AVENUE

Call—Monroe 3

Compliments of

A. W. PUTZIG
DRY CLEANING CO.

GLENWOOD 5701

DEWEY UPHOLSTERING
AND
FURNITURE CO.

206 LYELL AVENUE

*General Upholstery and
Furnishings*

P. E. YEOMAN

COAL AND COKE
WEST POINT ICE

William P. Waterman

957 Jefferson Ave. 247 Cottage St.
Telephone: Genesee 324

We Deliver

Main 3184

FILIPPONE BROTHERS

FRESH FRUITS AND VEGETABLES

At Their Best

966 CLINTON AVENUE NORTH

Compliments of

KING MAHONEY

W. A. McCORMICK

PLUMBING AND HEATING
4 LAKE AVENUE

**GET BOSCUL
COFFEE..**

**IT TASTES AS GOOD
AS IT
SMELLS!**



PHONE STONE 3503

ROCHESTER COSTUME CO.

374 COURT STREET

*Costumes for All Occasions
Made, Rented and Sold
Wigs - Masks - Make-up*

DEL-BAR FUEL SERVICE

•
COAL - COKE
FUEL OILS

•
373 SMITH STREET
Main 5050

For Particular People

**HAFNER
HOME LAUNDRY INC.**

•
595 CLINTON AVE. NORTH
Main 2978

RUSSEK'S MARKET

MAX RUSSEK INC.

Quality Sausage

257 AMES ST.
ROCHESTER, N.Y.

Compliments of

**GEORGE A. KLIER,
PHARMACY**

692 MAPLE STREET

MARY'S LINEN SHOP

GENERAL DRY GOODS

371 SMITH STREET
Main 1530

Main 428 — Main 429

T. R. Huber Electrical Co., Inc.

FOR THINGS ELECTRICAL

68 SOUTH AVENUE
Rochester, N. Y.

Compliments of

NEISNER BROTHERS

467 RIDGE ROAD WEST

Compliments of

CHAS. P. MEAD & SONS, INC.

Fred J. Stehle

Compliments of

PROFETTA FUNERAL HOME

1276 CLIFFORD AVENUE

Phone: Stone 274

GEORGE E. BRENNAN

REAL ESTATE BROKER

•
65 BROAD STREET
Main 4240 Rochester, N. Y.

Compliments of

Herbert "Rip" Benzoni

of

Zimmerli Business Furniture

130 SOUTH AVENUE

Pure Quill
Gasoline and Oil

Residence
55 Benedict Drive

Phone
Genesee 6444-R

BERNARD J. HENSLER

DIAMONDS, WATCHES AND JEWELRY

301-303 COMMERCE BLDG.
Main St. E., cor. South Ave.

Phone STONE 496

TYPEWRITERS—ALL MAKES

RENTED, REPAIRED

•
TYPEWRITER STORE

92 MORTIMER STREET

Phone: Stone 853

Compliments of
JACOBSON'S MARKET
53 FRONT STREET

GEORGE B. HAWKEN
•
Painter and Decorator
•
186 CHAMPLAIN STREET
Phone: Genesee 4765

Compliments of
THOMAS F. TROTT

DONALD W. SAUNDERS
•
INSURANCE
•
47 STATE STREET

FILMAR FLORIST
601 PLYMOUTH AVENUE NORTH
Rochester, New York
MAIN 751

Compliments of
WARD'S HARDWARE
567 JEFFERSON AVENUE

Main 5976

SCANLAN AND LANE
QUALITY JEWELERS
Watches - Diamonds - Silverware, etc.
231 Burke Bldg.
5 ST. PAUL STREET
First Class Watch and Jewelry Repairing

HENRY L. JESSERER
•
COAL COKE
FUEL OIL
•
Serving Rochester since 1900
MAIN 679 1379

MONROE 50

N. J. MILLER'S SON
FUNERAL DIRECTOR
706 SOUTH AVENUE
Rochester, N. Y.

Three Nationally Known Shoes
Air Step Shoes for Women
Roblee Shoes for Men
Buster Brown Shoes for Children

•
SCHMANKE'S
1480 DEWEY AVENUE

THE
SAGAMORE HOTEL
111 EAST AVE.
•
extends a cordial invitation to
all Nazarenes to enjoy our
facilities for social activities.

•
MORGAN J. SMITH,
Manager

 TAKE HOME
SOME
DREAM-STEAKS
INDIVIDUAL PORTION **10¢**

NORBERT E. VAY JOSEPH R. VAY

•
VAY FUNERAL HOME

•
604 MAPLE STREET GENESEE 5938



BALE PIN COMPANY
DORCHESTER CENTER
Massachusetts

•
SCHOOL AND CLUB JEWELRY

Compliments of
JOHN H. GARNHAM
GROCERY
•
823 DEWEY AVENUE

Follow the Crowd to . . .

THE RITZ



Office Systems - Supplies
Steel Desks - Files
Steel Storage and
Shelving Equipment

YAWMAN AND ERBE MFG. CO.
41 CHESTNUT STREET

THE CRESCENT PURITAN
LAUNDRY, INC.

★ ★ ★

1630 DEWEY AVENUE

Best Wishes

to

All Nazareth Students

from

SHERIFF ALBERT SKINNER

Compliments of

BOND BAKERS

392 NORTH STREET

"Say It With Our Flowers"

GLENWOOD 1240

FARMEN
JOR
LOWERS

331 DRIVING PARK AVENUE

Compliments of

JOSEPH J. BUCKLEY

FUNERAL DIRECTOR

796 DEWEY AVE. GLEN. 4906

OTTO STEINWACHS & SON

GENERAL CONTRACTORS

★ ★ ★

1661 CLINTON AVE. N.

Rochester, N. Y. Glenwood 5689

Compliments of
MARTIN T. MAY

BAUMAN & BAYNES
333 DRIVING PARK AVE.

•
MEATS GROCERIES
VEGETABLES

HETZLER BROS. CO., INC.

•
ICE - COAL - COKE

•
801 DRIVING PARK AVENUE
Phone: Glen. 446 - 447

Compliments of the
MANHATTAN RESTAURANT
25 EAST AVENUE

Compliments of

ANTHONY LINK'S SONS
BUILDING CONTRACTORS

ROCHESTER, N. Y.

Main 4894

PERDUE & COMPANY, INC.

Engineers - Contractors
Heating - Ventilating - Plumbing

65 BROAD ST.—TERMINAL BLDG.
Rochester, N. Y.

Fergus Perdue

Congratulations to

CLASS OF 1942

JOHN W. MATTLE

Compliments of a friend

For Beautiful Dry Cleaning

RING MAIN 24

DOLLAR
DRY CLEANING
CO., INC.

395 ST. PAUL STREET

HENRY D. HALLORAN AND SONS

•
Mooney's Funeral Directors

•
341 PLYMOUTH AVENUE SOUTH
Phone: Main 127 Rochester, N. Y.

Best Wishes

JOHN M. BLACKWOOD

Carpets, Rugs, Linoleum
Asphalt Tile, Rubber Tile

HORTON & QUINN CO., Inc.

430 MAIN STREET EAST
Stone 1206 Rochester, N. Y.

Stone 1968 Stone 1969

Rochester Distributors of
RING-FREE MOTOR OIL

HADLOCK PAINT CO., INC.
PAINTS, OILS AND GLASS

466 - 470 CENTRAL AVENUE
Rochester, New York

Compliments of
STAUD SHOE CO.

Compliments of
CRAMER DRUG STORES
Rochester, N. Y.

LEONARD DAKIN
GENERAL INSURANCE
1012 REYNOLDS ARCADE BLDG.
•
Branch Office:
1791 DEWEY AVE. at RIDGE ROAD
Main 5071

Since 1902

WAGG'S DEPARTMENT STORE

Wagg's Corners

•
COR. LAKE AND RIDGE GLEN 976

SINUS SUFFERERS
GET RELIEF THIS QUICK
EASY WAY

Use MAID'S NOSE SPRAY
Results guaranteed or money will be
refunded.
Sold at all first class Drug Stores
No case of sinus is too chronic for
MAID'S NOSE SPRAY

Stone 2751 Stone 2752

•
Headquarters

Bowling . . . Baseball . . . Sports

•
JOE SARGENT'S SMOKE SHOP
249 EAST AVENUE

LUCAS SCREW PRODUCTS CO.

★
Automatic Screw Products

•
C. E. Lucas Phone Main 278
24 VERONA ST., ROCHESTER, N. Y.

CHARLES A. TUCKER

•
CHURCH GOODS

"Buy Where the Clergy Buy"

•
81 EAST AVENUE
(Next door to Gas & Electric Bldg.)
ROCHESTER, N. Y.

Compliments of
PAYNE AND DUNHAM
COAL AND COKE

•
34 BRONSON AVENUE
Estab. over 25 years

LORENZO'S

"Food Fit for a King"

33 CHESTNUT ST. STONE 732

Stone, 4567—Phones—Genesee 519
ROCHESTER WAYNE
DISTRIBUTORS CORPORATION

•
Wayne Oil Burner and
Air Conditioning
Louis J. Hofmayr
85 FRANKLIN ST., ROCHESTER, N. Y.

T. A. SHARP, Pres. C. E. HAYES, Treas.
C. R. HAGGERTY, Secy.

HAYES, SHARP & HAGGERTY, Inc.
INSURANCE SERVICE

*Covering Every Form of Insurance and
Surety Bonds*

TWO CONVENIENT OFFICES

414 MAIN ST. EAST, COR. GIBBS ST.
833 GENESEE VALLEY TRUST BLDG.

Telephones: STONE 1195 - 1196 - 1197

THE MOHICAN MARKET
AND BAKERY

QUALITY MEATS - VEGETABLES

In Season

*"Our Bake Shop Open for Inspection
Any Time."*

A. J. Bobb, R. Scott,
Store Mgr. Bakery Mgr.
MAIN 1002 366 LYELL AVE.

Compliments of

NATIONAL PAPER CO.

371 NORTH STREET

Main 4336

Compliments of

WATTS DRY CLEANING Co., Inc.

322 COTTAGE STREET

Genesee 614

Projansky

Furriers and Tailors

To Gentlewomen

and

READY TO WEAR CLOTHES

39 EAST AVENUE

Phones: Main 446 - 445 - 444

EGBERT F. ASHLEY CO.

Established 1852

GENERAL INSURANCE

Second Floor, Union Trust Co. Bldg.

19 MAIN STREET WEST

Rochester, N. Y.

We Telegraph Flowers

BLANCHARD FLORIST

58 LAKE AVENUE

HEDGES AND HOFFMAN

141 SCIO STREET

Compliments of
THE HART STORES

CROSBY FRISIAN FUR CO.

752 LAKE AVENUE

Glenwood 206

★

Cloth and Fur Coats Stored

For the Smart Girl Graduate

Those smart young graduates, and
Debs who would thrill at the sight
of the beautiful, and lovely gradu-
ating fashions — which will be fea-
tured at the

ANN CULHANE DRESS SHOP

571 LAKE AVENUE

Phone Glen. 5700

Open - Mon., Wed., Fri. evenings until 9

Compliments of

The DEWEY FLOWER SHOP

STONE 317 - 318 - 319

Albert
FLOWERS

363 EAST AVENUE

at Alexander Street

Compliments of

CHAMPION KNITWEAR Co., Inc.

71 ST. PAUL STREET

Rochester, N. Y.

★

"Specializing in Sorority Sweaters"

Phone Main 1995

REP. PHIL RUBENSTEIN

*The Music Center of
Rochester and Western N. Y.*

★

LEVIS
MUSIC STORES

★

33 SOUTH AVE.

412 E. MAIN ST.

VOELKL'S HOF BRAU

Try our Home Cooking in our new
Cafeteria Service.

★

We cater to parties, banquets, etc.
Reasonable Rates.

All Legal Beverages

392 LYELL AVE.

GLEN. 7102

Compliments of
E. J. BROMLEY
628 GENESEE STREET
Genesee 7643

JACKSON - BAILEY Inc.

Just Better
ICE CREAM and SHERBET
501 THURSTON ROAD
Genesee 7100

THE PAINE DRUG CO.
24 AND 26 EAST MAIN ST.
Established 1820

Compliments of
TRANT'S
CATHOLIC SUPPLY STORE
96 CLINTON AVE. NORTH

FIRE BONDS
AUTO ACCIDENT

FRANK J. RIEDMAN
GENERAL INSURANCE
1012 REYNOLDS ARCADE BUILDING
Main 137

PLATE GLASS LIABILITY
BURGLARY COMPENSATION

BOUCHER

•
FLOWERS

•
422 MAIN STREET EAST

Compliments of
THE
LIEDERKRANZ CLUB

LEO DODD—LOUIS MILLER
RESTAURANT

•
BEER - WINE - LIQUORS

•
564 - 568 CHILI AVENUE
Rochester, N. Y. Genesee 7597

THE WHITE
WIRE WORKS CO.
79-83 EXCHANGE STREET

JOHN R. HANNA

FUNERAL DIRECTOR

CULVER 328 1826 RIDGE ROAD

Compliments of
THE WHITE KITCHEN RESTAURANT
503 WEST AVENUE
Joseph L. Fico

*Compliments of the bakers
of*
WONDER BREAD
and
HOSTESS CAKE
CONTINENTAL BAKING CO.

CHARLES I. KENNEDY

FUNERAL DIRECTOR

1601 EAST MAIN ST. CULVER 3847
Service and Quality Unexcelled

Office: Main 3786
LEONARD A. GIUSTINO
REAL ESTATE BROKER
INSURANCE
Member Real Estate Board of Rochester
823 Powers Bldg. Rochester, N. Y.

CHARLOTTE APPLIANCES
COMPLETE HOME FURNISHINGS
4669 - 4671 LAKE AVENUE
Charlotte: 2020 - 233 Charlotte, N. Y.

Compliments of
B. P. D.

CHET'S DONUT SHOP
PLAIN and FANCY DONUTS
for Home and Parties
LUNCHES and ICE CREAM

697 Titus Ave. 862 Dewey Ave.
Char. 2754 Glen. 3304

Compliments of
FRANCIS M. SKIVINGTON
GEORGE J. SKIVINGTON

VISIT
SANTILLO'S RESTAURANT
STEAKS - CHOPS - SPAGHETTI
DINNERS - LUNCHES
Weddings and Banquets Our Specialty
Phone Reservations, Main 8834
405 Plymouth Ave. N. Free Parking

Main 4577

MARKS & ABRAMSON
JEWELERS and OPTICIANS
Budget Accounts

10 STATE STREET ROCHESTER, N. Y.

ARROW FOOD MARKET

MEATS - GROCERIES
FRUITS - VEGETABLES

537 Dewey Ave. 326 North St.
Glenwood 177 Stone 5530

Compliments of
PHYLLIS V. WALDEN
FLORIST
Flowers Telegraphed Everywhere
912 WEST MAIN STREET
Phone, Genesee 6974

BETTY REXFORD LUTZ

JUNIOR COTTON DRESSES

1555 Mt. Hope Avenue Monroe 3223

Compliments of

TOP'S SHOE REPAIR SHOP

43 EAST MAIN STREET

We call and deliver Main 4658

Steve Petix, Prop.

SOUND EQUIPMENT CO., INC.

928 GENESEE STREET

"Specialists in Sound-Amplifying Apparatus."

Phone Genesee 3073

Compliments of

MR. and MRS. HENRY O'CONNELL

FROMM BROS.
QUALITY SAUSAGE
and
MEAT PRODUCTS

"Folks Favor Fromm's Flavor"

200 CAMPBELL STREET

FREIGHT DISTRIBUTORS FURNITURE MOVERS

T. A. BARBA

CARTING and TAB DELIVERY

Glenwood 3011 Rochester, N. Y.

LOVELAND'S SERVICE STATION

635 NORTON ST. - MAIN 8917

Special - Complete Spring Change Over - \$3.25

Cars called for and delivered

No service charge

Compliments of

PETER A. VAN REMOORTERE'S MARKET

1256 CLINTON AVENUE NORTH

SUGAR BOWL

HOME MADE
ICE CREAM and CANDY
LIGHT LUNCHES

Glen. 4892

We Deliver

CALL BALL AND BALL WILL CALL
"FOR SHOE REPAIRING"

34 CLINTON AVE., NORTH, ROCHESTER, N. Y.

MAIN 895

MAIN 896

H. P. WAHL

CADET CLEANERS

1683 DEWEY AVENUE

Compliments of

PETER LEONE AND FAMILY

GEORGE M. CLANCY

CARTING CO.

MONROE 8018

8 CIRCLE STREET

We Deliver

Genesee 5964

PASSARELL BROS.
QUALITY MEATS and GROCERIES
FRUITS and VEGETABLES
BEER and ALE
270 GENESEE STREET
Two Doors from Madison Theatre

Compliments of

THE FRANCES DRESS SHOP

57 EAST AVENUE

Stone 625

Compliments of

a Senior

Compliments of

FRANK S. GOTTRY AND SON

General Carting and Storage

STONE 1412

495 BROADWAY

SMITH CERAMIC STUDIOS

901-905 MONROE AVENUE

China

Glass

Lamps

Shades

WILLIAM YALOWICH DRUG CO.

658 - 659 HUDSON AVENUE

Main 9084

Main 8398

Trusses, Abdominal Supports
and Elastic Hosiery
at low prices

Compliments of

DAD'S GROCERY

AND

DELICATESSEN

Char. 1750

38 Stonewood Ave.

BERTHA GEIGER SOMERS

MONUMENTS AND MARKERS

Monument Lettering and Cleaning

Phone: Gen. 1860-J

658 Maple Street

HONIGSBAUM'S

Town and Country

CLOTHES

HOUCK BROTHERS

FUNERAL DIRECTORS

515 N. GOODMAN STREET

"The Home of Furniture Fashions"

FRANK P. MAY FURNITURE CO.

Complete Home Outfitters

261-265 NORTH STREET

Rochester, N. Y.

Phone: Main 427

Open to 9 P. M.

WILLIAM C. WINTERROTH

ELECTRIC MOTORS

KEYSTONE BUILDERS'
SUPPLY CO.

85 PALM STREET

Compliments of

THE WILLIAM C. MENGES

FUNERAL PARLOR

309 PORTLAND AVENUE

THE SHIP

1488 DEWEY AVENUE

To

EDNA GESSNER

and

MARJORIE SPRINGER

God's Choicest Blessings!

THE GIRL SCOUTS OF HOLY FAMILY

Compliments of

HERB

HOLY FAMILY RECREATION CENTER

JOSEPH LEHNER

MASON CONTRACTOR

396 AMES STREET

Genesee 1291-J

HARRIS NUSBAUM'S
DOWNTOWN DEPARTMENT STORE

221 - 229 JOSEPH AVENUE

GRADUATION DRESSES AND ALL ACCESSORIES

Open Evenings

Compliments of
JOSEPH M. RUBY

Compliments of
a Senior

HOLY REDEEMER
ATHLETIC ASSOCIATION
BASKETBALL TEAM
1941 - 1942

DIAMONDS AND WATCHES STONE 3910

WILLIAM S. GULVIN
Certified Watch Maker
246 MERCANTILE BUILDING
Rochester, New York

WEAR . . .

DI PASQUALE SHOES
Enjoy Foot Comfort
for Entire Family

BEST QUALITY - BUY AT FACTORY - SAVE
1491 Dewey Avenue Glenwood 491

Compliments of

EDDY BEAUTY SHOP
Glen. 6598 2063 Dewey Ave.
Machine and Machineless Permanents
Two Operators

EVERYTHING for the GARDEN

HART & VICK
SEED STORE

CORNER STONE AND ELY STREETS

WILLIAM J. MALOY
REALTOR
618 POWERS BUILDING

A. DE BOER
GROCER
FRESH FRUITS AND VEGETABLES
453 ARNETT BLVD. COR. WOODBINE AVE.
Gen. 2600 Rochester, N. Y.

HANRAHAN REALTY
192 PIERPONT STREET
We specialize in
TENTH WARD SALES AND RENTALS
Phone Us—Glenwood 6757

VOGUE DRY CLEANERS
527 MAIN STREET EAST
Main 800

GENESEE BOOTERY
VITALITY SHOES
178 GENESEE STREET

Compliments of
VELTRI
SHOE REPAIR
AND FOOTWEAR
2852 DEWEY AVENUE

Style all the while at
WALD'S DRESS SHOPPE
Open Evenings Until 10 P. M.
873 CLINTON AVE. NORTH
(Near Clifford Ave.)
Main 1898 Rochester, N. Y.

THE FILMAR FLORIST SHOPPE
Best Wishes to the Class of 1942
of Nazareth Academy
601 NORTH PLYMOUTH AVENUE

PHONE, MAIN 6818
HARDWARE - DEVOE PAINTS - GLASS
BEN MILLER
Plumbing and Electrical Supplies
551-53-55 STATE STREET

Compliments of
LILAC LAUNDRY

J. B. SERVAS
JEWELERS
213 BURKE BLDG.—5 ST. PAUL ST.
Watches for Graduation
Main 3633 Rochester, N. Y.

Compliments of
SCHAEFER MARKETS
1050 DEWEY AVENUE

OCKENDEN'S ELECTRICAL STORE
PENFIELD, N. Y.
"Everything Electrical"
E. Rochester 70

HUGH McGRATH
840 EAST MAIN STREET
LUNCHES, CANDIES, SODAS

Compliments of
RIDGEWAY PHARMACY
1470 DEWEY AVENUE
We Deliver Glen. 1338

KITTY'S KAKE SHOP
P. Tirpaek, Prop.
Wedding and Birthday Cakes our Specialty
Phone, Genesee 1935 571 Jefferson Avenue

Compliments of
COUNCILMAN GREGORY F. MILLS

Compliments of
THE HOME DAIRY CO.
111 EAST MAIN STREET

WEBBER'S BOWLING HALL
501 PLYMOUTH AVENUE SOUTH

Yours for
Bigger and Better Dances
IMMACULATE CONCEPTION
YOUTH ASSOCIATION

Culver 3912—Phones—Culver 3050-R
EDW. BROCKMANN'S SONS
CUT FLOWERS, PLANTS,
FLORAL DESIGNS
1945 RIDGE ROAD EAST
Rochester, N. Y.

RALPH A. ALLEN & SON
JEWELERS
ELGIN AND HAMILTON WATCHES
Gifts for all Occasions
Genesee 1677 77-79 Orchard St.

Compliments of
THE ROSSITER EMPLOYMENT BUREAU
Office Placement
STONE 655 45 GIBBS STREET

H. E. WILSON, INC.
FLORIST
Flowers for All Occasions
STONE 1599 835 HUDSON AVE.

D. E. COVILL
DIAMONDS - WATCHES
HOTEL SENECA ARCADE
Rochester, N. Y.

EISENMENGER'S GROCERY

335 REMINGTON STREET

Free Delivery

Main 5018

Compliments of
FRANK ANGELINI

Compliments of

DONUT CENTER

1460 LAKE AVE.

GLENWOOD 7151

Compliments of

J. T. ANTCZAK

746 NORTON STREET

Stone 565

Coal - Coke

KOSTA CHRISTOFF

Retail

FRESH BAKED GOODS DAILY
FANCY AND STAPLE GROCERIES
All Kinds of Fresh Fruits and Vegetables

Phone: Glenwood 2000

404 Lexington

THE MODERN SHOE REBUILDER

Phone Glen. 2378—Call and Deliver

—Hats Cleaned—

1438 DEWEY AVENUE

Wm. Altier, Mgr.

STILLMAN'S
FULL-FASHIONED HOSIERY

by

HOLE-PROOF

ZAHNER AND CO.

SAUSAGE MANUFACTURERS

Wholesale—Retail

OLD CHEESE—HERRING IN SEASON

Main 1990

59 FRONT ST.

A Public Testimonial of Gratitude

to

Blessed Martin de Porres

for

Success in an Examination!

A SENIOR

LIBERTY SWEET SHOPPE

HOME MADE CANDIES

ICE CREAM SODAS, CIGARS AND TOBACCO

275 DRIVING PARK AVENUE

Compliments of

A. LEICHTNER HARDWARE

PAINTS - OILS - GLASS

We Deliver

705 Maple Street

Telephone: Genesee 3126

MOM'S GROCERY

We Delivery

Phone: Culver 137

1157 Culver Road

LOUIS C. PLUMERI

REAL ESTATE BROKER

Sales—Rentals—Exchanges

Farms, Houses, Blocks, Apartments
122 GLENDALE PARK

Telephone: Glen. 2492

Rochester, N. Y.

Compliments of

LEO A. LEWIS

CATERER

"No party too large or too small"

752 BROWNCROFT BOULEVARD

Modish Haircutting for Particular People

SAMUEL MARCELLO

BARBER SHOP

Special Attention to Children

1003 GENESEE STREET

Compliments of

MR. AND MRS. M. WILLIG

JOSEPH F. RIBSTEIN

PLUMBING and HEATING

MONROE 3009

416 GREGORY STREET

Compliments of
SANTAN ATHLETIC CLUB
of
SAINT STANISLAUS PARISH

Compliments of

JAMES J. MCGOWAN

GENERAL INSURANCE

PENFIELD, NEW YORK

August M. Maier

John G. Maier

AUGUST M. MAIER, FUNERAL HOME

FUNERAL DIRECTORS

1119 JOSEPH AVENUE

Rochester, N. Y.

Stone 6737

E. T. CLARK CARTING CO.

OFFICE:

334 WEST MAIN STREET

Telephones: Main 1162 - 1663

DOCTOR S. W. MEHR

DENTIST

307 DRIVING PARK AVE.

Telephone: Glenwood 2805

EHMANN'S MARKET

1018 CLINTON AVENUE SOUTH

Phone: Glenwood 4476

The Latest Smart Styles

JUDY'S BEAUTY SHOPPE

Julia A. Blodgett

1182 DEWEY AVENUE

BEER AND ALE MEATS - FRUITS - VEGETABLES

PAVONE'S MARKET & GROCERY

Quality Groceries and Meats
Makers of Home Made Ice Cream

538-542 EAST MAIN STREET

We Deliver

Phone: Stone 1161

Compliments

of

HOME ROOM 201

Compliments

THURSTON SANITARY
DISPOSAL SERVICE

IRONDEQUOIT, NEW YORK

Charlotte 2677

GLENWOOD 207

BO CINDER SALES

WASHED CINDERS

For Your Drugs Needs

L. V. CONNOR

PHARMACIST

470 Genesee Street

Opposite West High

JOHN HEIDERICH

724 CEDARWOOD TERRACE

PAINTER and DECORATOR

Telephone: Culver 329

Compliments of

ZLOTNIK'S SERVICE STATION

HUDSON AVENUE AND AVENUE D

Main 8272

Compliments of

MAC'S SWEET SHOPPE

1607 LAKE AVENUE

DECKER'S
DRY GOODS STORE

4415 LAKE AVENUE
Charlotte

WALDERT OPTICAL CO.

ALWAYS BETTER GLASSES
NEVER HIGHER PRICES

56 EAST AVENUE

Culver 3580 Open 9 A. M. to 6 P. M.
Wed., Thurs. and Friday Evenings to 9
SARA JANE BEAUTY SALON
2225 CLIFFORD AVENUE
Complete Line of
Beauty Culture - Permanents
Sara Giambrone Jane Amico

Compliments of
MONSIGNOR BURNS

Compliments of
JIMMY SPILLANE, Esq.

CASPER COAL CO.
COAL - COKE - FUEL OIL

383 COLVIN STREET GENESEE 733

The Real Hot Stand
ACKERMAN AND KLEIN
LYELL AND HOWARD ROADS

J. AMICO
FRUITS - VEGETABLES
GROCERIES - MEATS
Open Evenings and Sundays
3218 LAKE AVE. CHAR. 1517

Genesee 1180 We Call and Deliver
MAPLE CLEANERS & DYERS INC.
We Operate Our Own Plant
12 WALNUT STREET Rochester, N. Y.

HENRY GESSNER
GENERAL REPAIRING
GREASING - WASHING
Genesee 1476 289 TROUP STREET

Compliments of a friend

DEWEY SUPER MARKET
FRUIT AND VEGETABLE MARKET
MEATS - GROCERIES
1280 - 1282 DEWEY AVENUE
Glenwood 2186, 2187, 2188

Compliments of
HERMAN HETZLER

MAIN 3945
A. KARZ, INC.
COAL - COKE
Milton Karz 76 LOWELL ST.

MAIN 6670
NEW YORK FUR SHOP
CUSTOM FURRIERS EXCLUSIVELY
704 Clinton Avenue N. Rochester, N. Y.

CHAR. 2030
CHARLOTTE LIQUOR STORE
WINES - LIQUORS - CORDIALS
4455 LAKE AVE. AT LATTA ROAD
George Welch Rochester, N. Y.

Compliments of
E. E. THURSTON COMPANY
DRY CLEANERS
Stone 4956
1023 NORTON STREET Rochester, N. Y.

WHELPLEY & PAUL
Prescription Opticians
6 SENECA HOTEL ARCADE
where good glasses cost no more

Compliments of
BETTY G. JOST '40

140 Oriole Street

WILSON'S MARKET
MEATS and GROCERIES
We Deliver
1179 Plymouth Ave. S. Gen. 3356

HENCHEN BOWLING HALL

849 JAY STREET

KEENAN'S TAVERN
"Where good fellows get together"
2264 CLIFFORD AVENUE
Rochester, N. Y. Culver 5914

Compliments of
PRINCE FURNITURE CO.
(Furniture of Lifetime Satisfaction)
136-146 Main St. West - Cor. No. Washington

Compliments of
a friend of
M. BETTY MARCHNER

SALLY FROCKS
216 MAIN STREET, EAST
Stone 6940 Rochester, N. Y.

Compliments of
RENZI STUDIO
541 STATE STREET

CECELIA BEAUTY SHOP
49 FLEMING STREET
off Lake Ave.
Specializing in
Permanent Waves - Hair Dyeing
Finger Waves
Established 1909 Phone Stone 3192
EMPIRE TEXTILE WEAVERS
WEAVERS AND MENDERS
Tears, Moth Holes, Burns, Rewoven and Made
Invisible in Garments, Sweaters and Linens
409 BURKE BLDG.
5 St. Paul Street Rochester, N. Y.

Compliments of
LAWLER'S GROCERY
451 COOPER ROAD

AGOSTINELLI DRY GOODS STORE
115 STUTSON STREET
Charlotte 134-W

GEORGE BONACCI
RIVERFRONT RESTAURANT
Legal Beverages — Best Foods
431 RIVER STREET

Compliments of
POTTER'S RED AND WHITE
332 ARNETT BOULEVARD
Genesee 136

Compliments of
LEE'S ICE CREAM

559 STATE STREET
"Home of Good Things to Eat"

*Be at School on Time
Every Time*

RIDE A BICYCLE!

BECKWITH'S

271 LYELL AVE. GLENWOOD 811

Compliments of
SENECA MARKET

E. Oertel, Prop.

We Deliver

GLEN. 6724 - 6725 2197 CLINTON AVE. N.

SMALLINE'S CLINTON RIDGE PHARMACY

A. Smalline, Ph. G.

N. CLINTON AND RIDGE ROAD

Glenwood 4649

FARRELL'S DRUG STORE

R. D. Farrell, Ph.G.

Genesee 3638 Genesee 2717

1003 PLYMOUTH AVE., So.

Free Delivery

THE GOODIE SHOPPES

HOME MADE CANDIES and ICE CREAM

Two Stores

1700 Clifford Ave. 533 Portland Ave.

Compliments of

DR. and MRS. VINCENT E. FISCHER

Compliments of

AUGUST MUEHLEISEN BAKERY

BREAD, CAKES and ROLLS

602 JAY STREET

STONE 3284
F. GAISSERT
CUSTOM FURRIER

201 Present Bldg.
27 CLINTON AVE. S. ROCHESTER, N. Y.

ED. BAUMAN AND SON

High Grade Dairy Products

704 HELLEDALE ROAD

Cash and Carry

LEVIN'S PRINTING SHOP

Job and Commercial Printing
Personalized Christmas Cards

8 - 10 JOHNSON ST. STONE 4697
Rochester, New York

ROSE'S GROCERY STORE

A Full Line of
GROCERIES - FRUIT - VEGETABLES

138 GENESEE STREET

SCHULZ BROS.

COFFEE SHOPPE

355 DRIVING PARK AVENUE

Cor. Dewey Ave.

JOSEPH FERRARA

SHOE SHOP

4440 LAKE AVENUE

Compliments of

GARVEY FURNITURE STORE

Genesee 5150

FLORENCE'S BEAUTY SALON

*Specializing in Permanent Waving and
Hair Styling*

503 JAY STREET ROCHESTER, N. Y.

There Are Two
SEARS ROEBUCK & CO.

Stores in Rochester

Monroe Ave. at S. Union—Stone 2500
476 Ridge Rd. West—Glenwood 556

MANHATTAN WINE & LIQUOR CO.

Robert W. Smith, Prop.

The Store of Good Spirits—where you, too,
may pick up your Spirits

Prompt Free Delivery Genesee 4929
960 Genesee St. Rochester, N. Y.

RAYS LUNCH

869 DEWEY AVENUE

MARRIOTT'S FRENCH DRY CLEANERS

414 GENESEE STREET

Phone—Gen. 2310

CAMELIO BROS.

MARKET and GROCERY

OTIS, COR. AUSTIN

We Deliver Glen. 3283

**WINTERROTH'S
SHOES**

GLENWOOD 1600 DRIVING PARK AT DEWEY

Compliments of

HARRY J. POH

Home Made

ICE CREAM AND CANDIES

868 Joseph Avenue Phone: Main 7436

JAMES E. BRICK

COAL - COKE - OIL

9 REYNOLDS ARCADE TEL. MAIN 390

GENESEE 2893

LEONE'S BEAUTY SHOP

"For a more lovely you"

Machine and Machineless Permanents

108½ GENESEE STREET

Annette

Christine

ARNETT SHOE REPAIR

"Ask Phil"

362 Arnett Blvd.
Call and Delivery

Corner Rugby
Genesee 6860

Shoes dyed by Experts

and

Orthopedic Work

SULLIVAN'S COAL & COKE CO.

402½ LEXINGTON AVENUE

Rochester Gas & Electric Coal and Coke

Phone Stone 5050-J

Reasonable Prices

**LEXINGTON PRESS
QUALITY PRINTING**

161 FISHER ST.

ROCHESTER, N. Y.

Compliments of

MULLER AND BOCCO

833 DEWEY AVENUE

RING FUEL CO.

1600 DEWEY AVENUE

GLENWOOD 1748

COAL - COKE - FUEL OIL

"For Good Things To Eat"

GEORGE L. PALMOS

DRIVING PARK AVENUE AT BROEZEL

Compliments of

ROBERT MERRIMAN, D. D. S.

706 MAPLE STREET

TOWN TALK BAKERY
INCORPORATED
Glenwood 6772
601 PULLMAN AVENUE

KRIETER'S
SUBURBAN ROCHESTER'S MOST COMPLETE
DRUG STORE
659 Titus Ave. at Cooper Road—Glen. 3515

ELECTRICAL APPLIANCES
DU PONT PAINTS
HUNT'S HARDWARE
390 THURSTON ROAD GENESEE 3687

BEN'S CUT RATE DRUGS
944 CLINTON AVENUE N.
Rochester, New York

"Rochester's Speediest Cleaners.. Since 1909"
SPEEDY'S
DRY CLEANERS AND HATTERS
Main 6794 212-216 Court St.
Pick-Up-Delivery

MAIN 5840
Fuels—Best Quality Coal and Coke
FRENCHMAN AND SWEET, INC.
Stoves, Electrical Appliances
Refrigerators, Radios, Washers, Ironers
Furnaces and Heating
364-368 STATE STREET Rochester, N. Y.

Compliments of
BODNER'S TOBACCO CO.

Compliments of
DR. AND MRS. WM. B. MCGUIRE

Compliments of a friend

Phone: STONE 77
SELECTED FUEL INC.
COAL • COKE • FUEL OIL
Joseph DiPasquale, President
292 North Street Rochester, N. Y.

JOSEPH PODGURSKI
FRUIT and PRODUCE
12 EMANON STREET
Glen. 515-W
Also Carting and Moving

RICKARD HARDWARE
ACME PAINTS
Phone Genesee 185 750 Genesee Street

Compliments of
L. E. HILDRETH
OPTOMETRIST
101 CLINTON AVENUE SOUTH

CORONA HOME FURNISHINGS
411-419 Main St. W. Rochester, N. Y.
Complete Home Outfitters
Phone Main 2516
G. Lombardo

VOGT'S STORE
DRY GOODS AND MEN'S
FURNISHINGS
Phone Main 1513 969-71-73 Clinton Ave. N.

ROCHESTER CHAIR RENTAL CO.
WE RENT
Folding Chairs, Bridge and Banquet Tables
New Clean Equipment
1943 MAIN ST. E. CULVER 202

DAVIS DRUG COMPANY
PRESCRIPTION PHARMACISTS
1481 LAKE AVENUE
Corner Ridgeway

ROZZI TAILOR AND CLEANER
554-558 THURSTON ROAD
Genesee 2365

EMPIRE PHARMACY
2229 CLIFFORD AVENUE
Rochester, New York
Makers of
"BRONCO" for Coughs

We Deliver Genesee 725
ELLA MOORE LIQUOR STORE
CHOICE WINES, LIQUORS
759 Genesee Street Rochester, N. Y.

Compliments of
PARKER DRY CLEANERS

Compliments
ANDREW'S MARKET, INC.
"Where Meat is Always Fresh and Clean"
71 - 73 FRONT STREET
Phones: Main 2567 - 2568

BUNGALOW BEAUTY PARLOR
716 Genesee Street Phone: Genesee 173
Specialize in Permanent Waving
All branches of Beauty Culture
Permanents \$2.50 and up
Mon. Tues. Wed. Sat. Thurs. & Fri.
9 A.M. to 6 P.M. 9 A.M. to 9 P.M.

Greetings
To the CLASS OF 1942
from the father of
JANE and GERALDINE GAFFNEY

V A L L E Y
DRY CLEANERS HATTERS
We Call and Deliver
Genesee 1659 1175 Plymouth Ave. S.

"Always Reliable"
THURSTON FLORIST
338 THURSTON ROAD
Genesee 214
Flowers For All Occasions
Flowers By Wire

Compliments of
RELIABLE COAL CO.
226 KENT STREET

PARMELEE SHOE SHOP
54 EAST AVENUE
Director, John J. Moore
"Where Fitting Shoes is a Science"
STONE 2812

FAIRFAX BEAUTY SALON
411 CHILI AVENUE
Genesee 3820

HUSS MARKET
Where Your Dollar Buys
A Dollars Worth
GENESEE STREET AT SAWYER
Phone: Genesee 2519


STONE
6 2 4 4
FRANKLIN AT MAIN

JAMES T. MURRAY
PHARMACY
KODAK SUPPLIES
492 LYELL AVENUE

ARTHUR J. BAMANN

Member, Underwriters' Board of Rochester

GENERAL INSURANCE

1001-03-05 GRANITE BLDG. STONE 3342

CUT RATE DRUGS

IRONDEQUOIT PHARMACY

2054 E. RIDGE ROAD AT CULVER
Culver 5934 We Deliver

J. C. MIRGUET, INC.

104 - 108 PLATT STREET
Main 2425 and 2426

REFRIGERATED FUR STORAGE

Wholesale and Retail Furs

Compliments of

WEST END TAILOR AND CLEANER

Suits Made to Order

GENESEE 7558 378 THURSTON ROAD

Low Cost Hospitalization for
FAMILY, GROUP OR INDIVIDUALS

PHONE GLEN. 2732-R

NORMAN T. UHL

Agency

95 MYRTLE STREET ROCHESTER, N. Y.

Phone: Stone 937 - 936 Auto Delivery

JOSEPH J. BROWN MARKET

CHOICE MEATS
FANCY DRESSED POULTRY

17 RICHMOND ST. Rochester, N. Y.

All Kinds of Accordions Tuned and Repaired

SHABBARRASI MUSIC STORE

Musical Instruments of Every Description
Piano Accordions Our Specialty

Free Lessons with Each Purchase

764 Clinton Ave. N. Stone 2191

STONEWOOD FOOD SHOPPE

305 STONEWOOD AVE. COR. CRAGG RD.

We deliver

Char. 790

NEWMAN FLORIST

FLOWERS FOR EVERY OCCASION

Gen. 4698 450 Brooks Ave. (Cor. Post)

LOUIS M. MIDNIGHT

TAILOR AND CLEANER

2203 CLIFFORD AVENUE
Phone: Culver 980 Rochester, N. Y.

BONADIO'S FOOD STORE

GROCERIES - FRUITS - VEGETABLES
COLD BOTTLED BEER

1358 CLIFFORD AVE. MAIN 8325

"Exclusive Curtains—But Not Expensive"

We Specialize in Curtains and Bed Spreads
and Can Show You the Largest Variety of the
Newest Styles in Rochester.

SHOP HERE AND BE CONVINCED

PAULS CURTAIN SHOP

76 So. Clinton 4 Doors South of Forman's

Day—Glen. 6851 Night—Glen. 6022-W

WITTMAN'S GARAGE

2496 RIDGE RD. W., GREECE, N. Y.

GENERAL AUTO REPAIRING

24 HOUR TOW SERVICE

Compliments of

G. BAREIS AND SON

EVERYTHING IN FOOTWEAR

826 JOSEPH AVENUE

Compliments of

GORDON WHITE

265 EAST AVENUE

S M A L L ' S

JEWELERS - OPTICIANS

STONE 3958

LECKINGER'S

Wilbur Coon Shoes

FOR

TIRED FEET

32 St. Paul Street Rochester, N. Y.

FRANCIS E. BURNS

NEW YORK LIFE INSURANCE CO.

★ ★ ★

LIFE INSURANCE AND ANNUITIES

★ ★ ★

42 EAST AVENUE

Bus. Main 1416 Res. Glen. 3899-W

GEORGE F. McGRATH

GENERAL INSURANCE

1012 REYNOLDS ARCADE BUILDING

LIBERTY CREAMERY

DELICIOUS

HOME MADE ICE CREAM
SODAS LIGHT LUNCHES

769 EMERSON STREET GLEN. 4938

Compliments of

THE MISS ROCHESTER

FROCKS, INC.

BRIGHTON RADIO &
ELECTRIC COMPANY

228 WINTON ROAD, NORTH
Rochester, New York

Compliments of

ACKERMAN'S HOTEL

COR. LYELL AND HOWARD ROAD

Compliments of

PAULINE MOORE'S

CANDIES

T A X I

MONROE 6450

SOUTH SIDE CAB

BULLOCK & SHEPPARD

PRINTERS
WEDDING INVITATIONS

Main 4559
44 ALLEN STREET

NEIL P. COLLINS

CIGARS AND TOBACCOS
SANDWICH BAR

43½ EAST MAIN STREET

Phone, Main 7817 Rochester, N. Y.

GEORGE F. STEGER

for

CHOICE MEATS
456 MAPLE STREET

Phone: Glen. 491 Rochester, N. Y.

Compliments of

WILLIAM F. GREINKE

Art Print Shop

ALBERT P. GERLING

LEWIS J. ZWIERLEIN

★ ★ ★

Printed and Engraved

LETTERHEADS, BUSINESS CARDS

ENVELOPES, WEDDING ANNOUNCEMENTS

also

MULTIGRAPHING, MIMEOGRAPHING, MAILING LISTS

★ ★ ★

Printers of The Lanthorn

★ ★ ★

77 ST. PAUL ST.

Phone STONE 567

170

INDEX

	Page		Page
— A —		— C —	
Ackerman and Klein	162	Culver Herald Engraving Co., Inc.	119
Ackerman's Hotel	169	Curtin Agency, The	141
Agostinelli Dry Goods Store	163	Cutali's Spaghetti Restaurant	139
Albert Flowers	153		
Allen & Son, Ralph A.	159	— D —	
American Specialty Co., The....	138	Dad's Grocery and Delicatessen... ..	157
Amico, J.	162	Dakin, Leonard	150
Anderson & Sons, A. L.	128	Davis Drug Company	167
Andrew's Market, Inc.	167	DeBoer Grocery, A.	158
Angelini, Frank	160	Decker's Dry Goods Store	162
Antczak, J. T.	160	Del-Bar Fuel Service	144
Arnett Shoe Repair	165	Dengler Butter & Egg Co.	138
Arrow Food Market	155	Dennis Stores, Inc., Frank H....	128
Art Print Shop	170	Dewey Flower Shop, The	153
Ashley Co., Egbert F.	152	Dewey Super Market	162
Atlantic Stamping Company....	133	Dewey Upholstering & Furn. Co.	143
		DiPaolo Baking Company....	133
— B —		DiPasquale Shoes	158
Balcron Coal Co., Inc.	132	Dodd, Leo	154
Bale Pin Company	147	Dollar Dry Cleaning Co., Inc.	150
Ball Shoe Repairing	156	Domestic Fuel Service	138
Bamann, Arthur J.	168	Donovan, Mortimer	138
Barba, T. A.	156	Donut Center	160
Bareis and Son, G.	168	Dream-Steaks	147
Barker, Vincent F.	141	Dwyer Electric Company	130
Bauman & Baynes	149		
Bauman and Son, Ed.	164	— E —	
Beaucaire, Inc.	142	Eddy Beauty Shop	158
Beckwith's	164	Eggleston, The	137
Ben's Cut Rate Drugs	166	Ehmann's Market	161
Benzoni, Herbert "Rip"	145	Eiffert and Fisher	141
Blackwood, John M.	150	Eisenmenger's Grocery	160
Blanchard Florist	152	Emerson Fuel Co.	140
Bo Cinder Sales	161	Empire Pharmacy	167
Bodner's Tobacco Co.	166	Empire Textile Weavers	163
Bonacci, George	163		
Bonadio's Food Store	168	— F —	
Bond Bakers	148	Fairfax Beauty Salon	167
Boscul Coffee	144	Farmen Flowers	148
Boucher	154	Farrell Brothers	140
B. P. D.	155	Farrell's Drug Store	164
Brennan, George E.	145	Ferrara, Joseph	164
Brick, James E.	165	Filmar Florist	146
Brighton Radio & Electric Co....	169	Filmar Florist Shoppe, The	158
Brockmann's Sons, Edw.	159	Filippone Brothers	143
Bromley, E. J.	154	Fischer, Dr. and Mrs. Vincent E.	164
Brown Market, Joseph J.	168	Flannery, B. T.	139
Buckley, Joseph J.	148	Flesch & Schmitt, Inc.	123
Bullock & Sheppard	169	Florence's Beauty Salon	164
Bungalow Beauty Parlor	167	Frances Dress Shop, The	156
Burns, Francis E.	169	Frenchman and Sweet, Inc.	166
Burns, Monsignor	162	Fromm Bros.	156
		Front Street, No. 16	129
— C —		Furlong Studio	125
Camelio Bros.	165		
Casper Coal Co.	162	— G —	
Catholic Courier	125	Gaffney, Jane and	
Cecelia Beauty Shop	163	Geraldine, Father of	167
Champion Knitwear Co., Inc.	153	Gaissert, F.	164
Charlotte Appliances	155	Garnham, John H.	147
Charlotte Liquor Store	162	Garvey Furniture Store	164
Chet's Donut Shop	155	Genesee Bootery	158
Christoff, Kosta	160	Gessner, Henry	162
City Typewriter	130	Giordano, Bartolomeo	140
Clancy, George M.	156	Girl Scouts of Holy Family	157
Clark Carting Co., E. T.	161	Goodie Shoppes, The	164
Clark, Edward R.	138	Gottry and Son, Frank S.	157
Collins, Neil P.	169	Guistino, Leonard A.	155
Collum Acoustical Co., Inc.	123	Gulvin, William S.	158
Comac Builder's Supply Corp....	130	Green Electric Co., T. H.	137
Connor, L. V.	161	Green Spot Fruits - Ades	131
Continental Baking Co.	155	Greinke, William F.	169
Coon Co., W. B.	137		
Corona Home Furnishings	166	— H —	
Covill, D. E.	159	Hadlock Paint Co., Inc.	150
Cramer Drug Stores	150	Hafner Home Laundry Inc.	144
Crescent Puritan Laundry Inc....	148	Halloran and Sons, Henry D.	150
Crosby Frisian Fur Co.	153	Hanna, John R.	155
Culhane Dress Shop, Ann	153		

INDEX

— M —	Page	— P —	Page
Mac's Sweet Shoppe	161	Potter's Red and White	163
Mahoney, King	143	Predmore, William F.	132
Maid's Nose Spray	157	Prince Furniture Co.	163
Maier, August M., Funeral Home	161	Profetta Funeral Home	145
Maier's Sons, L. W.	143	Projansky	152
Maloy, William J.	158	Putzig, A. W.	143
Manhattan Restaurant	149	Pure Quill	145
Manhattan Wine & Liquor Co.	165		
Maple Cleaners & Dyers Inc.	162	— Q —	
Marcello, Samuel	160	Quinlan, Frank M.	127
Marchner, George J.	139	— R —	
Marchner, M. Betty	163	Rays Lunch	165
Marks & Abramson	155	Red & White Food Store	142
Marriott's French Dry Cleaners	165	Red & White Food Store	130
Mary's Linen Shop	144	Reliable Coal Co.	167
Masline Radio Parts	134	Renzi Studio	163
Mattle, John W.	149	Ribstein, Joseph F.	161
May Furniture Co., Frank P.	157	Ricciardo, Alphonso	140
May, Martin T.	149	Rickard Hardware	166
Mead & Sons, Inc., Chas. P.	145	Ridgeway Pharmacy	159
Mehr, Doctor S. W.	161	Riedman, Frank J.	154
Menges, The William C.	157	Ring Fuel Co.	165
Merriman, Robert, D. D. S.	165	Ritz, The	148
Midnight, Louis M.	168	Rochester Book Bindery	124
Miller, Ben	158	Rochester Business Institute	136
Miller Brothers	142	Rochester Chair Rental Co.	166
Miller, Louis	154	Rochester Costume Co.	144
Miller's Son, N. J.	147	Rochester Gas & Electric	129
Mills, Gregory F.	159	Rochester Packing Co., Inc.	126
Mirguet, Inc., J. C.	168	Rochester Stationery Co.	135
Miss Rochester Frocks, Inc., The	169	Rochester Transit Corporation	129
Modern Shoe Rebuilder, The	160	Rochester Wayne Dist. Corp.	151
Mohican Market and Bakery, The	152	Roncone, Joseph A.	138
Mom's Grocery	160	Rose's Grocery Store	164
Moore's Candies, Pauline	169	Rossiter Employment Bureau, The	159
Moore Liquor Store, Ella	167	Rozzi Tailor and Cleaner	167
Muehleisen Bakery, August	164	Ruby, Joseph M.	158
Muller and Bocco	165	Russer's Market	144
Murray, James T.	167	Ryan Carting Co.	137
		Ryan & McIntee	142
		Ryan and Ryan Inc.	132
— Mc —		— S —	
McCormick, W. A.	143	Sagamore Hotel, The	147
McGowan, James J.	161	Saint Monica's Parish	128
McGrath, George F.	169	Sally Frocks	163
McGrath, Hugh	159	Santan Athletic Club	161
McGuire, Dr. and Mrs. Wm. B.	166	Santillo's Restaurant	155
— N —		Sara Jane Beauty Salon	162
National, The	139	Sargent's Smoke Shop, Joe	151
National Paper Co.	152	Saunders, Donald W.	146
Nazareth College	121	Scanlan and Lane	146
Neisner Brothers	145	Schaefer Co., George C.	134
Newman Florist	168	Schaefer Markets	159
New York Fur Shop	162	Scheuerman Sons, C. F.	140
Niagara University	132	Schmanke's	147
Nusbaum's, Harris	157	School of Commerce, The	136
		Schwab, William C.	138
— O —		Schwab Coal & Oil Co., Inc.	131
O'Brien, Jean Marie, Friend of	136	Schulz Bros.	164
Ockenden's Electrical Store	159	Sealtest Ice Cream	147
O'Connell, Mr. and Mrs. Henry	156	Sears Roebuck & Co.	165
Ontario Biscuit Company	140	Selected Fuel Inc.	166
O'Rourke, Father	133	Seneca Market	164
Owen Service Store, N. E.	134	Senior, A	156
		Senior, A	158
		Senior, A	160
— P —		Seniors, The	122
Paine Drug Co., The	154	Servas, J. B.	159
Palmos, George L.	165	Shabbarrasi Music Store	168
Parker Dry Cleaners	167	Shale, Joseph	136
Parmelee Shoe Shop	167	Shannon Supply Co.	138
Passarell Bros.	156	Ship, The	157
Pauls Curtain Shop	168	Sibley, Lindsay & Curr Co.	142
Paulus, Bert L.	141	Sisters of St. Joseph	120
Pavone's Market and Grocery	161	Skinner, Sheriff Albert	148
Payne and Dunham	151	Skivington, Francis M.	155
Perdue & Company, Inc.	149	Skivington, George J.	155
Perry Flower Shop, The	141	Smalline's Clinton Ridge Phar.	164
Plumeri, Louis C.	160		
Podgurski, Joseph	166		
Poh, Harry J.	165		

Autographs

To the very best of girls. Ruth Shukh

To a swell sports Love Jean Reinhardt

Great wishing you loads and loads of Luck. Dot Blumkett.

To a swell pal and good kilt. Marion Lussel

Good luck in the Latin exam! Helen Chase

Good luck to a very good future Angela Roman

To a swell sport Bernice King

To a top notcher Love & Luck Eleanor Harjden

To a 'just right' girl Marie Head

To a swell kid. Barbara King

you're a swell kid Bernice Senkala

Best of luck to a swell girl who is always in such a hurry in Mary Lower

Best of luck Always to one swell Pal. Edna Cannarella

Best of luck to a smart Latin student. Ann Fitz Gibbon

Just a little remembrance from Eleanor Miller

There's hoping we're in Religion together again next year. I hope I order some with Jeanette

Loads of Luck aff. (we all) Shirley Liebert

I hope & am with you about our Religion with you

Best of luck
to a swell kid
Elaine Reiss

To a cute little kid
with blue eyes.
Lucy Schmidt

Autographs

Dear Rene,
You're an all around
gosh and an all around
N. A. Gil. Nazareth super!

Dear Rene,
You have been a
swell friend and scholar
since grammar school.
Keep up the swell work!
Gilda

Best luck
to a remarkable
Latin student
Louise

in my opinion you're tops.

As ever,
Jay Kanha
(Skipper)

Dear Rene,
I hope you had a lot of
great times this year & hope
you'll be in my homework next
year.
Love
Ann

Best of luck always
Mary Margaret '45
Antoinette Branca

To a damn swell
kid. Ann Shankart

Autographs

To girl with all
the jokes! & a swell kid
good luck, best of health,
& best wishes. (Amen)
Louise M. (Wintgard)

Best Wishes
Betty Henrich

To Rene,
You're one of the
very best. Love Cheryl

Lots of luck
To a swell kid
Edna C. Zimmer

Dear Rene
I wish you
success in all
your years at
Nazareth
Dorothy Bartlett

Friend in love
Janet

To a very nice girl
loads of luck
Chlorena Campana

Dear Rene
I wish you
all the luck in the
world and success
Janet Schweitzer

I hope you in my
honor week next year because
you're tops.
Mary Lou Egan

Best luck
to a good kid
Ann Brown '45

Best of luck to a swell
classmate from W.R.S.
and Nazareth
"Jimmy" Howell

Dear Irene,
I think that you're a super dooper
swell kid. You're a swell dancer and
have a good brain. Keep it up kid
You're doing swell.
Love
"Casey"

P.S. How ya doing. May Day.

Best of luck
to a swell kid.
Helen Shatto

Go swell did,
Betty
Gertrude Taylor

To Irene:
A swell girl + a
good sport -
Love Betty
Rosemarie O'Hara

Best wishes - June
Eileen Embury

Best wishes + a
swell girl + a
swell sport -
Love Betty
Rosemarie O'Hara

Loads of
love and
luck, Irene
Joan King

Best of luck in
your 8th year
Always together
Love
Joan King

I hope we can
have some more
fun in the
future. Love
Joan King

Best wishes in
future years
Helen Shatto

Dear Irene,
Although I have only known
you in Latin I hope to see
more of you next year but
I not there
Marianne Lueders

To a swell kid
Jean Marie Wahl

Dear Irene,
Remember me tell the
elephant goes to the trunk
for a clean shirt.
Best of Luck,
Eleanore Gabel

To a swell kid
from Holly Brown
(Eleanore Gabel)

Good luck
to a swell kid
Mary Gray
Mary Gray
Mary Gray

To a swell kid
from Ricker
Joan King

To a swell girl
Mary Gray
Best of luck
to a friend from
grammar school
Helen O'Hill

Best of luck
to a friend from
grammar school
Helen O'Hill

To a swell kid
from Holy Brown
Betty King

To a swell kid
from Holly Brown
(Eleanore Gabel)

To a swell girl
Mary Gray

Dear Irene
you're 100%
swell. I like you.
Love Holland
P.S. Remember W.R.S.
specially the 8th.
Love again
Eleanore Gabel

June 21
1942

Dear friend
I am so pleased to
be able to write a few
lines after reading such
lovely comments about your
wishing you the Best of Luck
for the following year,
Sincerely yours,
Mrs. Faine Robinson

